

Instruction Manual

CVS Series 50 Chemical Injection Pump

Introduction

The CVS Series 50 Chemical Injection Pump is a positive displacement pump that uses a molded diaphragm to drive a piston through packing in the fluid end. The pump capabilities cover a broad range of applications due to the ability to achieve high discharge pressures (up to 12000 psi) and a wide volume range. High operating efficiency is met by the horizontal plunger and vertical valve check arrangement. The standard fluid end is ductile iron with stainless steel trim and plunger. The pump body casting and frame are high strength aluminum to make it light weight. Integrated priming valve enables the operator to easily check operation of the pump. All CVS series 50 chemical injection pump models are furnished with a micro switch that pilots a high volume pneumatic valve. Operating mechanism is gasket sealed to protect from the environmental elements. Safety valve provides for protection on case of accidental overpressure of the main diaphragm. A grease jack for lubricating the plunger and packing ring, along with adjustable packing equipped with lantern ring insure long life.

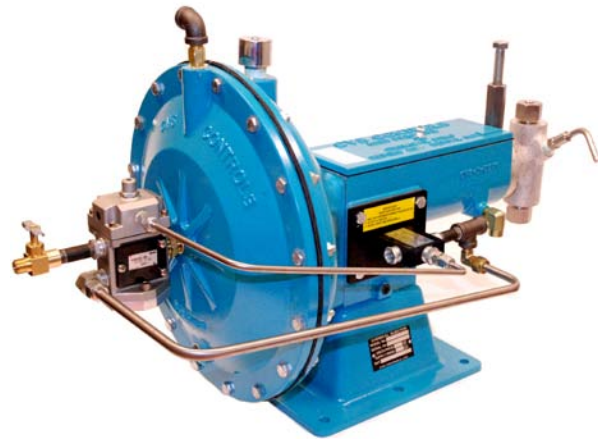


Figure 1: CVS Series 50 Chemical Injection Pump

Applications

- Methanol and alcohol injection in gas systems to prevent freezing
- Water Treatment
- The introduction of De-emulsifiers, corrosion inhibitors, De-scaling agents
- High and low pressure lubrication systems
- High pressure addition of fluid compounds in chemical processing and blending
- Injection of Surfactant (soap) in wells with high water content



Australian Agents
www.globalsupplyline.com.au
sales@globalsupplyline.com.au

Head Office
3900 101 Street
Edmonton, Alberta
T6E 0A5
Canada
Office: (780) 437-3055

CVS
Controls Ltd.

Calgary Sales Office
205,2323 – 32 Avenue
NE Calgary, Alberta
T2E 6Z3
Canada
Office: (403) 250-1416

Installation and Operation

- Upon removing the pump from carton, inspect for possible damaged or missing components from transit from CVS Controls. Contact a CVS controls representative should there be any concerns.
- Blow out and remove potential debris from supply line before hooking up supply air/gas to inlet. Supply pressure should be regulated with a maximum setting of 50 psi.
- Connect suction line to pump head.
- A line check should be installed in the discharge line close to the point of injection. (note the direction of the flow arrow) CVS Controls offers the CVS-B-0283 line check in stainless steel, for all plunger sizes which will withstand a working pressure of 6000 psi.
- Connect the discharge line to the ¼" FNPT in both the line check and the Top Bushing (CVS-A-0152) of the head assembly. Ensure the line is clear of all debris.
- Partially open Bleeder Valve (CVS-A-0123)
- Connect the gas supply line, considering the pressure required of the pump. If the gas exceeds 50 psi, the supply should be equipped with a regulator to reduce the pressure to 50 psi.

Lubrication

A stick lubricator (CVS-A-3179) is inserted into the grease assembly (CVS-A-0558) upon manufacturing. CVS controls has available and recommends CVS-A-3179 for most fluids. No lubrication stick is required if the pump is equipped with Teflon packing and chrome plated plunger.

Operation

1. Remove the body cover (CVS-B-0004) and cover gasket (CVS-B-0036)
2. Open the main air/gas supply valve and slowly open the exhaust valve (CVS-A-2489). The pump should automatically start. Ensure the suction line is primed with fluid, and then test the pump head by opening the Bleeder Valve (CVS-A-0123). The fluid escaping from the bleeder valve may contain bubbles. As soon as the bubbles subside, close the bleeder valve for normal operation.
3. Adjust for desired volume by considering pump speed using the flow control. Consider the position of Brass Adjusting Pin (CVS-A-0035) to adjust stroke.

Operation Continued,

4. Refer to Technical Data for volumes achieved by long and short stroke settings. The pump is assembled with the adjusting pin inserted in the hole of the plunger, nearest the plunger packing gland nut. This is the position of the longest stroke. To shorten stroke place the brass adjusting pin in the other hole.
5. Check the packing gland for leakage. If leakage is occurring, use a flathead screwdriver to tighten the Gland Nut until leak just stops. Do not over tighten the gland nut. This may stall the pump or generate excessive wear on the packing and/ or plunger. Do not adjust packing under pressure.

Note: If low volumes are being pumped, the pump head, fluid discharge line, and all other fittings up to the line check should be thoroughly purged of all air bubbles.

6. Replace cover gasket and body cover, secure with wing screw.

Maintenance and Troubleshooting

- Keep the cover in place and periodically oil the thrust rod.
- Regularly check packing for leaks, tighten or replace as required.

***NOTE: Ensure the plunger packing is not over tightened. This may score the plunger and decrease the lifespan of the packing.**

- CVS chemical pumps used for alcohol or methanol injection must be fitted with Buna-N o-rings. Pumps used for most chemical injection should be fitted with Viton o-rings. The o-rings are located in the Top Check Valve Seat (CVS-B-0368), and the Bottom Check Valve Seat (CVS-B-0698). Refer to manufacturer specifications for elastomer sealing fluid compatibilities.
- If the pump fails to stroke, and air/gas constantly flows from the exhaust, the diaphragm may be ruptured. Disconnect air supply and bleed off pressure. Remove the cover (CVS-C-0001), and inspect main Diaphragm (CVS-B-0010) for rips and tears. Replace as required. See below for diaphragm replacement procedures.

Diaphragm Replacement

***NOTE: If installing new diaphragm, shutoff and disconnect air/gas supply and ensure the pressure has been bled off.**

- Remove Wing Screw (22), Body Cover (26), and Cover Gasket (28)
- Insert a punch or screwdriver into the forward slot of the thrust rod containing the roll pin, this will prevent the rod from shooting out of the body. Pry the thrust rod back and secure by resting the punch/screwdriver at the bottom of the pump body. At this point visually inspect the return spring (6) for damage.

Diaphragm Replacement Continued,

- Remove Connecting Pipe I (1/4" tubing) and Connecting Pipe II (3/8" tubing)
- Remove sixteen 5/16 fasteners (16, 20) that secure the Cover (30) to the Housing (35)
- Lay cover face down and remove two Main Diaphragms (27)

Replace Main Diaphragms as required, reassemble in reverse order that it was disassembled.

Maintenance and Troubleshooting continued,

- If no air/gas venting, check the supply pressure (50 psi max). Erratic changes in pressure may cause the pump to stall.
- If pump stalls in the forward discharge position, shut off the air/gas supply. Check if the packing gland nut is over tightened. Re-adjust packing as required.
- If the pump is running, but not pumping, the injection head could be air locked. Open the priming valve and bleed fluid until no bubbles are present. If still not pumping, the bottom seat of the injection head may have failed and needs replacing.
- A constant fluctuation in down line pressure may indicate a top seat failure of the injection head and needs replacing.

Micro Switch Replacement

If Micro Switch (CVS-MV-004) needs replacement, shutoff air/gas supply ensuring all pressure is bled off. Disconnect supply and output tubing. Remove 5/16 bolts (CVS-A-0143) that secure the micro switch to the pump body. Remove the micro switch with plate (CVS-MV-0014) and separate. Mount a new micro switch to the micro valve switch plate, and secure assembly to body. Ensure the micro switch extension is centered between both trip arms on trip bar assembly.

Technical Data: Performance

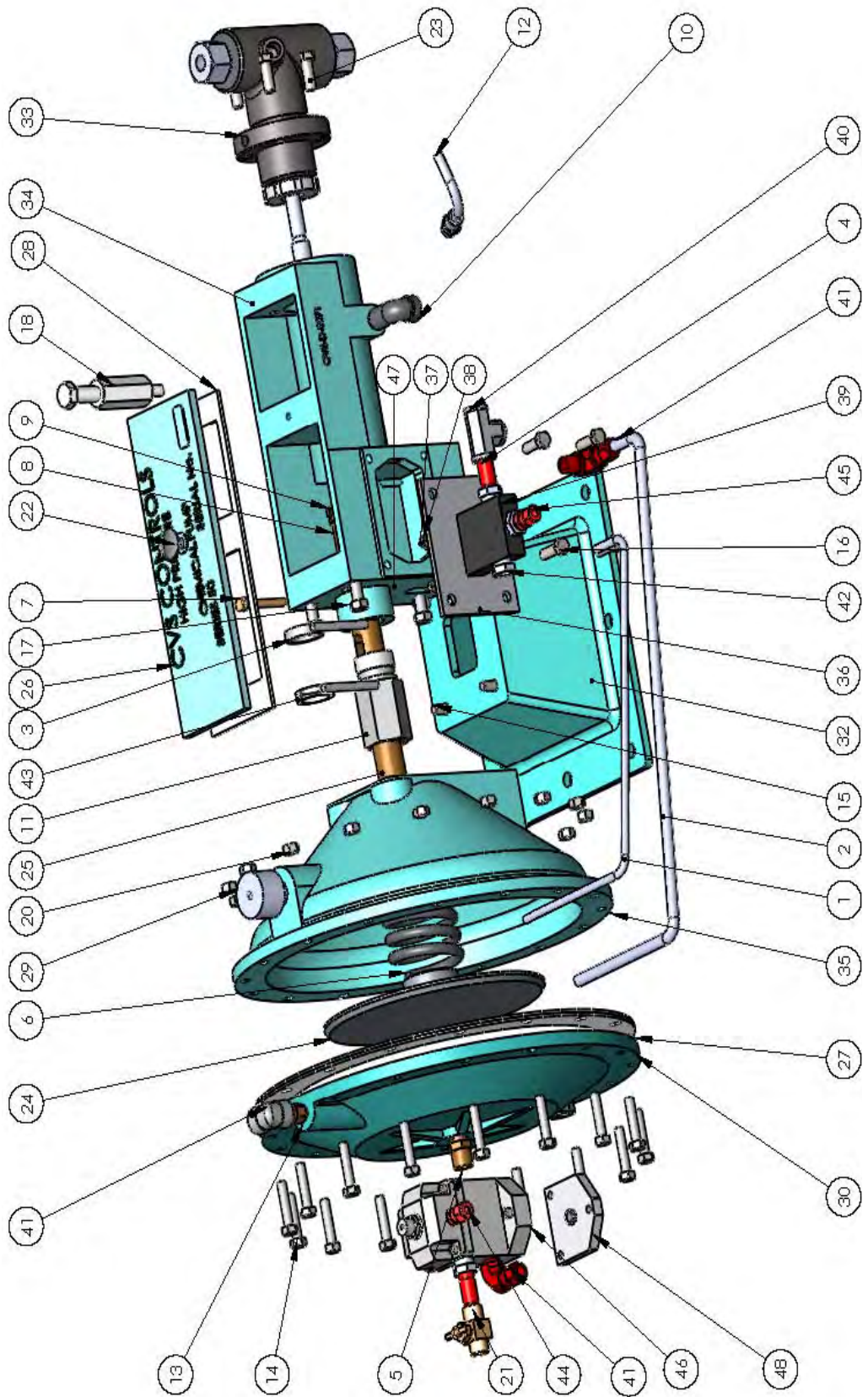
Model Number	Plunger Size	Operating Ratio Gas to Fluid	Maximum Discharge (PSIG)		Maximum Volume		Maximum Volume	
			Soft Packing	Hard Packing	Continuous	Intermittent	Continuous	Intermittent
					GPH	GPD	GPH	GPD
50-14-DMV	1/4	1000:1	3000	12,000	0.67	16	0.83	20
50-38-DMV	3/8	500:1	3000	12,000	1.8	43	2.33	56
50-12-DMV	1/2	265:1	3000	12,000	3.55	85	4.38	105
50-34-DMV	3/4	115:1	3000	5000	6.67	160	7.42	190
50-1-DMV	1	65:1	3000	N/A	13.33	320	16.66	400
50-114-DMV	1-1/4	42:1	2000	N/A	20.83	500	26.04	625
A. Maximum Power Gas Pressure: 50 PSI								
B. Stroke Length: Long-1-1/4", Short- 1/2"								
C. Specify an inlet regulator and gauge when the inlet pressure is over 50 PSI								

Gas Consumption

Gas Consumption Chart (Standard Cubic Feet of gas required to pump one gallon)

Injection Pressure PSI	50	100	150	200	250	300	400	500	600	700	800	900	1000	1500	2000	3000	3500	4000	5000	6000	7000	8000	9000	10000
1/4" Short Stroke	700	703	706	707	709	712	720	724	731	737	740	748	756	779	802	854	872	897	937	984	1017	1057	1090	1122
1/4" Long Stroke	280	281	282	284	285	286	289	292	295	297	300	303	306	318	330	356	368	380	404	428	454	476	500	522
3/8" Short Stroke	355	356	356	357	357	358	360	361	362	364	365	367	368	374	380	393	399	405	417	429	441	453	465	477
3/8" Long Stroke	140	141	141	142	142	143	145	146	147	149	150	152	153	159	165	178	184	190	202	214	226	238	250	262
1/2" Short Stroke	201	201	201	202	203	204	205	206	207	208	210	211	212	218	224	236	242	248	260	272	284	296	308	320
1/2" Long Stroke	81	81.2	81.8	82.4	83	84	85	86	87.2	88.4	90	90.8	92	98	104	116	122	128	140	152	164	176	188	200
3/4" Short Stroke	89	91	92	94	95	96	99	101	105	109	111	113	117	132	145	172	183	190	191					
3/4" Long Stroke	36	37	38	39	40	41	43	45	47.5	49.5	51.5	53	56	66	76.5	97	107	114	212					
1" Short Stroke	51	51.2	52	53	53	54	55	56	57	58.5	59.8	61	62	68	74	86								
1" Long Stroke	20.6	21.2	21.8	22.5	23	23.6	25	26	27.5	28.5	29.6	31	32	38	44	56	62							
1-1/4" Short Stroke	32.6	33.2	33.8	34.5	35	35.6	36.8	38	39.2	40.4	41.6	42.8	44	50	56									
1-1/4" Long Stroke	13.6	14.2	14.8	15.5	16	16.6	17.8	19.2	20.2	21.4	22.6	23.8	25	31	37	49								

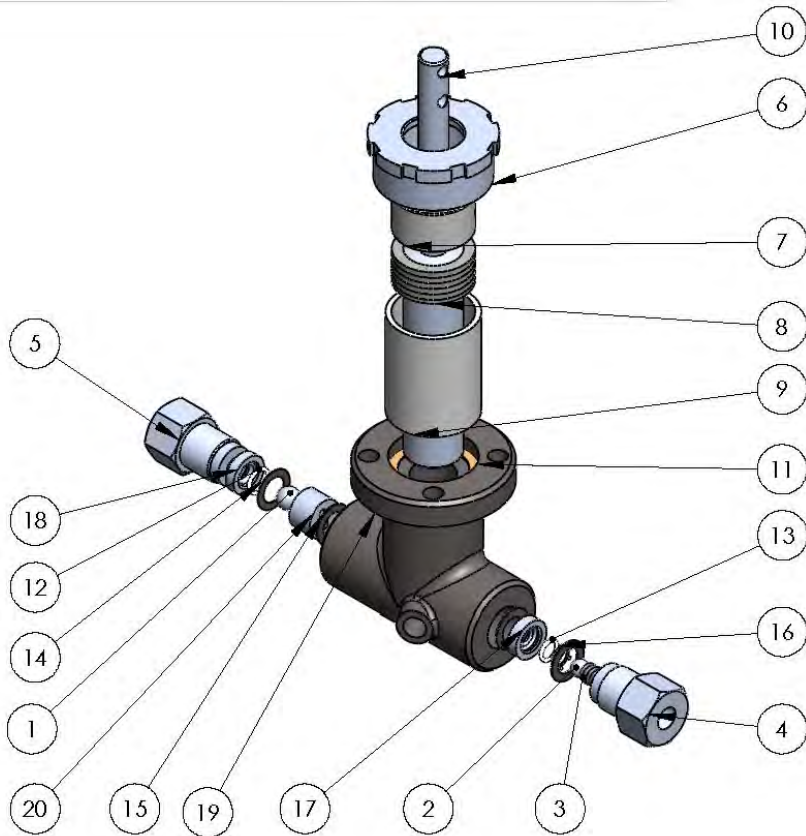
CVS Series 50 Chemical Injection Pump – Assembly



CVS Series 50 Chemical Injection Pump - Parts Listing

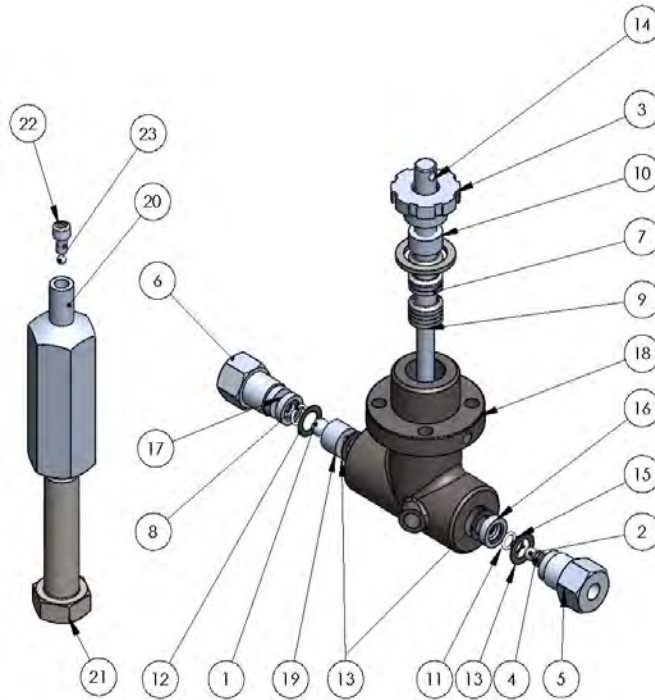
Item Number	Part Number	Description	QTY.
1	1/4" Tube	Connecting Pipe I (1/4" Pipe)	1
2	3/8" Tube	Connecting Pipe II (3/8" Pipe SCH40)	1
3	CVS-50-Trip	Series 50 - Trip Bar Assembly	2
4	CVS-50MV-001	1/4" Nipple 2" Length	2
5	CVS-A-0009	Attachment Nipple (3/8")	1
6	CVS-A-0025	Spring	1
7	CVS-A-0035	Series 50 - Brass Adjusting Pin	1
8	CVS-A-0038	Series 50 - Stuffing Box	1
9	CVS-A-0041	Packing Nut	1
10	CVS-A-0075	90 Degree Elbow (1/4"MX 1/4" F)	1
11	CVS-A-0076	Series 50 - Bushing	1
12	CVS-A-0123	Bleeder Valve	1
13	CVS-A-0131	Safety Valve	1
14	CVS-A-0142	5/16-18UNC Hex Bolt, 1.5" Long	16
15	CVS-A-0143	5/16-18UNC Hex Bolt	4
16	CVS-A-0143	5/16 Bolt	4
17	CVS-A-0143-1	3/8-16UNC Hex Bolt	4
18	CVS-A-0558	Grease Assembly	1
19	CVS-A-1034	1/4" Plug	2
20	CVS-A-139	5/16-18UNC Hex Nut	16
21	CVS-A-2489	Exhaust Valve	1
22	CVS-A-2970	Wing Screw	1
23	CVS-A-4452	3/8" Hex Bolt	4
24	CVS-B-0002	Series 50 - Diaphragm Disc	1
25	CVS-B-0003	Series 50 - Thrust Rod	1
26	CVS-B-0004	Series 50 - Cover Body	1
27	CVS-B-0010	Main Diaphragm	2
28	CVS-B-0036	Cover Gasket	1
29	CVS-BF68.5	Air Filter 1/2" NPT Connection	1
30	CVS-C-0001	Cover	1
31	CVS-C-0001-1	1/4" Elbow	1
32	CVS-C-0004	Series 50 - Base Stand	1
33	CVS-C-0068	Injector Assembly	1
34	CVS-D-0071	Series 50 - Housing, Body	1
35	CVS-D-0434	Series 50 - Housing	1
36	CVS-MV-0014	Micro Valve Switch Plate	1
37	CVS-MV-0014-1	1/4" Hex Bolt	2
38	CVS-MV-0014-2	1/4" Spring Washer	2
39	CVS-MV-004	Micro Switch	1
40	CVS-MV-004-1	1/4" Female Tee	1
41	CVS-MV-006	90 Degree Elbow (1/4"FM X 3/8" T)	2
42	CVS-MV-007	3/8" to 1/4" NPT Reducer	4
43	CVS-MV-013	Socket Setting Screw #10-32	2
44	Male Connector	Male Connector 1/8" NPT (M)X 1/4" T	1
45	Male Connector	Male Connector 1/4" NPT (M)X 1/4" T	1
46	SMC-NVSA3135-03N	Air Valve	1
47	CVS-B-0011	Diaphragm Casing Gasket	1
48	CVS 5000RC001	Regulator Vent Cover	1

CVS Series 50 Chemical injection Pump – 1-1/4" Injector assembly



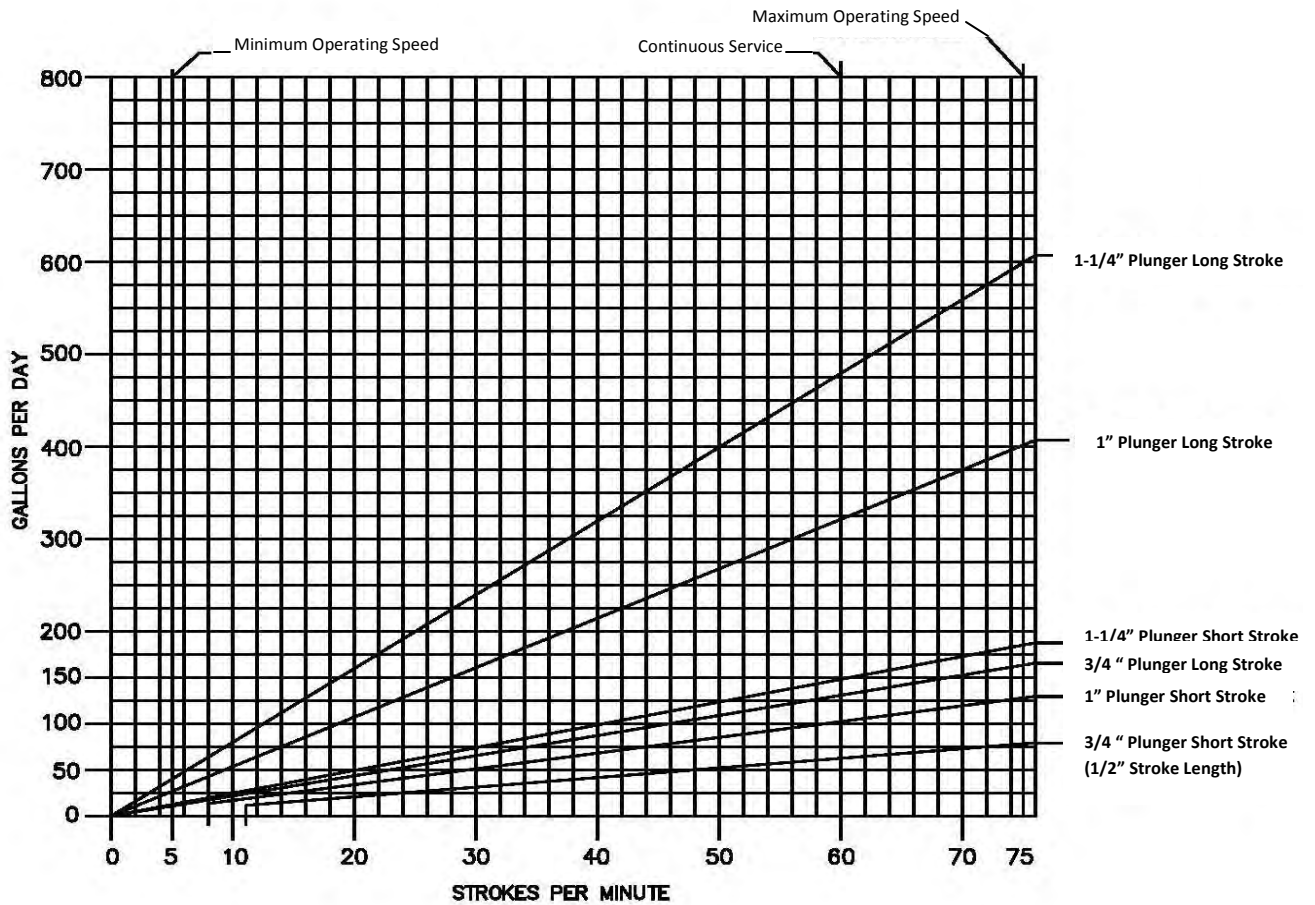
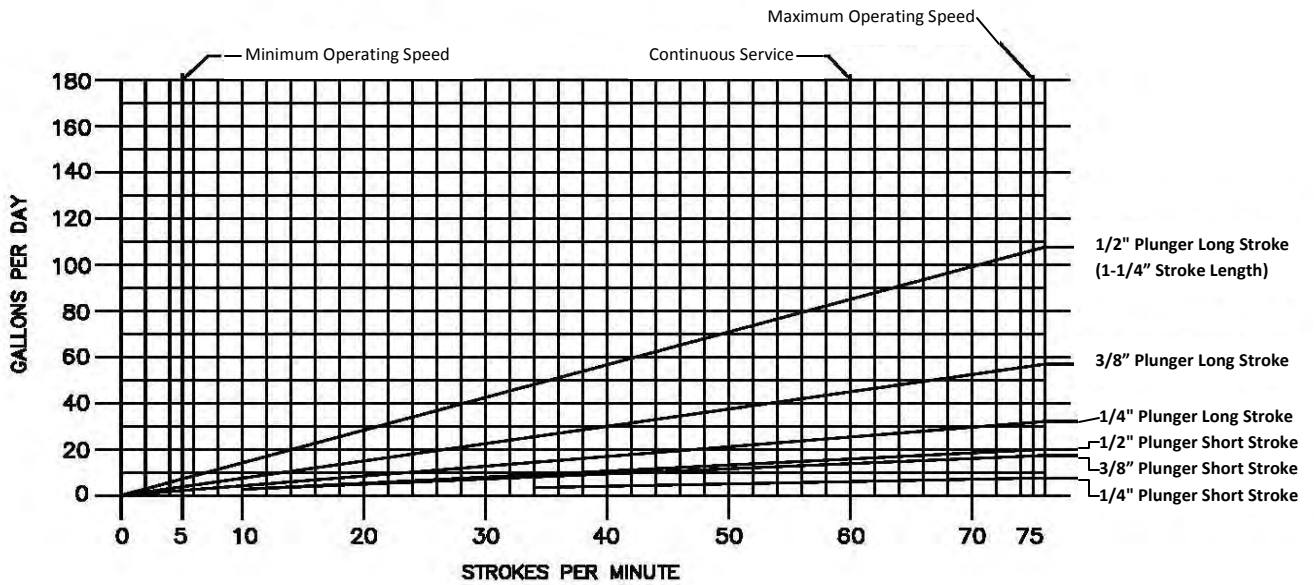
Item Number	Part Number	Description	Qty.
1	CVS-A-0053	Bottom Check Ball 1/2", 316SS	1
2	CVS-A-0054	Top Check Ball 3/8", 316SS	1
3	CVS-A-0077	Check Ball Spring, 316SS	1
4	CVS-A-0152	Series 50 - Top Bushing	1
5	CVS-A-0153	Series 50 - Bottom Bushing	1
6	CVS-A-0403	Series 50 - Packing Nut, 1-1/4"	1
7	CVS-A-0404	Series 50 1-1/4" Plunger Packing Gland	1
8	CVS-A-0405	Packing	1
9	CVS-A-0406	Series 50 - 1-1/4" Adapter	1
10	CVS-A-0408	Series 50 - 1-1/4" Plunger	1
11	CVS-A-0521	Gasket	1
12	CVS-A-0612	Injector Bottom o-ring	1
13	CVS-A-2097	Top o-ring	1
14	CVS-A-2338	Gasket	1
15	CVS-A-2350	Gasket	3
16	CVS-A-3523	Retainer Ring (.39" ID)	1
17	CVS-B-0368	Series 50 - Top Check Valve Seat	1
18	CVS-B-0698	Series 50 - Bottom Check Valve Seat	1
19	CVS-C-0049	Series 50 - Pump Head, 1/2" Stem	1
20	CVS-C-0444	Series 50 - Ball Cage	1

CVS Series 50 Chemical Injection Pump – 1/4" – 1" Plunger Injector and Grease Assembly



Item Number	Part Number	Description	Qty.
1	CVS-A-0053	Bottom Check Ball 1/2", 316SS	1
2	CVS-A-0054	Top Check Ball 3/8", 316SS	1
3	CVS-A-0055	Series 50 - Packing Nut, 1"	1
4	CVS-A-0077	Check Ball Spring, 316SS	1
5	CVS-A-0152	Series 50 - Top Bushing	1
6	CVS-A-0153	Series 50 - Bottom Bushing	1
7	CVS-A-2766	Series 50 - Lantern Ring, 1/4"	1
7a	CVS-A-0742	Series 50 - Lantern Ring, 3/8"	1
7b	CVS-A-0447	Series 50 - Lantern Ring, 1/2"	1
7c	CVS-A-2770	Series 50 - Lantern Ring, 3/4"	1
7d	CVS-A-0448	Series 50 - Lantern Ring, 1"	1
8	CVS-A-0612	Injector Bottom o-ring	1
9	CVS-A-1461	Packing, 1/4" - Buna	1
	CVS-A-1642	Packing, 1/4" - Teflon	1
9a	CVS-A-1456	Packing, 3/8" - Buna	1
	CVS-A-1234	Packing, 3/8" - Teflon	1
9b	CVS-A-0959	Packing, 1/2" - Buna	1
	CVS-A-1012	Packing, 1/2" - Teflon	1
9c	CVS-A-2771	Packing, 3/4" - Buna	1
	CVS-A-2988	Packing, 3/4" - Teflon	1
9d	CVS-A-0050	Packing, 1" - Buna	1
	CVS-A-1013	Packing, 1" - Teflon	1
10	CVS-A-1463	Series 50 - Plunger Packing Gland, 1/4"	1
10a	CVS-A-0957	Series 50 - Plunger Packing Gland, 3/8"	1
10b	CVS-A-1219	Series 50 - Plunger Packing Gland, 1/2"	1
10c	CVS-A-2769	Series 50 - Plunger Packing Gland, 3/4"	1
10d	CVS-A-0043	Series 50 - Plunger Packing Gland, 1"	1
11	CVS-A-2097	Top o-ring	1
12	CVS-A-2338	Gasket	1
13	CVS-A-2350	Gasket	3
14	CVS-A-2764	Series 50 - Plunger, 1/4"	1
14a	CVS-A-0743	Series 50 - Plunger, 3/8"	1
14b	CVS-A-0032	Series 50 - Plunger, 1/2"	1
14c	CVS-A-2767	Series 50 - Plunger, 3/4"	1
14d	CVS-A-0158	Series 50 - Plunger, 1"	1
15	CVS-A-3523	Retainer Ring (.39" ID)	1
16	CVS-B-0368	Series 50 - Top Check Valve Seat	1
17	CVS-B-0368	Series 50 - Bottom Check Valve Seat, 1/4"	1
		Series 50 - Bottom Check Valve Seat, 3/8"	1
17a	CVS-B-0698	Series 50 - Bottom Check Valve Seat, 1/2" - 1"	1
18	CVS-C-1608	Series 50 - Pump Head, 1/4" Stem	1
18a	CVS-C-0084	Series 50 - Pump Head, 3/8" Stem	1
18b	CVS-C-0022	Series 50 - Pump Head, 1/2" Stem	1
18c	CVS-C-0333	Series 50 - Pump Head, 3/4" Stem	1
18d	CVS-C-0020	Series 50 - Pump Head, 1" Stem	1
19	CVS-C-0444	Series 50 - Ball Cage	1
Item Number	Part Number	Description	Qty.
20	CVS-A-0559	Series 50 - Body, Grease Jack	1
21	CVS-A-0560	1/2" Hex Bolt	1
22	CVS-A-0562	Series 50 - Retainer, Grease Jack	1
23	CVS-A-0564	Ball, 316SS	1

CVS Series 50 Chemical Injection Pump – Technical Data: Volume



Notes:

CVS Controls Ltd. strives for the highest levels of quality and accuracy. The information included in this publication is presented for informational purposes only. CVS Controls Ltd. reserves the right to modify or change, and improve design, process, and specifications without written notice. Under no circumstance is the information contained to be interpreted to be a guarantee/warranty with regard to our products or services, applicability or use.

Selection, use and maintenance are the sole responsibility of the end user and purchaser. CVS Controls assumes no liability for the selection use and maintenance of any product.

CVS

Controls Ltd.

Head Office

3900 101 Street
Edmonton, Alberta
T6E 0A5
Canada
Office: (780) 437-3055
Fax: (780) 436 5461

Calgary Sales Office

205, 2323 – 32 Avenue
NE Calgary, Alberta
T2E 6Z3
Canada
Office: (403) 250-1416
Fax: (403) 291-9487

Website: www.cvs-controls.com

Email: info@cvs-controls.com

CVS Series 51 Chemical Injection Pump

Applications

1. The introduction of De-Emulsifiers, corrosion Inhibitors De-scaling Agents, Solvents and Oxygen Scavengers.
2. Water Treatment
3. Methanol Injection in Gas Pipelines.
4. Injection of Surfactant (Soap) into Low Pressure Gas Wells with high water content

Description

The CVS gas driven Series 51 Chemical Injection Pump uses a molded diaphragm to drive a piston through chevron packing making it a positive displacement pump, capable of discharge pressures up to 6000 psig., and maximum volume output up to 30 gallons per day. Unit weight is 22.5 Lbs, shipping weight is 25.5 Lbs

Traegyr Switch: The Traegyr Switch is a miniature valve offering reliability with rugged construction. The unit consists of a 3-way, 2 position valve which is positively switched with pilot signal valves. The valve offers positive response, extremely low cycle times lower than one stroke per minute, and the pump half stroke feature is easily used. This valve will not stick in mid-position causing the pump to stall and cannot be vibrated or jarred out of position. (Figure 1)

Micro Valve: The Micro Valve unit is a miniature valve offering reliability and rugged construction. With an over center, snap action-action operator, the unit consists of a 3-way, 2-position valve. The unit offers sure response, no neutral position, and no varying time lag between positions. Unit maintains either position without holding force, and cannot be vibrated or jarred out of position. (Figure 2)

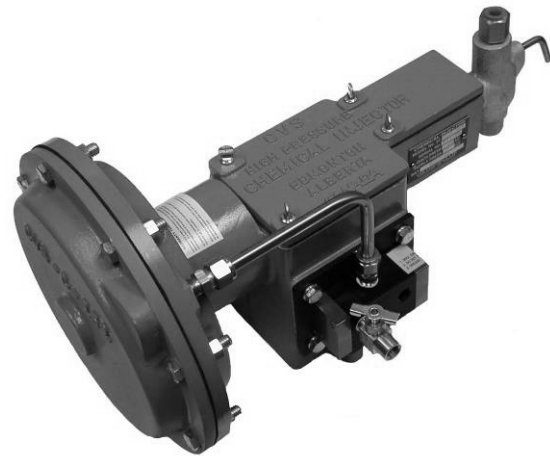


Figure 1: CVS Series 51 Chemical Injection Pump with Traegyr Switch

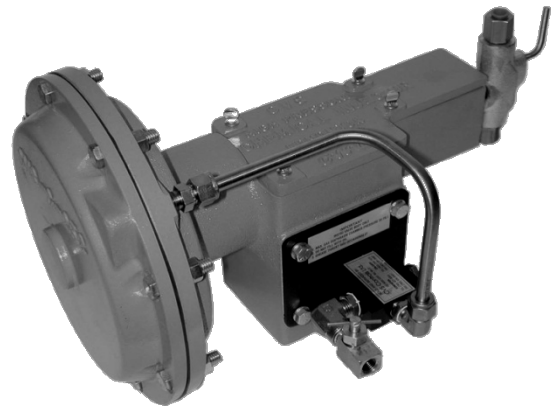


Figure 2: CVS Series 51 Chemical Injection Pump with Micro Valve

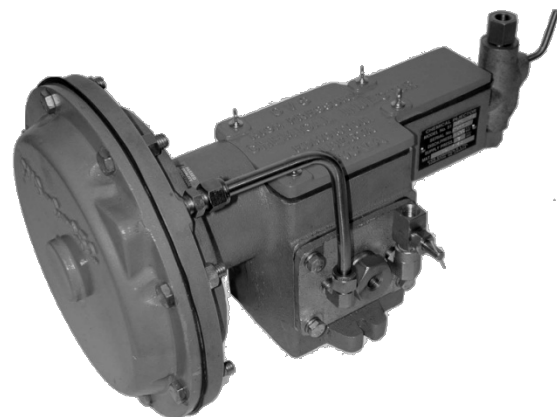


Figure 3: CVS Series 51 Chemical Injection Pump with Pilot Valve

Description, continued

Rotary Switch Pilot Valve: A rotary switch pilot valve (CVS-B-0446) directs the incoming operating gas (35 psi Max) behind the diaphragm (CVS-C-0290) which will cause the pump to stroke forward. The valve in turn shuts off the inlet pressure and opens to expel the spent gas behind the diaphragm and the cycle repeats. (Figure 3)

A choice of three plunger sizes, two stroke lengths and controllable strokes per minute (SPM) with an optional slow speed controller allows for a wide range in capacity, from less than 1 quart to 30 gallons/day.

The oil impregnated bronze bushing (not in contact with the gas supply) extends the thrust rod life as well as protects the pump housing. This combined with the enclosed, prelubed flipper arm bearing ensures continued operation in the event that oil is not added to the reservoir.

The standard fluid end is ductile iron with stainless steel trim and plunger; all stainless steel is an available option.

Installation and Operation

The following components should be shipped loose:

- 1/4" Line Check Valve (One)
Stainless Steel: CVS-A-0675
 - Packing Gland Wrench (One)
CVS-A-0315
1. Blow out and remove debris from supply line before hooking up supply air/gas to inlet. Supply pressure should be regulated with a maximum setting of 35 PSI.

Note

The supply inlet is a 1/4" female connection (Disc Retainer, CVS-A-0906), located at the center of the Pilot Valve (CVS-B-0441). Do not hookup supply air/gas to the small valve; this is the gas exhaust.

2. Install the furnished Line Check (CVS-A-0675) before the injection point (Note: the direction of the flow arrow). Connect the discharge line to the 1/4" FNPT in both the line check and the Top Bushing (CVS-A-1496) of the head assembly. Ensure the line is clear of all foreign debris.
3. Ensure the Priming Valve (CVS-A-1497) is partially open.
4. *Remove the Wing Screws (CVS-A-0136), Top Cover (CVS-B-0548) and Cover Gasket (CVS-A-1546). Fill the reservoir that houses the Flipper Spring (CVS-A-1821) with approximately one and one-half-pints of non-detergent lightweight oil (SAE 5), fill to bottom of Thrust Rod (CVS-B-0444).
5. Open the main air/gas supply valve and slowly open the small gas Exhaust Valve (CVS-A-2489). The pump should automatically start. Ensure the suction line is primed with fluid and then test the pump head by opening the Priming Valve. The fluid escaping from the Priming Valve may contain bubbles, as soon as bubbles subside close the Priming Valve for normal operation. Adjust pump for the desired Strokes/Min. and pumping rate. Be sure to keep hands away from moving parts.
6. Check the Packing Gland for leakage. If leakage is occurring, use the gland wrench supplied to tighten the gland nut until leak just stops. Do not over tighten the Gland Nut. This may stall the pump or generate excessive wear on the packing and/or plunger.
7. Replace Cover Gasket and Top Cover, secure with Wing Screws.

*Note: Step No. 4 pertains to Pilot Valve.

Maintenance and Troubleshooting

- A. Keep the cover in place, and periodically oil the thrust rod.
- B. Regularly check for packing leaks, tighten or replace as required.

Note:

Ensure the plunger packing is not over tightened, as this may score the plunger and decrease the lifespan of the packing.

- C. CVS chemical pumps used for alcohol or methanol injection must be fitted with Fluoro O-rings. Pumps used for most chemical injection applications should be fitted with Viton O-rings. The O-rings are located in the Top Seat (CVS-B-0737) and Bottom Seat (CVS-B-0736). Refer to manufacturer specifications for elastomer sealing fluid compatibilities.
- D. If the pump fails to stroke and air/gas constantly flows from the Air Vent (CVS-A-1836), the diaphragm has ruptured. Disconnect air supply and bleed off pressure. Remove the Diaphragm Cover (CVS-C-0252) and inspect Diaphragm (CVS-C-0290) for rips and tears, replace as required.

Note:

If installing a new diaphragm, shutoff and disconnect air supply and ensure the pressure has been bled off. Remove Lock Nut (CVS-A-3320) and Washer (CVS-A-3321) from the Thrust Rod (CVS-B-0444). To prevent the thrust rod from turning, remove the Top Cover (CVS-B-0548) and insert a punch or drift pin into the large hole forward of the Trip Stirrup Assembly (CVS-B-0471). At this point, visually inspect the Return Spring (CVS-A-1821) for damage.

- E. If no air/gas venting, check the supply pressure (35 PSI Max). Erratic changes in pressure may cause the pump to stall.

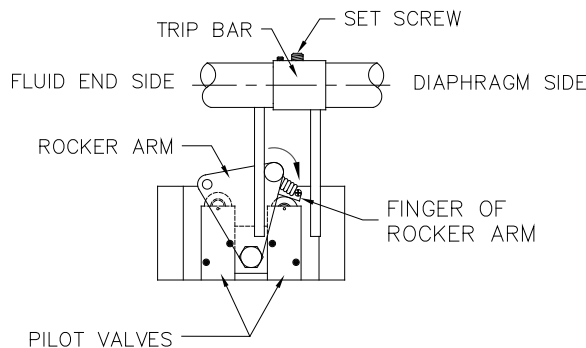
- F. If pump stalls in the forward discharge position, shut off the air/gas supply. First, check if the Flipper Arm Spring (CVS-A-1820) is intact, and then check if the packing gland nut is over tightened. Readjust packing as required.
- G. If the pump is running, but not pumping, the injection head could be air locked. Open the priming valve and bleed fluid until no bubbles are present. If still not pumping, the O-ring in the bottom seat may have failed and needs replacing.
- H. If the Flipper Spring (CVS-A-1820) needs replacement, drain oil into a clean container for later reuse. Shutoff air/gas supply ensuring all pressure is bled off. Remove the Hex Head Machine Screws (CVS-A-0141) and Lock Washers (CVS-A-0425) securing the pilot valve to pump body. Remove the Pilot Valve (CVS-B-0446) and slide the Spring Adapter (CVS-A-1838) off flipper arm and Bearing Assembly (CVS-B-0440). Loosen Hex Head Screw (CVS-A-1829), rotate Stirrup Assembly (CVS-A-1832), and unscrew the flipper spring from Top Spring Adapter (CVS-A-1838). Replace the flipper spring, slide the pilot valve assembly partially in and reassemble the bottom spring adapter. Secure the pilot valve to pump housing, retighten Hex Head Screw (CVS-A-1829) ensuring it is in the groove on the Thrust Rod (CVS-B-0444). Replace oil and restart pump (See steps 6 & 7 under Installation and Operation).
- I. If micro valve needs replacement, shutoff air/gas supply ensuring all pressure is bled off. Disconnect supply and output tubing. Remove the Hex Head Machine Screws (CVS-A-0141) and Lock Washers (CVS-A-0425) that secure the micro valve plate to pump body. Remove the Micro Valve Switch (CVS-MV-004) with plate (CVS-MV-014) and separate. Mount a new micro valve switch to micro valve plate and secure assembly to body. Ensure the micro valve extension is centered between both trip arms on trip bar assembly.

Maintenance and Troubleshooting cont'd

- J. If Traegy Switch requires replacement, shut off air/gas supply. Make sure all air/gas has been bled off. Disconnect supply and output tubing. Remove the hex head machine screws (CVS-A-0141) and lock washers (CVS-A-0425) that secure the Traegy valve plate to the pump body. Remove the machines screws that attach the Traegy plate to the Traegy Switch.

Mount a new Traegy switch to the plate and secure assembly to body. Ensure the trip arm is located at the home position (located closest to diaphragm side) see diagram below. Orient the trip bar so the rocker arm is rotated toward the diaphragm side ensuring the bearing of the pilot valve is depressed. Tighten the setscrew on trip bar assembly to lock rocker arm in place. Open the exhaust valve slowly, this will send a signal to the pilot valve and set the trip bar and rocker arm in motion toward the adjacent pilot valve bearing (this puts the switch in a balanced state).

If system pressure is temporarily lost, the trip arm will return to home position BUT because the switch is balanced, when system pressure is restored the trip assembly will be set in motion.



ENSURE ROCKER ARM IS ROTATED TO THE DIAPHRAGM SIDE.
 -SLIDE TRIP BAR INTO PLACE
 -FINGER OF ROCKER ARM MUST DEPRESS BEARING
 -TIGHTEN SET SCREW

HOME POSITION
 TRAEGYR VALVE
 SET UP

Figure 4: Traegy Switching Relay Home Position

Start Up

1. a) If Traegy Valve operated, lightly grease thrust rod.
 b) If Micro Valve operated, lightly grease thrust rod.
 c) If Pilot Valve operated check oil level and lightly grease thrust rod.
2. Ensure all piping and tubing have been properly connected.
3. Determine the number of strokes/min. required to achieve desired injection flowrate (See Technical Data).
4. Open air/gas supply to start unit and adjust to desired strokes/min.
5. Crack open the Priming Valve to ensure pump action and that unit is not airlocked.
 - a). If Traegy Switch does not respond after checking for arilock, you may have to press the pilot bearing located at the home position to initiate the valve (see step J).
6. Inspect packing and connections for leakage.
7. Once unit is left in continuous operation periodically lubricate and check packing and connections for leakage.

CVS Series 51 Chemical Injection Pump with Traegyr Valve

Parts List

Item	Part Number	Qty	Name	Material	Item	Part Number	Qty	Name	Material
1	CVS-C-0252	1	Diaphragm Cover	Aluminum	21	CVS-MV-001	1	Trip Arm	Steel/Cad.
2	CVS-D-0251	1	Housing	Aluminum	22	CVS-MV-002	1	Trip Bar	Steel/Cad.
*3	CVS-C-0290	1	Diaphragm	Buna-N	23	CVS-MV-003	1	Trip Assembly.	Steel/Cad.
	CVS-C-0290/HS	1	Diaphragm	Highly Saturated		24	CVS-C-0275	1	1/4" Injector Head
							CVS-C-0276	1	3/8" Injector Head
4	CVS-A-3321	1	Washer	Hvy Stl Cad Pl		CVS-C-0272	1	1/2" Injector Head	Cast Stl Pl
*5	CVS-A-3320	1	Locknut	Stl. Cad. Pl.	**25	CVS-A-0315	1	Gland Wrench	Steel
*6	CVS-A-1821	1	Return Spring	CS Cad. Pl.	*26	CVS-MV-005	1	Hex Hd. Cap Screw 3/8 x 1/2	Steel
	CVS-A-1821SS			SST					
7	CVS-A-0136	4	Wing Screws	Stl. Cad. Pl.	*27	CVS-A-1828	1	Adjusting Pin	Steel
8	CVS-B-0438	1	Diaphragm Plate	Steel	28	CVS-A-1546	1	Cover Gasket	Buna-N
9	CVS-B-0548	1	Cover	Aluminum	29	CVS-B-0001	1	Bushing	Bronze
10	CVS-B-0444	1	Thrust Rod	Steel	*30	CVS-TV-051010	1	Pneumatic Switching relay	—
11	CVS-TV-014	1	Traegyr Switch Plate	Steel	34	CVS-A-0225	1	Injector head Locknut	Brass
12	CVS-MV-012	1	Set Screw	Steel	35 ^A	CVS-TV-KIT	1	Traegyr Valve Kit	Std./Dry Sour
13	CVS-B-0447	1	Rod Adapter	Steel/Cad Pl.					
*14	CVS-A-0290	1	Pin	Steel					
15	CVS-A-0139	8	Hex Hd. CapScrew	Steel/Cad Pl.					
16	CVS-A-2207	8	Hex Nut	Steel/Cad Pl.					
17	CVS-A-0141	4	Base Screw	C.S. Cad. Pl.					
19	CVS-MV-013	1	Set Screw	Steel					
20	CVS-A-1835	1	Air Vent	Brass					
	CVS-A-1835SS			SST					

- * Recommended Spare Parts
- ** Parts not mounted, packaged with unit

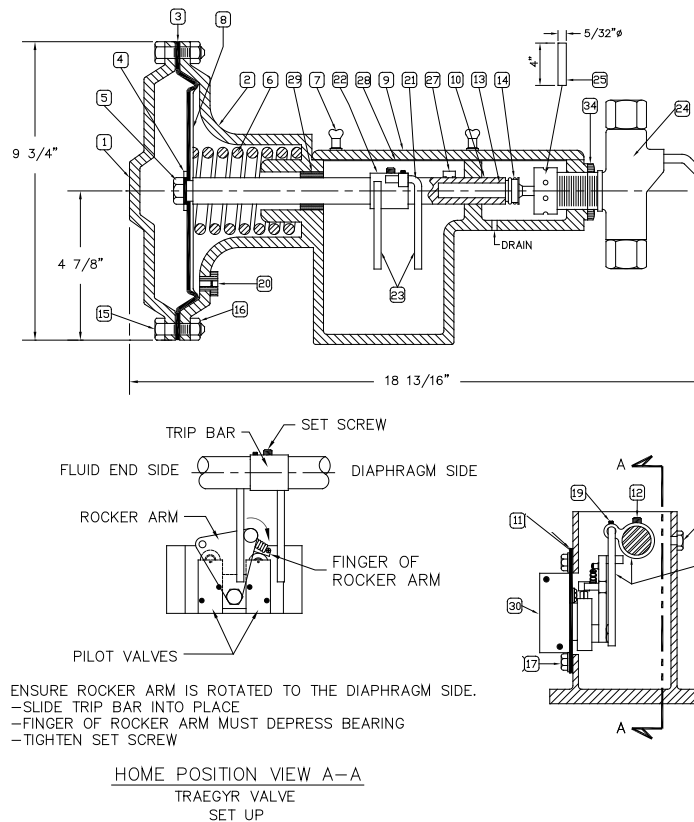


Figure 5: CVS Series 51 Chemical injection Pump with Traegyr Valve

CVS Series 51 Chemical Injection Pump with Traegyr Valve

Item	Part Number	Qty	Name	Material
30	CVS-TV-051010	1	Pneumatic Switching Relay	-----
31	3/8" Tubing	1	3/8" Tubing	SST
32	CVS-A-4015	2	Male Connector	SST
33	CVS-A-2489	1	Exhaust Valve	Pl. Brass
34	CVS-A-0225	1	Injector Head locknut	Brass

NOTE: 1/4" FNPT GAS EXHAUST
 The backpressure on this
 exhaust port must be
 zero psig.

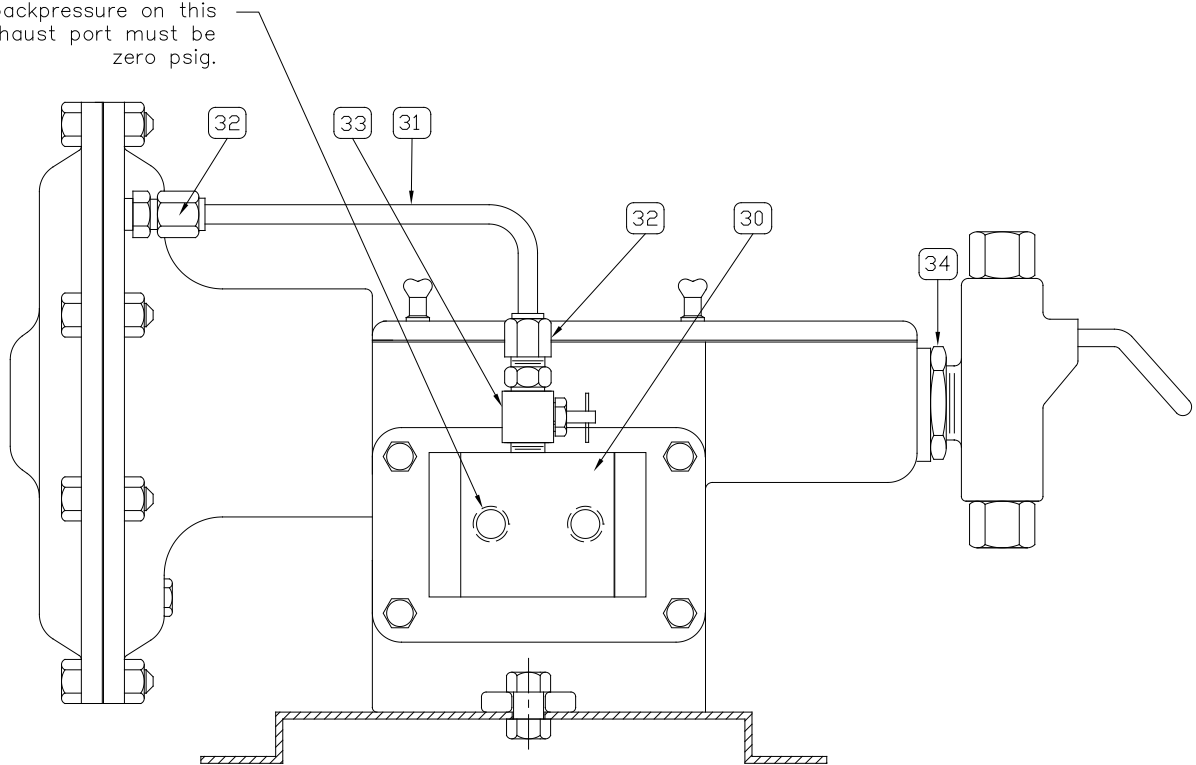


Figure 6: CVS Series 51 Chemical Injection Pump with Traegyr Switch

CVS Series 51 Chemical Injection Pump with Micro Valve

Parts List

Item	Part Number	Qty	Name	Material	Item	Part Number	Qty	Name	Material
1	CVS-C-0252	1	Diaphragm Cover	Aluminum	21	CVS-MV-001	1	Trip Arm	Steel/Cad.
2	CVS-D-0251	1	Housing	Aluminum	22	CVS-MV-002	1	Trip Bar	Steel/Cad.
*3	CVS-C-0290	1	Diaphragm	Buna-N	23	CVS-MV-003	1	Trip Assembly,	Steel/Cad.
	CVS-C-0290/HS	1	Diaphragm	Highly Saturated		24	CVS-C-0275	1	1/4" Injector Head
				CVS-C-0276			1	3/8" Injector Head	Cast Stl Pl
4	CVS-A-3321	1	Washer	Hvy Stl Cad Pl		CVS-C-0272	1	1/2" Injector Head	Cast Stl Pl
*5	CVS-A-3320	1	Locknut	Stl. Cad. Pl.	**25	CVS-A-0315	1	Gland Wrench	Steel
*6	CVS-A-1821	1	Return Spring	CS Cad. Pl.	26	CVS-MV-005	1	Hex Hd. Cap Screw 3/8 x 1/2	Steel
	CVS-A-1821SS			SST					
7	CVS-A-0136	4	Wing Screws	Stl. Cad. Pl.	*28	CVS-A-1828	1	Adjusting Pin	Steel
8	CVS-B-0438	1	Diaphragm Plate	Steel	29	CVS-A-1546	1	Cover Gasket	Buna-N
9	CVS-B-0548	1	Cover	Aluminum	30	CVS-B-0001	1	Bushing	Bronze
10	CVS-B-0444	1	Thrust Rod	Steel	*31	CVS-MV-004	1	Micro Switch	—
11	CVS-MV-014	1	Micro Valve Plate	Steel	38	CVS-A-0225	1	Injector head Locknut	Brass
12	CVS-MV-012	1	Set Screw	Steel	39 ^A	CVS-MV-KIT	1	Micro Valve Conversion Kit	Std.
13	CVS-B-0447	1	Rod Adapter	Steel/Cad Pl.	40 ^A	CVS-MV-KIT-S	1	Micro Valve Conversion Kit	Sour
*14	CVS-A-0290	1	Pin	Steel					
15	CVS-A-0139	8	Hex Hd. CapScrew	Steel/Cad Pl.					
16	CVS-A-2207	8	Hex Nut	Steel/Cad Pl.					
17	CVS-A-0141	4	Base Screw	C.S. Cad. Pl.					
19	CVS-MV-013	1	Set Screw	Steel					
20	CVS-A-1835	1	Air Vent	Brass					
	CVS-A-1835SS			SST					

• A Not Shown
 • * Recommended spare parts.
 • ** Parts not mounted, packaged with unit.

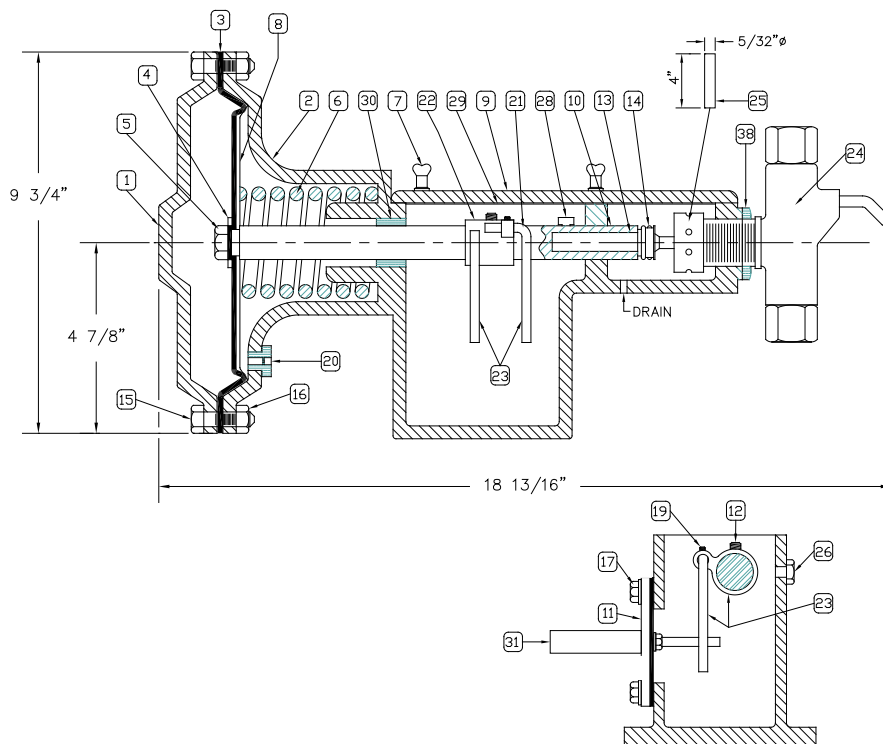


Figure 7: CVS Series 51 Chemical injection Pump with Micro Valve

CVS Series 51 Chemical Injection Pump with Micro Valve

Item	Part Number	Qty	Name	Material
32	CVS-A-1193	1	3/8" Tubing	SST
33	CVS-A-4015	2	Male Connector	C.S. or SST
34	CVS-A-2489	1	Exhaust Valve	Pl. Brass
35	CVS-MV-006	1	Male Elbow	C.S. or SST
36	CVS-MV-007	3	Reducers	Pl. Brass
37	CVS-A-0225	1	Injector Head Locknut	Brass

NOTE: 1/4" FNPT GAS EXHAUST
 The backpressure on this
 exhaust port must be
 zero psig.

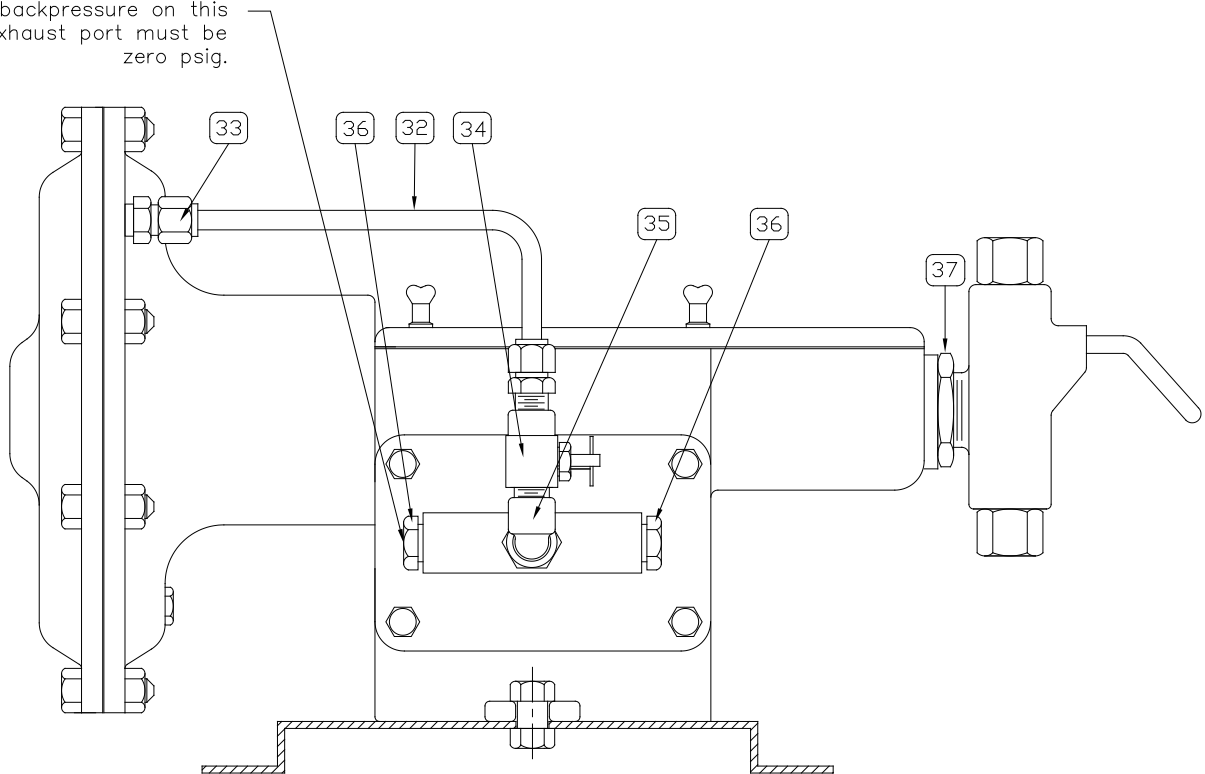


Figure 8: CVS Series 51 Chemical injection Pump with Micro Valve

CVS Series 51 Chemical Injection Pump with Pilot Valve

Parts List

Item	Part Number	Qty	Name	Material	Item	Part Number	Qty	Name	Material
1	CVS-C-0252	1	Diaphragm Cover	Aluminum	20	CVSA-1835	1	Air Vent	Brass
						CVSA-1835-SS			SST
2	CVS-D-0251	1	Housing	Aluminum	21*	CVSA-1820	1	Flipper Spring	Steel
	CVS-C-0290	1	Diaphragm	Buna-N	22*	CVSA-0746	3	Spacer	Steel
3*	CVS-C-0290/HS	1	Diaphragm	Highly Saturated	23	CVSA-1832	1	Stirrup Assembly	Aluminum & Steel
						CVS-C-0275	1	1/4" Injector Head	Cast Stl Pl
4	CVS-A-3321	1	Washer	Hvy. Stl. Cad Pl.		CVS-C-0276	1	3/8" Injector Head	
5	CVS-A-3320	1	Locknut	Stl. Cad. Pl.		CVS-C-0272	1	1/2" Injector Head	
					24				
6*	CVS-A-1821	1	Return Spring	C.S. Cad. Pl.	25**	CVSA-0315	1	Gland Wrench	Steel
	CVS-1821SS			SST					
7	CVS-A-0136	4	Wing Screws	Stl. Cad. Pl.	26*	CVSA-1838	1	Spring Adapter (Bottom)	Steel
8	CVS-B-0438	1	Diaphragm Plate	Steel	27*	CVSA-0058	1	Gasket, Pilot Valve	Fiber
9	CVS-B-0548	1	Cover	Aluminum	28	CVSA-1829	1	Hex Head Screw	Steel
10	CVS-B-0444	1	Thrust Rod	Steel	29	CVSA-3406	1	Int. Tooth Lock Washer	Stl. Cad. Pl.
11	CVS-B-0446	1	Pilot Valve		30	CVS-B-0471	1	Trip Stirrup	Aluminum
12	CVS-A-1823	1	Bumper Plate	Steel	31*	CVSA-1838	1	Spring Adapter (Top)	Steel
13	CVS-B-0447	1	Rod Adapter	Steel	32*	CVSA-2355	1	Roll pin	Steel
14	CVS-A-0290	1	Roll Pin	Steel	33	CVSA-3323	1	Hex Nut	Stl. Cad. Pl.
15	CVS-A-0139	8	Hex Hd. Capscrew	Steel	34	CVSA-1827	1	Bumper Plate Screw	Steel
16	CVSA-2207	8	Hex Nut	Steel	35*	CVSA-1828	1	Adjusting Pin	Steel
17	CVS-A-0141	4	Base Screw	C.S. Cad. Pl.	36	CVSA-1546	1	Cover Gasket	Buna-N
18	CVS-A-0425	4	Lock washer	Cad. Pl.	37	CVS-B-0001	1	Bushing	BRZ
19	CVS-A-0459	1	Lock washer	Cad. Pl.	38	CVSA-0225	1	Injector Head Locknut	Brass

* Recommended spare parts.
 ** Parts not mounted, packaged with unit.

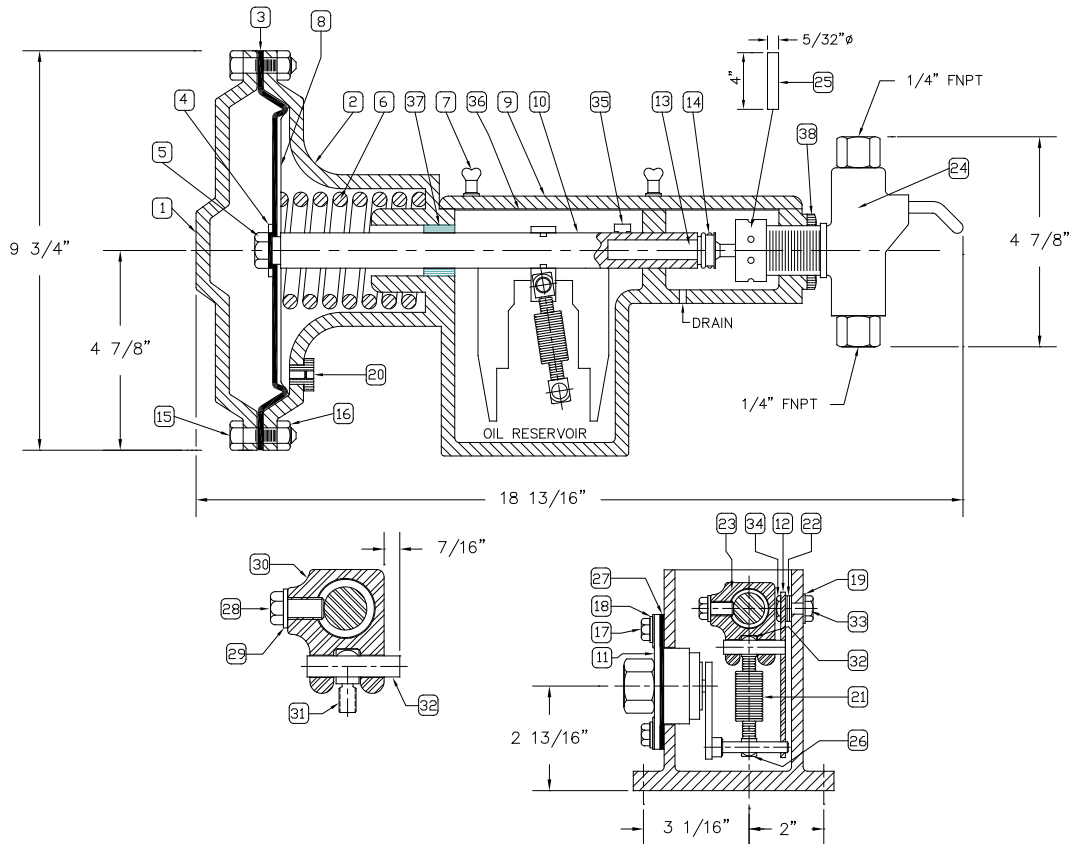


Figure 9: CVS Series 51 Chemical Injection Pump with Pilot Valve

CVS Series 51 Chemical Injection Pump with Pilot Valve

Parts List

Item	Part Number	Qty	Name	Material
1	CVS-A-0950	1	Base	Steel
2	CVS-A-4016	1	Elbow connector & Compression Nut Assembly	C.S. Cadmium Pl.
3	CVS-A-0300	4	Cut Washer	Steel
4	CVS-A-0425	2	Lock Washer	Steel
5	CVS-A-0144	1	Hex. Nut	Steel
6	CVS-A-0142	1	Hex Hd. Cap Screw	Steel Cad. Pl.
7	CVS-A-1193	1	3/8" Tubing	SST
8	CVS-A-2489	1	Exhaust Valve	Ni Plated Brass
9	CVS-A-0075	1	Street Elbow	Pl. Brass
10	CVS-A-4015	1	Male Connector & Compression Nut Assembly	C.S. Cad Plated

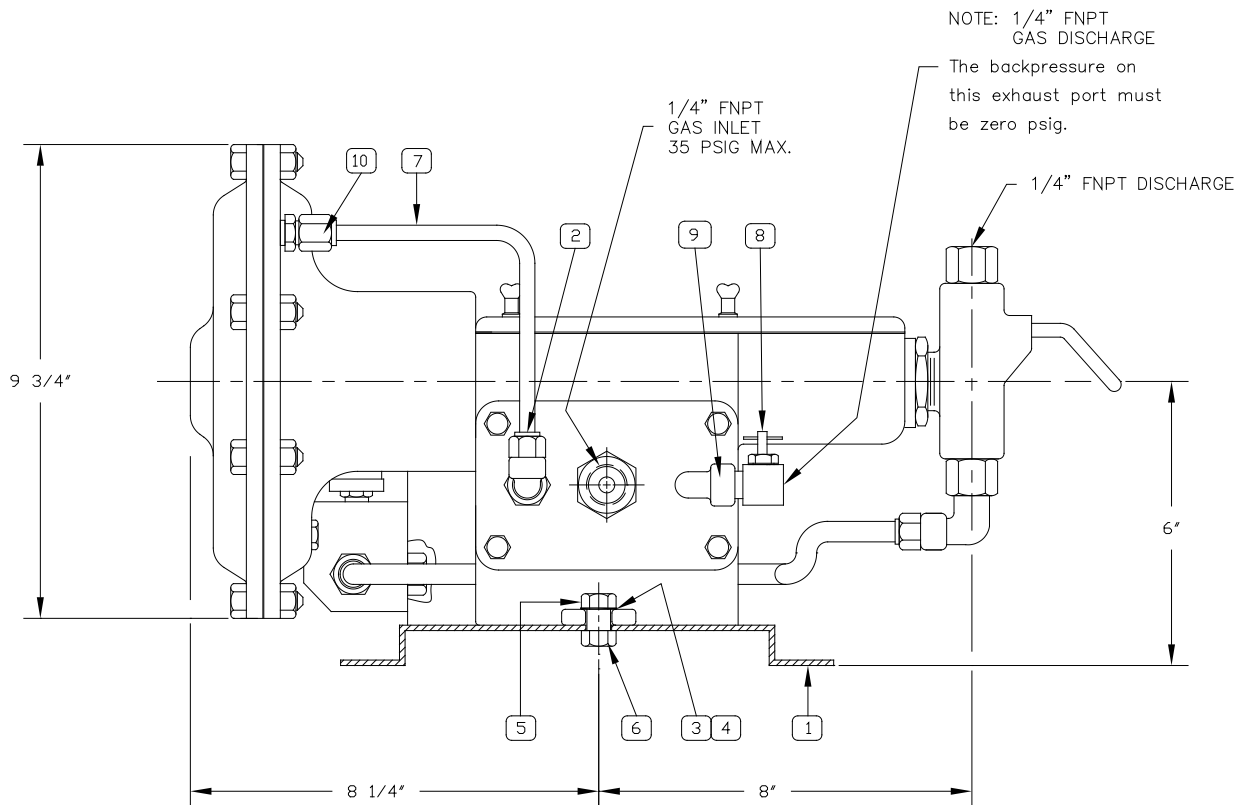


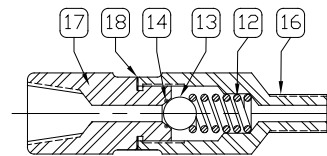
Figure 10: CVS Series 51 Chemical Injection Pump with Pilot Valve

Pilot Valve and Check Valve for CVS Series 51 Chemical Injection Pump

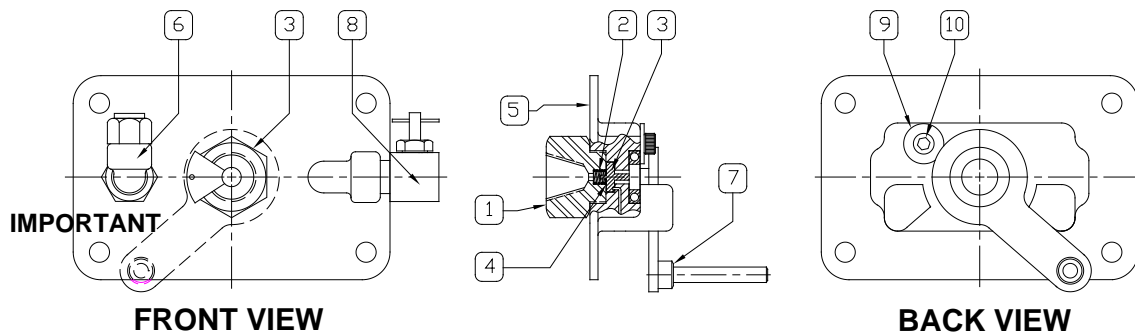
Parts List

Item	Part Number	Qty	Name	Material
1	CVS-A-0906	1	Disc Retainer	C.S. Cad Plated
2	CVS-A-0077	1	Spring	SST
3*	CVS-A-4147	1	Valve Disc and Drive-Pin Assembly	17-4PH SST
	CVS-A-4062	1	Pin Only	Steel Hardened
4*	CVS-A-0579	1	Washer	SST
5	CVS-B-0441	1	Pilot Valve Body	Cast Iron
6	CVS-A-4016	1	Elbow Connector & Compression Nut Assembly	C.S. Cad Plated
7	CVS-B-0440	1	Flipper Arm & Bearing Assembly	17-4PH SST flipper Arm with C.S. Bearing
8	CVS-A-2489	1	Exhaust Valve	Brass, Ni Plated
9	CVS-A-0167	1	Washer	Steel
10	CVS-A-3387	1	Socket Head Capscrew	Steel
12*	CVS-A-0391	1	Spring	SST
13*	CVS-A-0054	1	3/8" Ball	SST
14*	CVS-A-0477/FS	1	O-Ring	Flourosilicone
	CVS-A-0477	1		Viton
	CVS-A-0478	1		Buna-N
16	CVS-A-1296	1	Outlet Body	SST
17	CVS-A-1297	1	Inlet Body	SST
18*	CVS-A-1574	1	Washer	Soft Iron
19*	CVS-C-0451	1	Valve Seat	Steel

* Recommended spare parts.



**CVS-A-0675
303 SS LINE CHECK**



***NOTE:** TO ASSEMBLE, MOVE LEVER ARM TO LEFT AS SHOWN AND ALIGN HOLE IN PILOT VALVE DISC WITH HOLE IN PILOT VALVE BODY.

**CVS-B-0446
PILOT VALVE ASSEMBLY**

Figure 11: Pilot Valve and Check Valve for CVS Series 51 Chemical Injection Pump

Injector Heads for CVS Series 51 Chemical Injection Pump

Parts List

Pump Model Numbers =>			51-316		51-14 Soft Packing		51-38 Soft Packing		51-12 Soft Packing	
ITEM	DESCRIPTION	MAT'L	ALL SST TRIM	DUCTILE W/S.S. TRIM	ALL SST TRIM	DUCTILE W/S.S. TRIM	ALL SST TRIM	DUCTILE W/S.S. TRIM	ALL SST TRIM	
	HEAD ASSY. NO.		CVS-B-1472	CVS-B-0166	CVS-B-0755	CVS-B-0203	CVS-B-0756	CVS-B-0496	CVS-B-0732	
1	Body		CVS-C-2040	CVS-C-0275	CVS-C-0291	CVS-C-0276	CVS-C-0425	CVS-C-0272	CVS-C-0349	
2*	Plunger	17-4PH	CVSA-5643	CVSA-1312	CVSA-1312	CVSA-1745	CVSA-1745	CVSA-1876	CVSA-1876	
	Plunger, Cryo-Treated					CVSA-1745/CT	CVSA-1745/CT			
3	Plunger Packing Gland	303 SST	CVSA-5642	CVSA-1463	CVSA-1463	CVSA-0957	CVSA-0957	CVSA-1219	CVSA-1219	
4*	Plunger Packing** (See table for max. discharge press.)	Buna-N Hard Viton Teflon Flourosilicone	CVSA-3969 CVSA-3948 CVSA-3967 CVSA-3966 CVSA-1461/FS	CVSA-1461 CVSA-2295 CVSA-4102 CVSA-1642 CVSA-1461/FS	CVSA-1461 CVSA-2295 CVSA-4102 CVSA-1642 CVSA-1461/FS	CVSA-1456 CVSA-1875 CVSA-4101 CVSA-1234 CVSA-1456/FS	CVSA-1456 CVSA-1875 CVSA-4101 CVSA-1234 CVSA-1456/FS	CVSA-0959 CVSA-1874 CVSA-4103 CVSA-1012 CVSA-0959/FS	CVSA-0959 CVSA-1874 CVSA-4103 CVSA-1012 CVSA-0959/FS	
5*	O-Ring, Suction & discharge (included in items 9 & 14)	Buna-N Viton Flourosilicone	CVSA-0479 CVSA-2093 CVSA-0479/FS	CVSA-0479 CVSA-2580 CVSA-0479/FS	CVSA-0479 CVSA-2580 CVSA-0479/FS	CVSA-0479 CVSA-2580 CVSA-0479/FS	CVSA-0479 CVSA-2580 CVSA-0479/FS	CVSA-0479 CVSA-2580 CVSA-0479/FS	CVSA-0479 CVSA-2580 CVSA-0479/FS	
6	Top Bushing	302 SST	CVSA-1496	CVSA-1496	CVSA-1496	CVSA-1496	CVSA-1496	CVSA-1496	CVSA-1496	
7*	Spring	316 SST	CVSA-0077	CVSA-0077	CVSA-0077	CVSA-0077	CVSA-0077	CVSA-0077	CVSA-0077	
8*	3/8" SST Ball	316 SST	CVSA-0054	CVSA-0054	CVSA-0054	CVSA-0054	CVSA-0054	CVSA-0054	CVSA-0054	
9*	Top Seat Assy	303 SST	CVS-B-0737	CVS-B-0737	CVS-B-0737	CVS-B-0737	CVS-B-0737	CVS-B-0737	CVS-B-0737	
	Top Seat Assy (Metal to Metal)		-----	CVSA-0806	CVSA-0806	CVSA-0806	CVSA-0806	CVSA-0806	CVSA-0806	
10*	1/4" SST Ball	316 SST	-----	CVSA-0126	CVSA-0126	CVSA-0126	CVSA-0126	CVSA-0126	CVSA-0126	
11	Priming Valve	303 SST	CVSA-5462	CVSA-1497	CVSA-1497	CVSA-1497	CVSA-1497	CVSA-1497	CVSA-1497	
12	Plunger Pkg. Gland Nut	303 SST	CVSA-4104	CVSA-4104	CVSA-4104	CVSA-4104	CVSA-4104	CVSA-4104	CVSA-4104	
13*	Suction Ball - 3/8" Suction Ball - 1/2" (use with CVS-A-0771 metal to metal bottom seat only)	316 SST	CVSA-0054	CVSA-0054	CVSA-0054	CVSA-0054	CVSA-0054	CVSA-0054	CVSA-0054	
			-----	CVSA-0053	CVSA-0053	CVSA-0053	CVSA-0053	CVSA-0053	CVSA-0053	
14*	Bottom Seat Bottom Seat Metal to Metal (use with CVS-A-0053 1/2" ball only)	303 SST	CVS-B-1216	CVS-B-0736	CVS-B-0736	CVS-B-0736	CVS-B-0736	CVS-B-0736	CVS-B-0736	
			-----	CVSA-0771	CVSA-0771	CVSA-0771	CVSA-0771	CVSA-0771	CVSA-0771	
15	Locknut	Brass	CVSA-0225	CVSA-0225	CVSA-0225	CVSA-0225	CVSA-0225	CVSA-0225	CVSA-0225	
16	Gasket	304 SST	CVSA-4394	-----	-----	-----	-----	-----	-----	

* Recommended Spare Parts

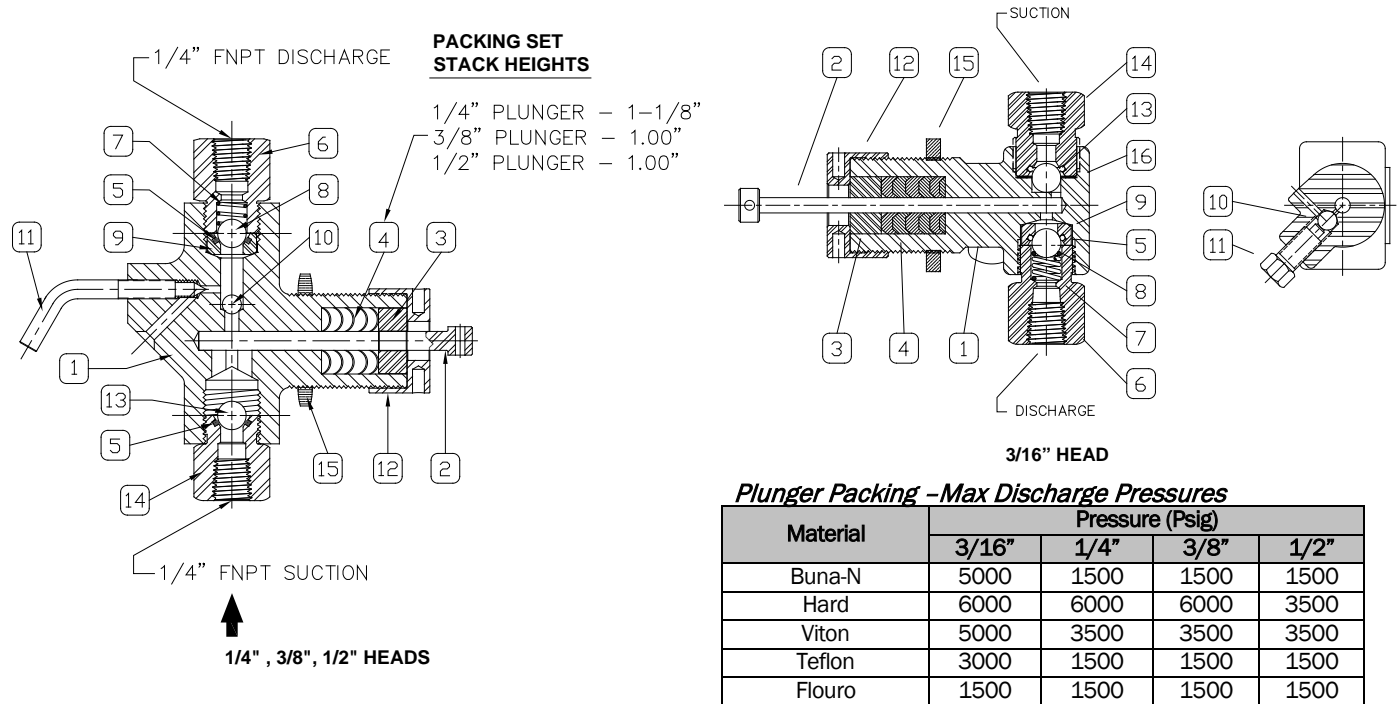
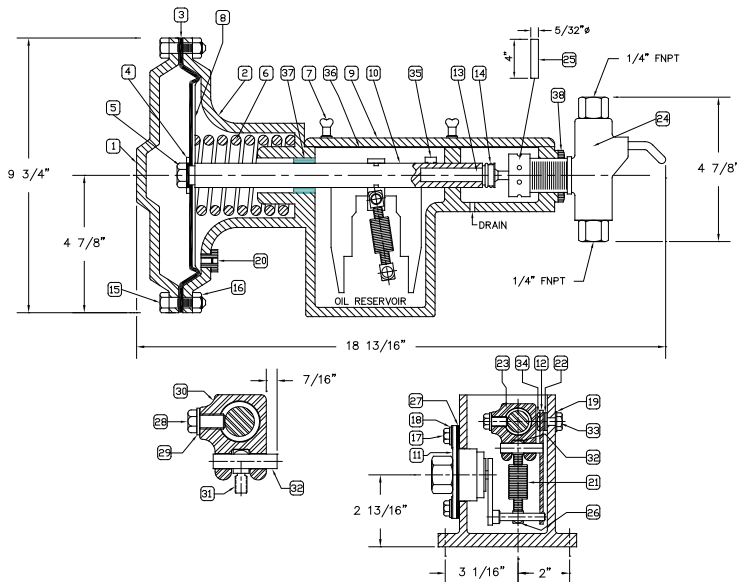
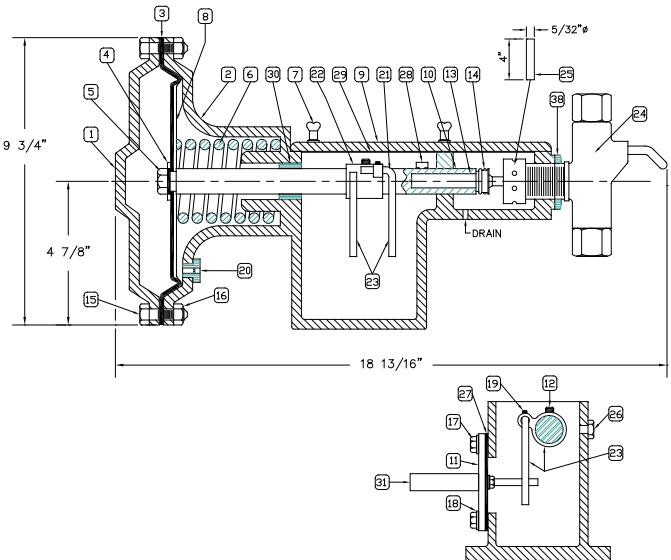


Figure 12: Injector Heads for CVS Series 51 Chemical Injection Pump

CVS Series 51 Chemical Injection Pump, Conversion from Pilot Valve to Micro Valve



Pilot Valve



Micro Valve

Micro Valve Conversion Kit

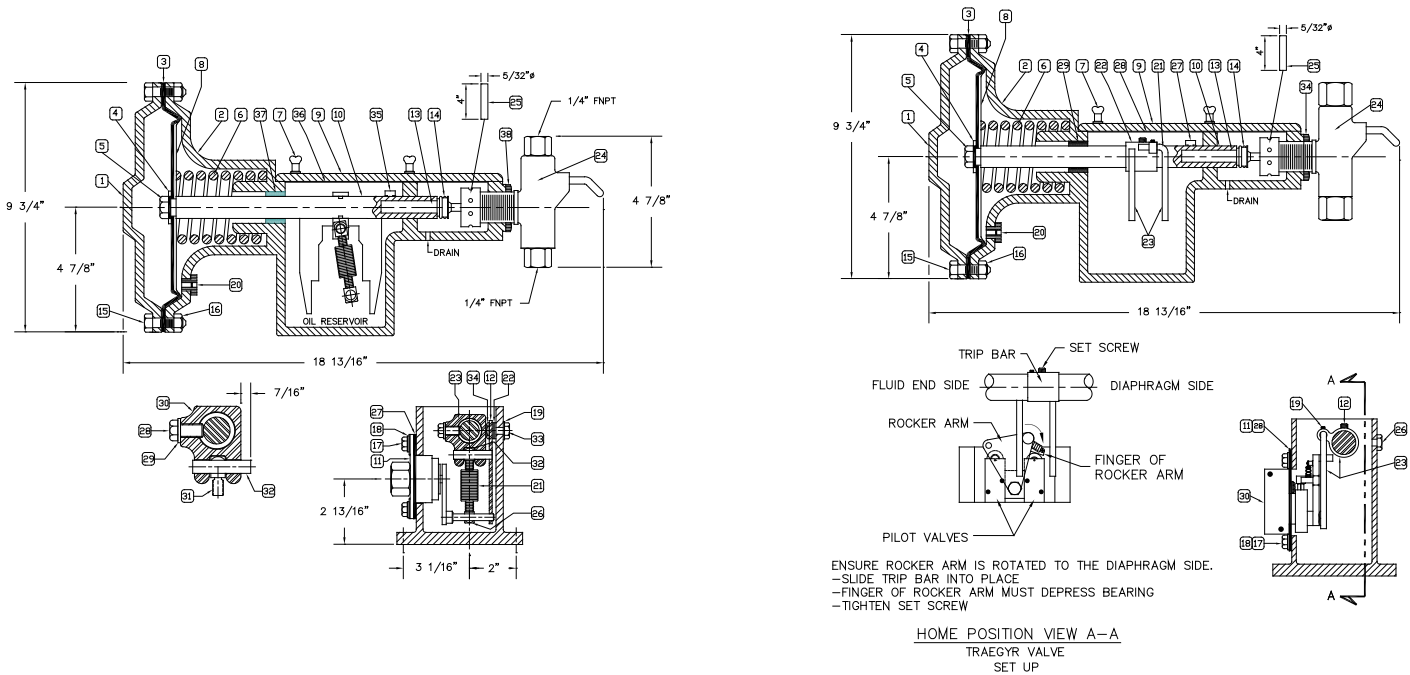
Check for the following shipped components:

- (One) 3/8" SS Tubing, CVS-A-1193
- (One) Trip Assembly, CVS-MV-003
Consists of: Trip Arm, CVS-MV-001 (One); Trip Bar, CVS-MV-002 (One); Set Screw CVS-MV-013 (One) and Set Screw; CVS-MV-012 (One)
- (One) Male Connector, CVS-A-4015
- (One) Micro Switch Assembly
- (One) Male Elbow, CVS-MV-006
Consists of: Micro Switch, CVS-MV-004 (One); Micro Valve Plate, CVS-MV-014 (One); Reducers, CVS-MV-007 (Three); Street Elbow, CVS-A-0075 (One) and Needle Valve, CVS-A-2489 (One)

To convert from Pilot Valve to Micro Valve follow the instructions listed below:

1. Disconnect air/gas supply to pilot and discharge line from head
2. Remove pilot valve assembly (Item, # 11)
3. Remove adjusting pin (Item, #35)
4. Loosen Stirrup Assembly (Item #23)
5. Remove diaphragm cover (Item, #1)
6. Slide out diaphragm and thrust rod assembly (Consists of Items # 3, 4, 5, 8 and 10)
7. Remove stirrup assembly (Item, #23)
8. Remove bumper plate (Item, #12)
9. Install Micro Valve trip bar ^c/_w trip arm (Item, # 23)
10. Re-install diaphragm and thrust rod assembly (Consists of Items # 3, 4, 5, 8 and 10)
11. Re-install diaphragm cover (Item, #1)
12. Tighten set screw on trip bar (Item, #12)
13. Install micro-valve assembly
14. Install fittings and tubing
15. Reconnect discharge line and air supply
16. Re-install adjusting pin (Item, #28)

CVS Series 51 Chemical Injection Pump, Conversion from Pilot Valve to Traegy Switch



Traegy Valve Conversion Kit

Check for the following shipped components:

- (One) 3/8" SS Tubing
- (One) Trip Assembly, CVS-MV-003
Consists of: Trip Arm, CVS-MV-001 (One); Trip Bar, CVS-MV-002 (One); Set Screw CVS-MV-013 (One)
Set Screw; CVS-MV-012 (One)
- (One) Male Tubing Connector, CVS-A-4015
- (One) Traegy Switch Relay
Consists of: (one) Switch Relay, CVS-TV-051010, (One) Traegy Valve Plate, CVS-TV-014
(one) Needle Valve, CVS-A-2489

*****IMPORTANT*****

During setup ensure the trip arm is located at the home position (located closest to the diaphragm side) see above diagram. Make sure the gas/air supply exhaust valve is closed. Note: When switch is new it is unbalanced. Orient the trip bar arm so the rocker arm is rotated to the diaphragm side ensuring the bearing on the pilot valve is fully depressed. Tighten the set screw on the trip bar assembly. Open the exhaust valve slowly, this will send a signal and set arm in motion toward adjacent pilot valve bearing (this puts the switch in a balanced state). If system pressure is temporarily lost, the trip arm will return to the home position. When system pressure is restored the trip arm will be set in motion.

To convert from Pilot Valve to Traegy Valve follow the instructions listed below:

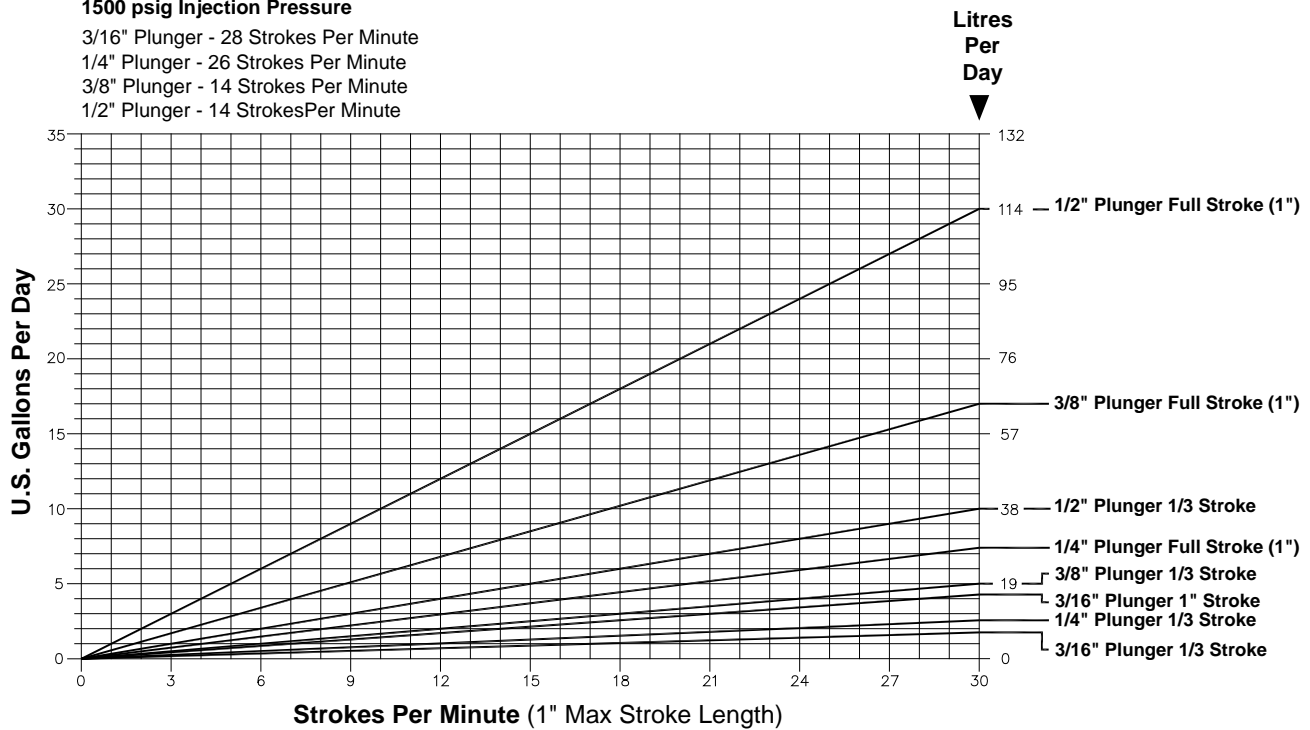
- | | |
|---|--|
| <ol style="list-style-type: none"> 1 Disconnect air/gas supply to pilot and discharge line from head 2 Remove pilot valve assembly (Item, # 11) 3 Remove adjusting pin (Item, #35) 4 Loosen Stirrup Assembly (Item #23) 5 Remove diaphragm cover (Item, #1) 6 Slide out diaphragm and thrust rod assembly 7 Remove stirrup assembly (Item, #23) 8 Remove bumper plate (Item, #12) | <ol style="list-style-type: none"> 9 Install Trip Bar Assembly 10 Re-install diaphragm and thrust rod assembly (Consists of Items # 3, 4, 5, 8 and 10) 11 Re-install diaphragm cover (Item, #1) 12 Tighten set screw on trip bar (Item, #12) 13 Install Traegy switch assembly (#17), see note above 14 Install fittings and tubing 15 Reconnect discharge line and air supply 16 Re-install adjusting pin (Item, #28) |
|---|--|

CVS Series 51 Chemical Injection Pump, Technical Data

Model No.	Plunger Size (Inches)	Max. Discharge Pressure (Psig)	Max. Volume (GPD)	Operation Ratio Fluid/Gas
CVS-51-316	3/16"	1500	4.2	1200/1
CVS-51-14	1/4"	1500	7.5	750/1
CVS-51-38	3/8"	1500	16.8	300/1
CVS-51-12	1/2"	1500	30.0	180/1

Maximum Recommended Speed Above 1500 psig Injection Pressure

3/16" Plunger - 28 Strokes Per Minute
1/4" Plunger - 26 Strokes Per Minute
3/8" Plunger - 14 Strokes Per Minute
1/2" Plunger - 14 Strokes Per Minute



Estimated Gas Consumption (Standard cubic feet of gas required to pump one U.S. gallon) For Inlet regulator sizing, double the requirement indicated.												
Injection Press. In PSIG		100	200	500	1000	1500	2000	3000	3500	4000	5000	6000
3/16" Plunger	1" Stroke	457	458	462	470	475	530	545	555	560	575	589
	1/3" Stroke	1371	1374	1386	1407	1428	1590	1635	1665	1680	1725	1776
1/4" Plunger	1" Stroke	244	245	248	270	288	308	340	1065	369	405	497
	1/3" Stroke	732	735	744	810	864	924	1020	1065	1107	1215	1491
3/8" Plunger	1" Stroke	120	126	148	164	177	185	243	834	314	355	374
	1/3" Stroke	360	378	444	492	531	555	729	834	942	1065	1122
1/2" Plunger	1" Stroke	53	54	57	62	71	76	84	95	----	----	----
	1/3" Stroke	159	162	171	186	213	228	252	285			



Website: www.cvs-controls.com E-Mail: info@cvs-controls.com
Printed in Canada Rev 10, 01/09

Head Office

3900 – 101 Street
Edmonton, Alberta,
Canada T6E 0A5
Office: (780) 437-3055
Fax: (780) 436-5461

Calgary Sales Office

205, 2323 – 32 Avenue NE
Calgary, Alberta,
Canada T2E 6Z3
Office: (403) 250-1416
Fax: (403) 291-9487

Global Supply Line Sole Agents Australia, New Zealand & PNG

www.globalsupplyline.com.au

CVS Controls Ltd. strives for the highest levels of quality and accuracy. The information included in this publication is presented for informational purposes only. CVS Controls Ltd. reserves the right to modify or change, and improve design, process, and specifications without written notice. Under no circumstance is the information contained to be interpreted to be a guarantee/warranty with regard to our products or services, applicability or use. Selection, use and maintenance are the sole responsibility of the end user and purchaser. CVS Controls assumes no liability for the selection use and maintenance of any product.