



PLUG VALVES

*Technical
documentation*

STANDARD PRODUCTION RANGE

LUBRICATED PLUG VALVES

INVERTED TYPE

DN 2" – 24"

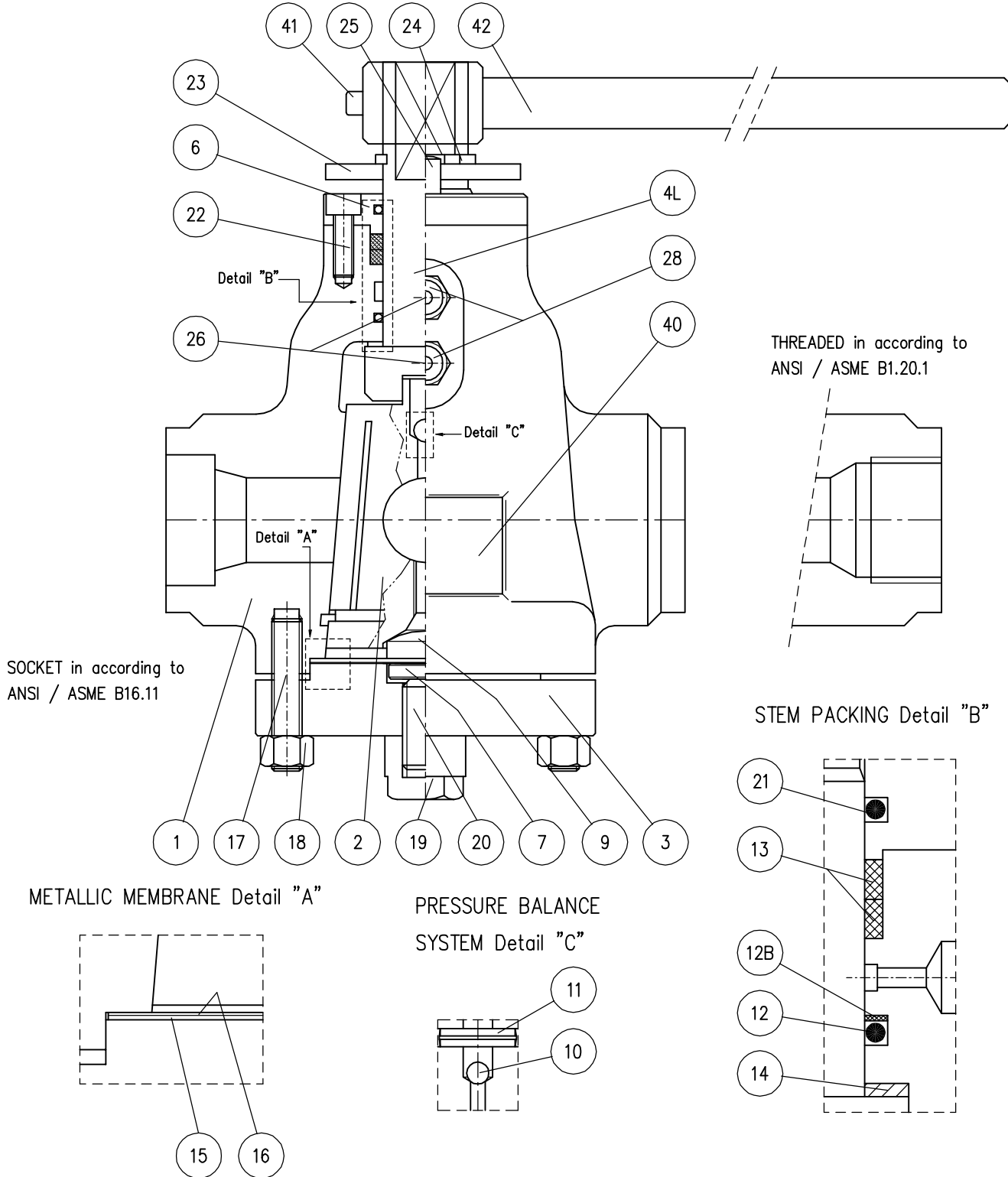
Class 150# - 2500#

API 6D – ISO 14313

REGULAR PATTERN – VENTURI PATTERN





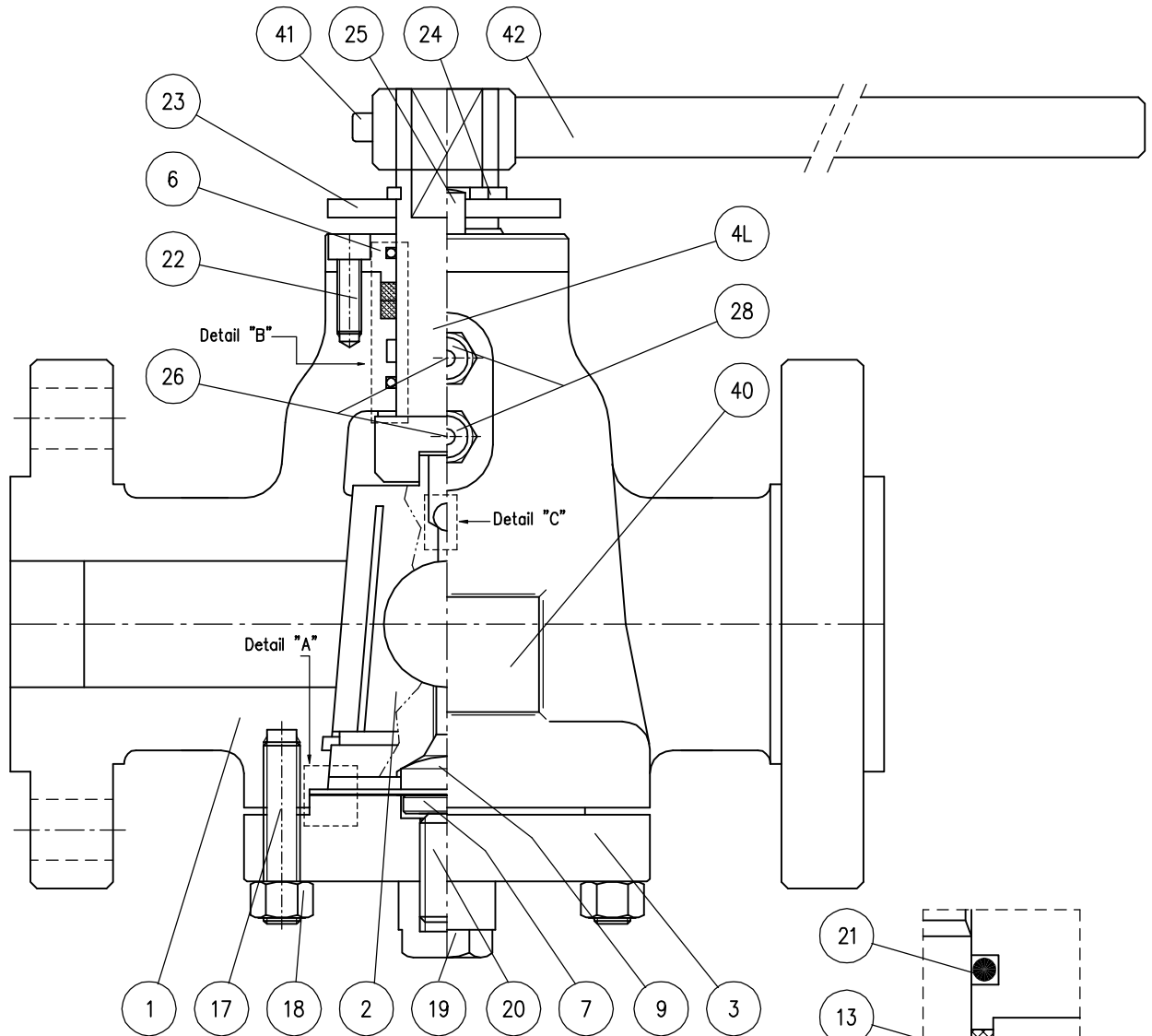


Dwg. N° VM-15406001500

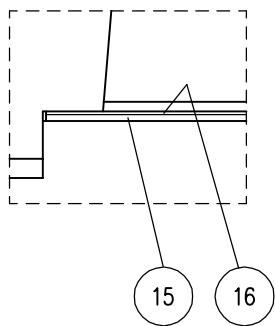
Quote (mm) senza indicazione di tolleranza grado di precisione medio: UNI-EN 22768-1		Dis.	D.R.J.	Date	10.01.09
da 0.5	oltre 6	oltre 30	oltre 120	oltre 400	oltre 1000
fino a 6	fino a 30	fino a 120	fino a 400	fino a 1000	fino a 2000
Toll.±		ALBERI		Toll.±	
±0.1	±0.2	±0.3	±0.5	±0.8	±1.2
Rev.	Dis.	Date	App.	Date	Description

Denomination Lubricated Plug Valve Inverted Type
Dn 1/2"-1.1/2" Class 600 - 1500

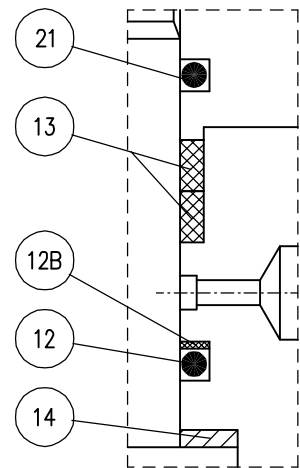
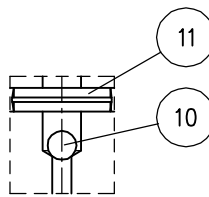
Component ASSEMBLY DRAWING



METALLIC MEMBRANE Detail "A"



PRESSURE BALANCE SYSTEM Detail "C"



STEM PACKING Detail "B"



Dwg. N° VM-15401501500

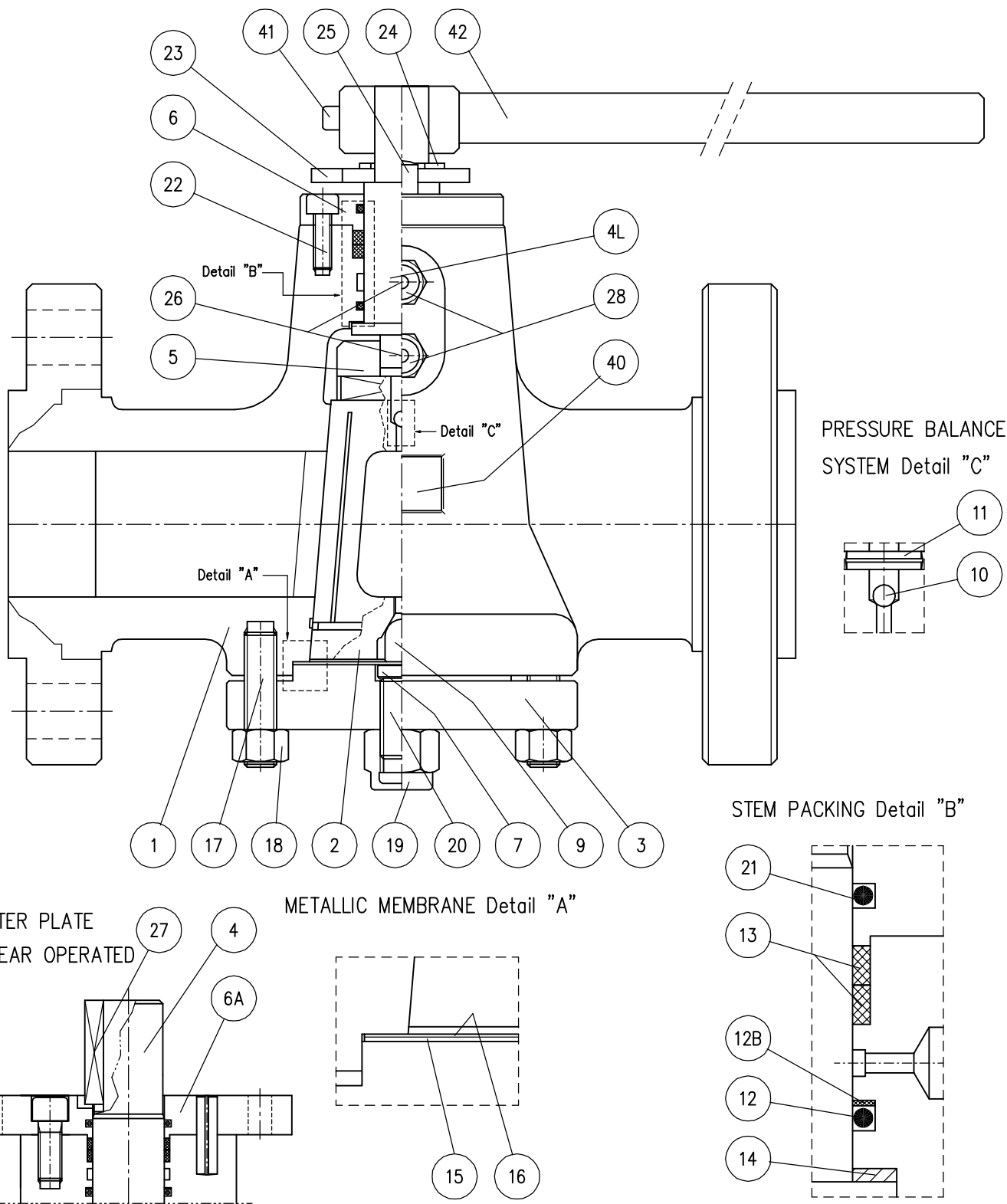
Quote (mm) senza indicazione di tolleranza grado di precisione medio: UNI-EN 22768-1		Dis. D.R.J.	Date 10.01.09
da 0.5	oltre 6	App. D.R.	Date 12.01.09
fino a 6	oltre 30	Draw A3	Scale 1:1
oltre 120	oltre 400	Rev. 0	First Issue
oltre 1000	oltre 2000	Full-Filled PED Requirement	
ALBERI	Toll-		

Denomination Lubricated Plug Valve Inverted Type
Dn 1/2"-1.1/2" Class 150 - 1500

Component ASSEMBLY DRAWING

Rev.	Dis.	Date	App.	Date	Description	Review

Questo disegno è di proprietà di ENERGY VALVES è vietata qualsiasi riproduzione senza autorizzazione



ENERGY VALVES

Dwg. N° VM-241501500

Quote (mm) senza indicazione di tolleranza grado di precisione medio: UNI-EN 22768-1	Dis. D.R.J.	Date 10.01.09
da 0.5 a 6 oltre 6 oltre 30 oltre 120 oltre 400 oltre 1000	App. D.R.	Date 12.01.09
ALBERI Toll.± Toll.±	Draw A3	Scale 1:1
±0.1 ±0.2 ±0.3 ±0.5 ±0.8 ±1.2	Rev. 0	First Issue

Denomination Lubricated Plug Valve Inverted Type
Dn 2"-4" Class 150 - 1500

Component ASSEMBLY DRAWING

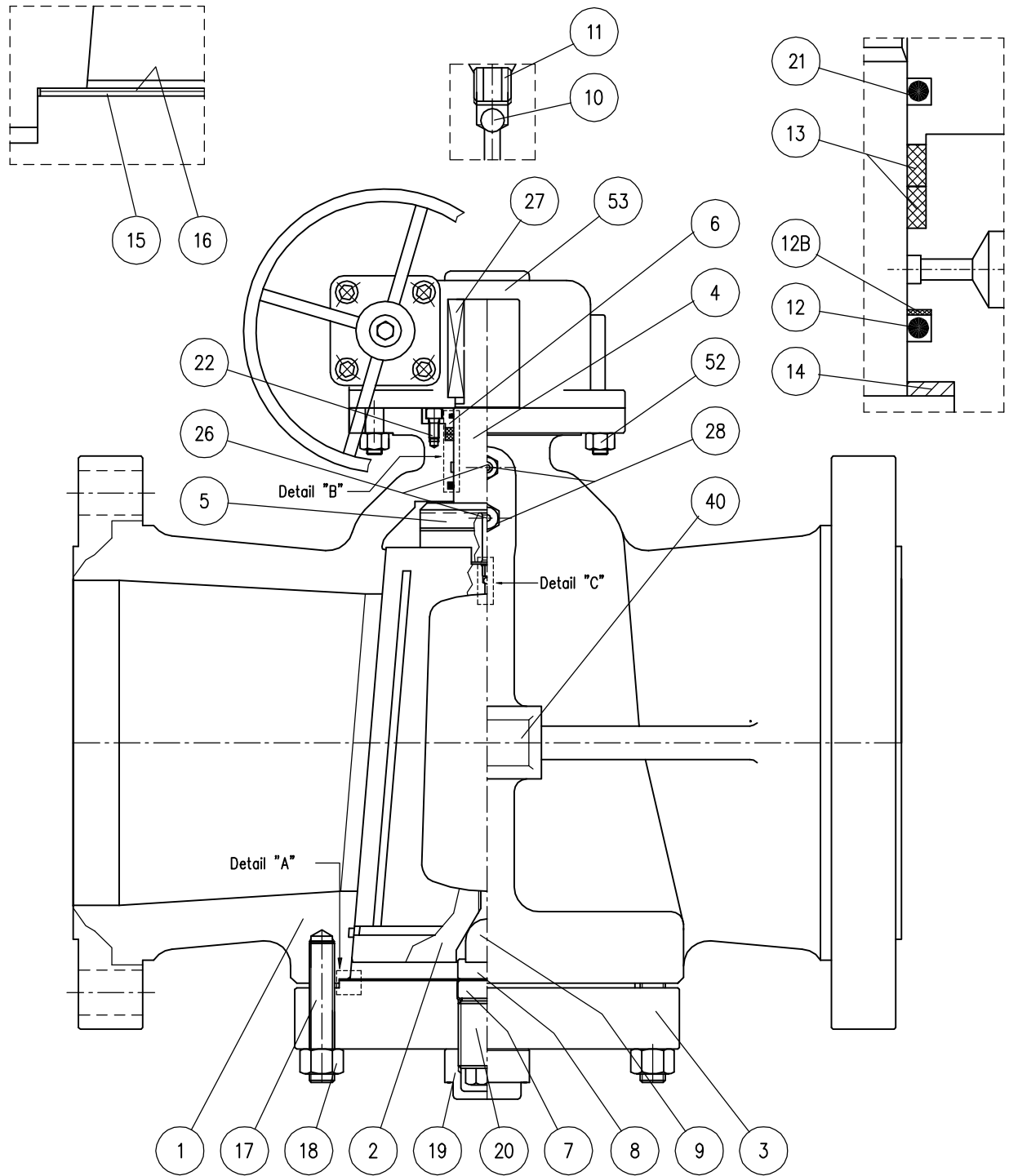
Full-Filled PED Requirement
Rev. Dis. Date App. Date Description Review

Questo disegno è di proprietà di ENERGY VALVES è vietata qualsiasi riproduzione senza autorizzazione

METALLIC MEMBRANE Detail "A"

PRESSURE BALANCE SYSTEM Detail "C"

STEM PACKING Detail "B"



Dwg. N° VM-6121501500

Quote (mm) senza indicazione di tolleranza					
grado di precisione medio: UNI-EN 22768-1					
da	oltre	oltre	oltre	oltre	oltre
0.5	6	30	120	400	1000
fino a	fino a	fino a	fino a	fino a	fino a
6	30	120	400	1000	2000
					ALBERI
±0.1	±0.2	±0.3	±0.5	±0.8	±1.2
					Toll-

Dis. D.R.J. Date 10.01.09

App. D.R. Date 12.01.09

Draw A3 Scale 1:1

Rev. 0 First Issue

Full-Filled PED Requirement

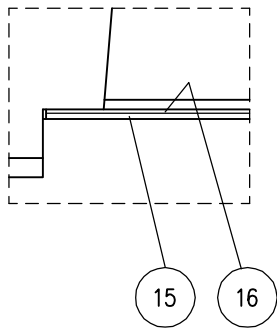
Denomination Lubricated Plug Valve Inverted Type
Dn 6"-12" Class 150 - 1500

Component ASSEMBLY DRAWING

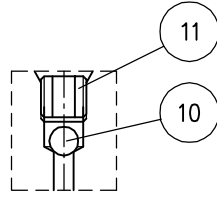
Rev.	Dis.	Date	App.	Date	Description	Review
------	------	------	------	------	-------------	--------

Questo disegno è di proprietà di ENERGY VALVES è vietata qualsiasi riproduzione senza autorizzazione

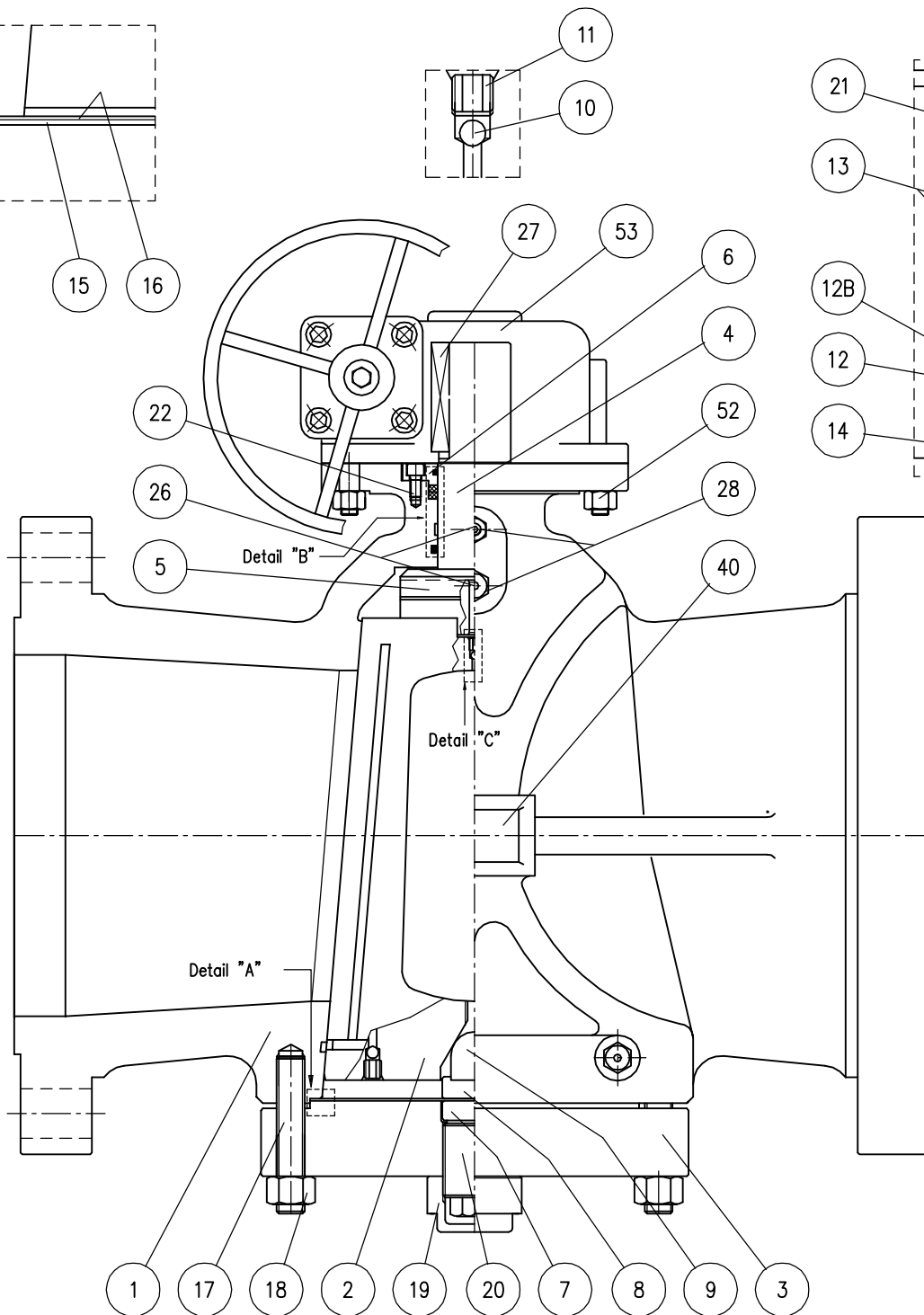
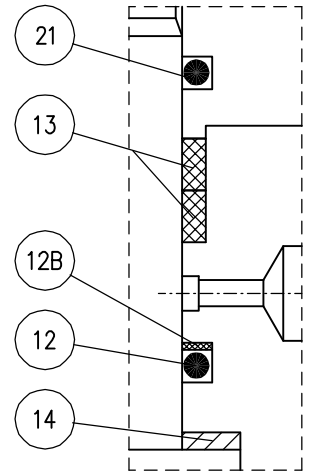
METALLIC MEMBRANE Detail "A"



PRESSURE BALANCE SYSTEM Detail "C"



STEM PACKING Detail "B"



ENERGY VALVES

Dwg. N° VM-1424150600

Quote (mm) senza indicazione di tolleranza
 grado di precisione medio: UNI-EN 22768-1
 da 0.5 a 6 oltre 6 a 30 oltre 30 a 120 oltre 120 a 400 oltre 400 a 1000 oltre 1000 a 2000
 fino a 6 fino a 30 fino a 120 fino a 400 fino a 1000 fino a 2000
 ALBERI
 ±0.1 ±0.2 ±0.3 ±0.5 ±0.8 ±1.2
 Tolleranze

Dis.	D.R.J.	Date	10.01.09
App.	D.R.	Date	12.01.09
Draw	A3	Scale	1:1
Rev.	0	First Issue	
Full-Filled PED Requirement			

Denomination Lubricated Plug Valve Inverted Type
Dn 14"-24" Class 150 - 600

Component ASSEMBLY DRAWING

Rev.	Dis.	Date	App.	Date	Description	Review
------	------	------	------	------	-------------	--------

Questo disegno è di proprietà di ENERGY VALVES è vietata qualsiasi riproduzione senza autorizzazione

BILL OF MATERIALS

SERVICE : TEMPERATURE: -20 °C + 160°C STANDARD FLUID – CARBON STEEL TRIM – FIRE SAFE DESIGN

PART.N°	DESCRIPTION	MATERIAL	NOTE
01	BODY	ASTM A 105	
02	PLUG	ASTM A 105	Super LOMU Treatment
03	COVER	ASTM A 105	
04L	LEVER STEM	AISI 4140	
05	EQUALIZER RING	AISI 4140	
06	GLAND PLATE	ASTM A 105	
07	THRUST BUTTON	AISI 1040	
08	LOWER BEARING PAD	AISI 4140	
09	UPPER BEARING PAD	AISI 4140	
10	BALL PRESSURE BALANCE	AISI 302	
11	PIN	C100	
12	STEM O-RING	VITON	
12B	STEM BACK-UP RING	NYLON	For Class 900 – 1500
13	PACKING	GRAPHITE	
14	THRUST BEARING	AISI 304/PTFE	
15	LOWER DIAPHRAGM	Fe 360 B	
16	UPPER DIAPHRAGM	AISI 304	
17	BODY STUDS	ASTM A 193 B7	
18	BODY NUTS	ASTM A 194 2H	
19	SCREW CAP	Class 5S	
20	ADJUSTING SCREW	AISI 1040	
21	GLAND PLATE O-RING	NITRILE	
22	GLAND PLATE CAP-SCREW	Class 8.8	
23	STOP COLLAR	Fe 360 B	
24	SEEGER	C100	
25	STOP PIN	C100	
26	CHECK VALVE	AISI 304	
27	STEM KEY	AISI 4140	
28	GREASE FITTING	AISI 304	
40	NAME PLATE	AISI 304	
41	LEVER SCREW	Class 8.8	
42	WRENCH	Fe 510 B	



Dwg. N°VMBO-15401501500

Quote (mm) senza indicazione di tolleranza
 grado di precisione medio: UNI-EN 22768-1
 da 0.5 a 6 oltre 6 a 30 oltre 30 a 120 oltre 120 a 400 oltre 400 a 1000 oltre 1000 a 2000
 fino a 6 a 30 a 120 a 400 a 1000 a 2000
 ALBERI
 Tolleranze:
 ±0.1 ±0.2 ±0.3 ±0.5 ±0.8 ±1.2

Dis. D.R.J. Date 10.01.09

App. D.R. Date 12.01.09

Draw A3 Scale 1:1

Rev. 0 First Issue

Full-Filled PED Requirement

Denomination Lubricated Plug Valve Inverted Type

Dn 1/2"-1.1/2" Class 150 – 1500

Component BILL OF MATERIAL

Rev.	Dis.	Date	App.	Date	Description	Review
------	------	------	------	------	-------------	--------

Questo disegno è di proprietà di ENERGY VALVES è vietata qualsiasi riproduzione senza autorizzazione

BILL OF MATERIALS

SERVICE : TEMPERATURE: -20 °C + 160°C STANDARD FLUID - CARBON STEEL TRIM - FIRE SAFE DESIGN

PART.N°	DESCRIPTION	MATERIAL	NOTE
01	BODY	ASTM A 216 WCB	
02	PLUG	ASTM A 105	Super LOMU Treatment
03	COVER	ASTM A 105	
04	STEM	AISI 4140	
04L	LEVER STEM	AISI 4140	
05	EQUALIZER RING	AISI 4140	
06	GLAND PLATE	ASTM A 105	
06A	ADAPTER PLATE	ASTM A 105	
07	THRUST BUTTON	AISI 1040	
08	LOWER BEARING PAD	AISI 4140	
09	UPPER BEARING PAD	AISI 4140	
10	BALL PRESSURE BALANCE	AISI 302	
11	PIN	C100	
12	STEM O-RING	VITON	
12B	STEM BACK-UP RING	NYLON	For Class 900 - 1500
13	PACKING	GRAPHITE	
14	THRUST BEARING	AISI 304/PTFE	
15	LOWER DIAPHRAGM	Fe 360 B	
16	UPPER DIAPHRAGM	AISI 304	
17	BODY STUDS	ASTM A 193 B7	
18	BODY NUTS	ASTM A 194 2H	
19	SCREW CAP	Class 5S	
20	ADJUSTING SCREW	AISI 1040	
21	GLAND PLATE O-RING	NITRILE	
22	GLAND PLATE CAP-SCREW	Class 8.8	
23	STOP COLLAR	Fe 360 B	
24	SEEGER	C100	
25	STOP PIN	C100	
26	CHECK VALVE	AISI 304	
27	STEM KEY	AISI 4140	
28	GREASE FITTING	AISI 304	
40	NAME PLATE	AISI 304	
41	LEVER SCREW	Class 8.8	
42	WRENCH	Fe 510 B	
52	SCREW GEAR	Class 8.8	
53	GEAR	CARBON STEEL	



Dwg. N° VMB0-1541501500

Quote (mm) senza indicazione di tolleranza grado di precisione medio: UNI-EN 22768-1				Dis. D.R.J.	Date 10.01.09
da 0.5	oltre 0.5	oltre 0.5	oltre 0.5	oltre 0.5	oltre 0.5
6	30	120	400	1000	Toll.+
fino a 6	fino a 30	fino a 120	fino a 400	fino a 1000	Toll.-
					ALBERI
±0.1	±0.2	±0.3	±0.5	±0.8	±1.2
Rev.	Dis.	Date	App.	Date	Description Review

Denomination Lubricated Plug Valve Inverted Type
Dn 1/2"-4" Class 150 - 1500

Component BILL OF MATERIAL

Questo disegno è di proprietà di ENERGY VALVES è vietata qualsiasi riproduzione senza autorizzazione

BILL OF MATERIALS

SERVICE : TEMPERATURE: -20 °C + 160°C

STANDARD FLUID – CARBON STEEL TRIM – FIRE SAFE DESIGN

PART.N°	DESCRIPTION	MATERIAL	NOTE
01	BODY	ASTM A 216 WCB	
02	PLUG	ASTM A 105	Super LOMU Treatment
03	COVER	ASTM A 105	
04	STEM	AISI 4140	
04L	LEVER STEM	AISI 4140	
05	EQUALIZER RING	AISI 4140	
06	GLAND PLATE	ASTM A 105	
06A	ADAPTER PLATE	ASTM A 105	
07	THRUST BUTTON	AISI 1040	
08	LOWER BEARING PAD	AISI 4140	
09	UPPER BEARING PAD	AISI 4140	
10	BALL PRESSURE BALANCE	AISI 302	
11	PIN	C100	
12	STEM O-RING	VITON	
12B	STEM BACK-UP RING	NYLON	For Class 900 – 1500
13	PACKING	GRAPHITE	
14	THRUST BEARING	AISI 304/PTFE	
15	LOWER DIAPHRAGM	Fe 360 B	
16	UPPER DIAPHRAGM	AISI 304	
17	BODY STUDS	ASTM A 193 B7	
18	BODY NUTS	ASTM A 194 2H	
19	SCREW CAP	Class 5S	
20	ADJUSTING SCREW	AISI 1040	
21	GLAND PLATE O-RING	NITRILE	
22	GLAND PLATE CAP-SCREW	Class 8.8	
26	CHECK VALVE	AISI 304	
27	STEM KEY	AISI 4140	
28	GREASE FITTING	AISI 304	
40	NAME PLATE	AISI 304	
41	LEVER SCREW	Class 8.8	
42	WRENCH	Fe 510 B	
52	SCREW GEAR	Class 8.8	
53	GEAR	CARBON STEEL	



Dwg. N° VMB0-6121501500

Quote (mm) senza indicazione di tolleranza grado di precisione medio: UNI-EN 22768-1				Dis. D.R.J.	Date 10.01.09
da 0.5	oltre 0.6	oltre 30	oltre 120	oltre 400	oltre 1000
fino a 0.5	fino a 0.6	fino a 30	fino a 120	fino a 400	fino a 1000
				Toll.+	ALBERI
				Toll-	
±0.1	±0.2	±0.3	±0.5	±0.8	±1.2
Rev.	Dis.	Date	App.	Date	Description Review

Denomination Lubricated Plug Valve Inverted Type
Dn 6"-12" Class 150 – 1500

Component BILL OF MATERIAL

Questo disegno è di proprietà di ENERGY VALVES è vietata qualsiasi riproduzione senza autorizzazione

BILL OF MATERIALS

SERVICE : TEMPERATURE: -20 °C + 160°C

STANDARD FLUID – CARBON STEEL TRIM – FIRE SAFE DESIGN

PART.N°	DESCRIPTION	MATERIAL	NOTE
01	BODY	ASTM A 216 WCB	
02	PLUG	ASTM A 105	Super LOMU Treatment
03	COVER	ASTM A 105	
04	STEM	AISI 4140	
05	EQUALIZER RING	AISI 4140	
06	GLAND PLATE	ASTM A 105	
07	THRUST BUTTON	AISI 1040	
08	LOWER BEARING PAD	AISI 4140	
09	UPPER BEARING PAD	AISI 4140	
10	BALL PRESSURE BALANCE	AISI 302	
11	PIN	C100	
12	STEM O-RING	VITON	
12B	STEM BACK-UP RING	NYLON	For Class 900 – 1500
13	PACKING	GRAPHITE	
14	THRUST BEARING	AISI 304/PTFE	
15	LOWER DIAPHRAGM	Fe 360 B	
16	UPPER DIAPHRAGM	AISI 304	
17	BODY STUDS	ASTM A 193 B7	
18	BODY NUTS	ASTM A 194 2H	
19	SCREW CAP	Class 5S	
20	ADJUSTING SCREW	AISI 1040	
21	GLAND PLATE O-RING	NITRILE	
22	GLAND PLATE CAP-SCREW	Class 8.8	
26	CHECK VALVE	AISI 304	
27	STEM KEY	AISI 4140	
28	GREASE FITTING	AISI 304	
40	NAME PLATE	AISI 304	
52	SCREW GEAR	Class 8.8	
53	GEAR	CARBON STEEL	



Dwg. N°VMBO-14241501500

Quote (mm) senza indicazione di tolleranza
 grado di precisione medio: UNI-EN 22768-1
 da 0.5 a 6 oltre 6 a 30 oltre 30 a 120 oltre 120 a 400 oltre 400 a 1000 oltre 1000 a 2000 oltre 2000 a 10000
 TOLL. ±0.1 ±0.2 ±0.3 ±0.5 ±0.8 ±1.2

Dis. D.R.J.	Date 10.01.09
App. D.R.	Date 12.01.09
Draw A3	Scale 1:1
Rev. 0	First Issue

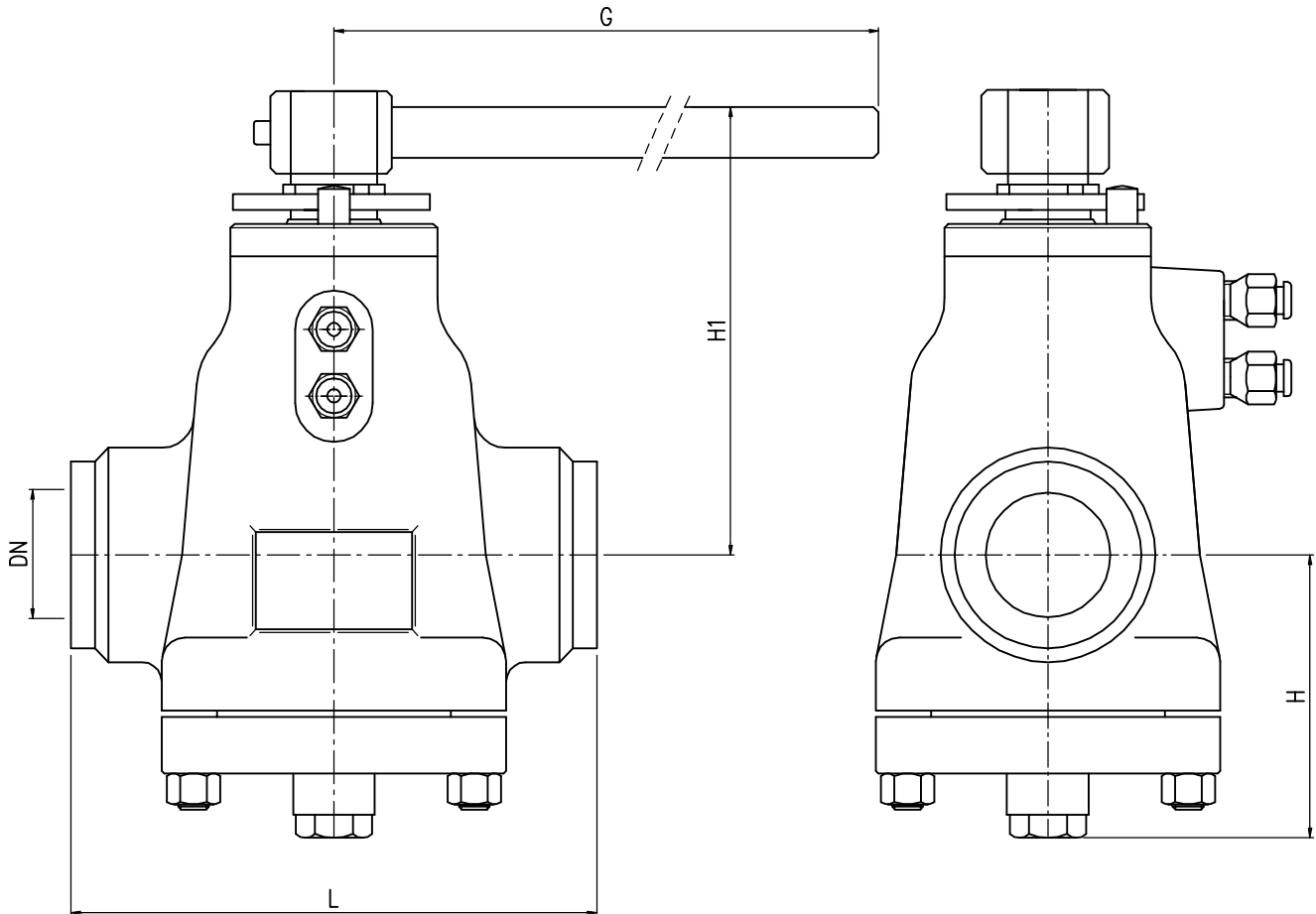
Denomination Lubricated Plug Valve Inverted Type
Dn 14"-24" Class 150 – 1500

Component BILL OF MATERIAL

Full-Filled PED Requirement					
Rev.	Dis.	Date	App.	Date	Description Review

Questo disegno è di proprietà di ENERGY VALVES è vietata qualsiasi riproduzione senza autorizzazione

NB	DN	Port Area	THD	L	WE	H	H1	G	Weight
1/2"	15	70%	89	89	89	90	110	400	3
3/4"	20	70%	133	133	133	90	110	400	7
1"	25	70%	133	133	133	90	110	400	7
1.1/2"	40	70%	229	229	229	105	120	600	20
2"	50	70%	229	229	229	120	155	600	25



- NOTES:
- Flanges in according with ANSI B.16.5
 - Buttwelding end in according with ANSI B.16.25
 - Face to face dimensions according to API 6D spec.
 - Valves in according to API 6D spec. - API 599
 - Dimensions are in mm.
 - Estimated valve weight are in Kg.

ENERGY VALVES

Dwg. N° VMD-15406001500

Quote (mm) senza indicazione di tolleranza grado di precisione medio: UNI-EN 22768-1	Dis. D.R.J.	Date 10.01.09
da 0.5 a 6	App. D.R.	Date 12.01.09
oltre 6 a 30	Draw A3	Scale 1:1
oltre 30 a 120	Rev. 0	First Issue
oltre 120 a 400	Full-Filled PED Requirement	
oltre 400 a 1000		
oltre 1000 a 2000		
oltre 2000		
Toll.+		
Toll.-		

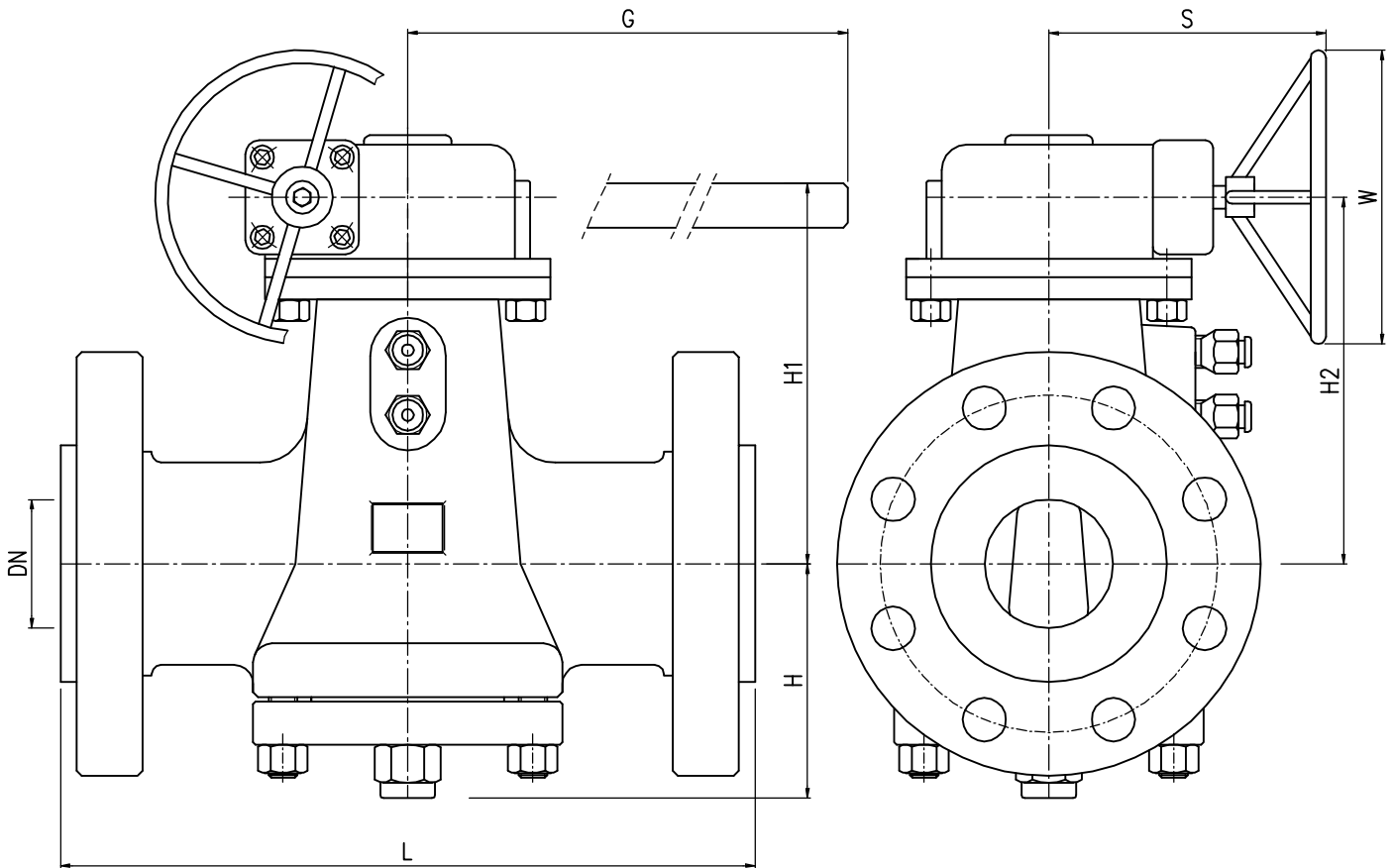
Denomination Lubricated Plug Valve Inverted Type
Dn 1/2"-1.1/2" Class 600-800-1500

Component OVERALL DIMENSIONS

Rev.	Dis.	Date	App.	Date	Description	Review
------	------	------	------	------	-------------	--------

Questo disegno è di proprietà di ENERGY VALVES è vietata qualsiasi riproduzione senza autorizzazione

NB	DN	Port Area	L		RTJ	H	H1	G	H2	S	W	Weight	
			RF	WE								RF	WE
1/2"	15	70%	216	—	216	90	110	400	—	—	—	8	—
3/4"	20	70%	229	—	229	90	110	400	—	—	—	9	—
1"	25	70%	254	—	254	90	110	400	—	—	—	10	—
1.1/2"	40	70%	305	—	305	105	120	500	—	—	—	14	—
2"	50	70%	368	368	372	120	155	900	165	220	300	50	35
3"	80	70%	381	381	384	140	210	900	225	335	500	90	75
4"	100	70%	457	457	460	160	230	900	245	335	500	130	110



- NOTES:**
- Flanges in according with ASME B.16.5
 - Buttwelding end in according with ANSI B.16.25
 - Face to face dimensions according to API 6D spec.
 - Valves in according to API 6D spec. - API 599
 - Dimensions are in mm.
 - Estimated valve weight are in Kg.



Dwg. N° VMD-154300

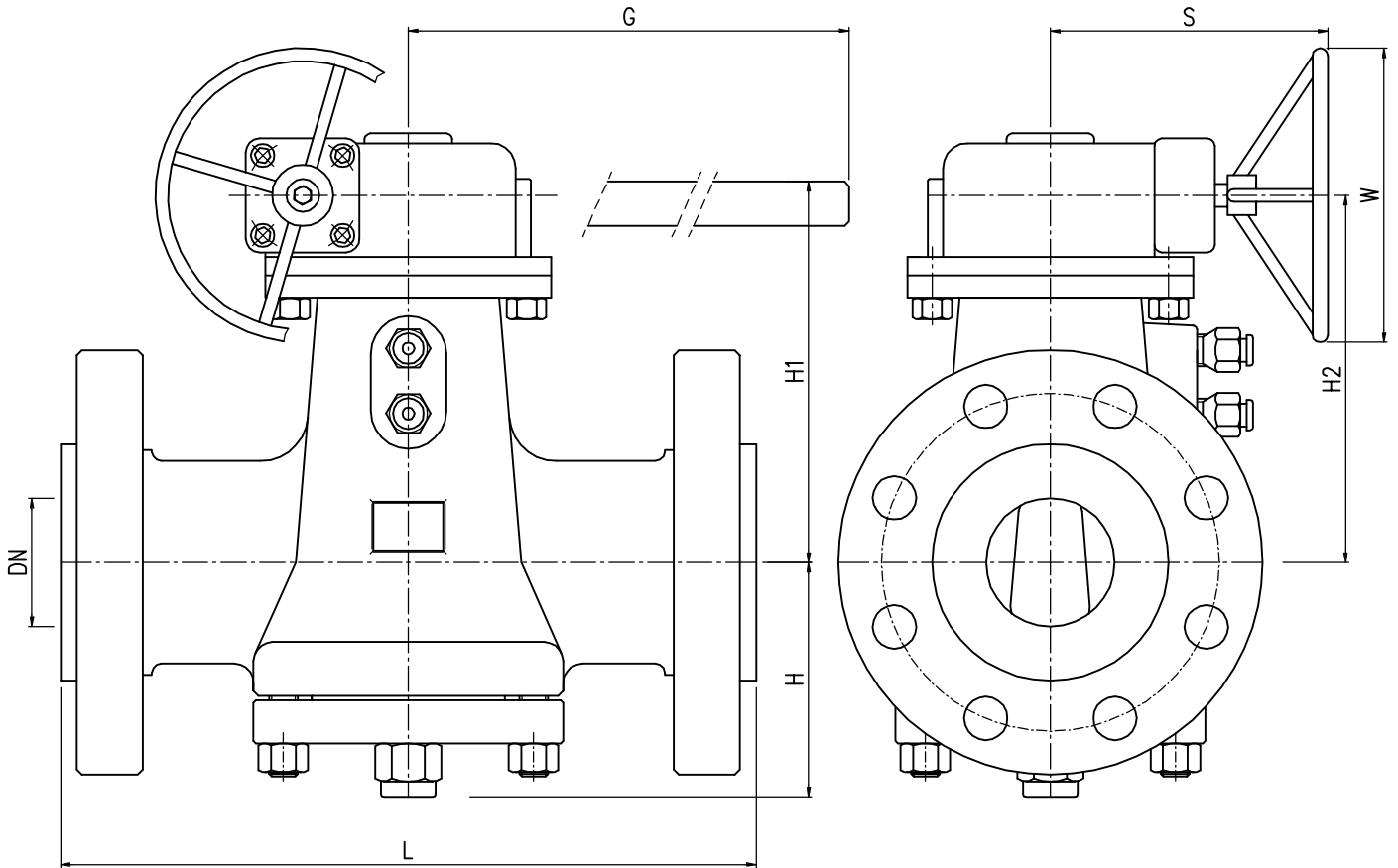
Quote (mm) senza indicazione di tolleranza grado di precisione medio: UNI-EN 22768-1		Dis. D.R.J.	Date 10.01.09
da 0.5 a 6	oltre 6 a 30	oltre 30 a 120	oltre 120 a 400
oltre 400 a 1000	oltre 1000 a 2000	oltre 2000 a 4000	oltre 4000 a 10000
Toll.+	Toll.-	Toll.+	Toll.-
±0.1	±0.2	±0.3	±0.5
±0.8	±1.2	±1.2	±1.2
App. D.R.		Date 12.01.09	
Draw A3		Scale 1:1	
Rev. 0 First Issue			
Full-Filled PED Requirement			
Rev.	Dis.	Date	App.
Date	Date	Description	Review

Denomination Lubricated Plug Valve Inverted Type
Dn 1/2"-4" Class 300

Component OVERALL DIMENSIONS

Questo disegno è di proprietà di ENERGY VALVES è vietata qualsiasi riproduzione senza autorizzazione

NB	DN	Area	RF	L		H	H1	G	H2	S	W	Weight	
				WE	RTJ							RF	WE
1/2"	15	70%	165	—	165	90	110	400	—	—	—	8	—
3/4"	20	70%	190	—	190	90	110	400	—	—	—	9	—
1"	25	70%	216	—	216	90	110	400	—	—	—	10	—
1.1/2"	40	70%	241	—	241	105	120	500	—	—	—	14	—
2"	50	70%	292	292	295	120	155	600	165	220	300	30	25
3"	80	70%	356	356	359	140	210	600	225	220	300	45	35
4"	100	70%	432	432	435	160	230	900	245	220	300	85	75



- NOTES:**
- Flanges in according with ANSI B.16.5
 - Buttwelding end in according with ANSI B.16.25
 - Face to face dimensions according to API 6D spec.
 - Valves in according to API 6D spec. - API 599
 - Dimensions are in mm.
 - Estimated valve weight are in Kg.

ENERGY VALVES

Dwg. N° VMD-154600

Quote (mm) senza indicazione di tolleranza grado di precisione medio: UNI-EN 22768-1	Dis. D.R.J.	Date 10.01.09
da 0.5 a 6 oltre 6 oltre 30 oltre 120 oltre 400 oltre 1000	App. D.R.	Date 12.01.09
FOR: TOLL. + ALBERI: TOLL. -	Draw A3	Scale 1:1
±0.1 ±0.2 ±0.3 ±0.5 ±0.8 ±1.2	Rev. 0	First Issue

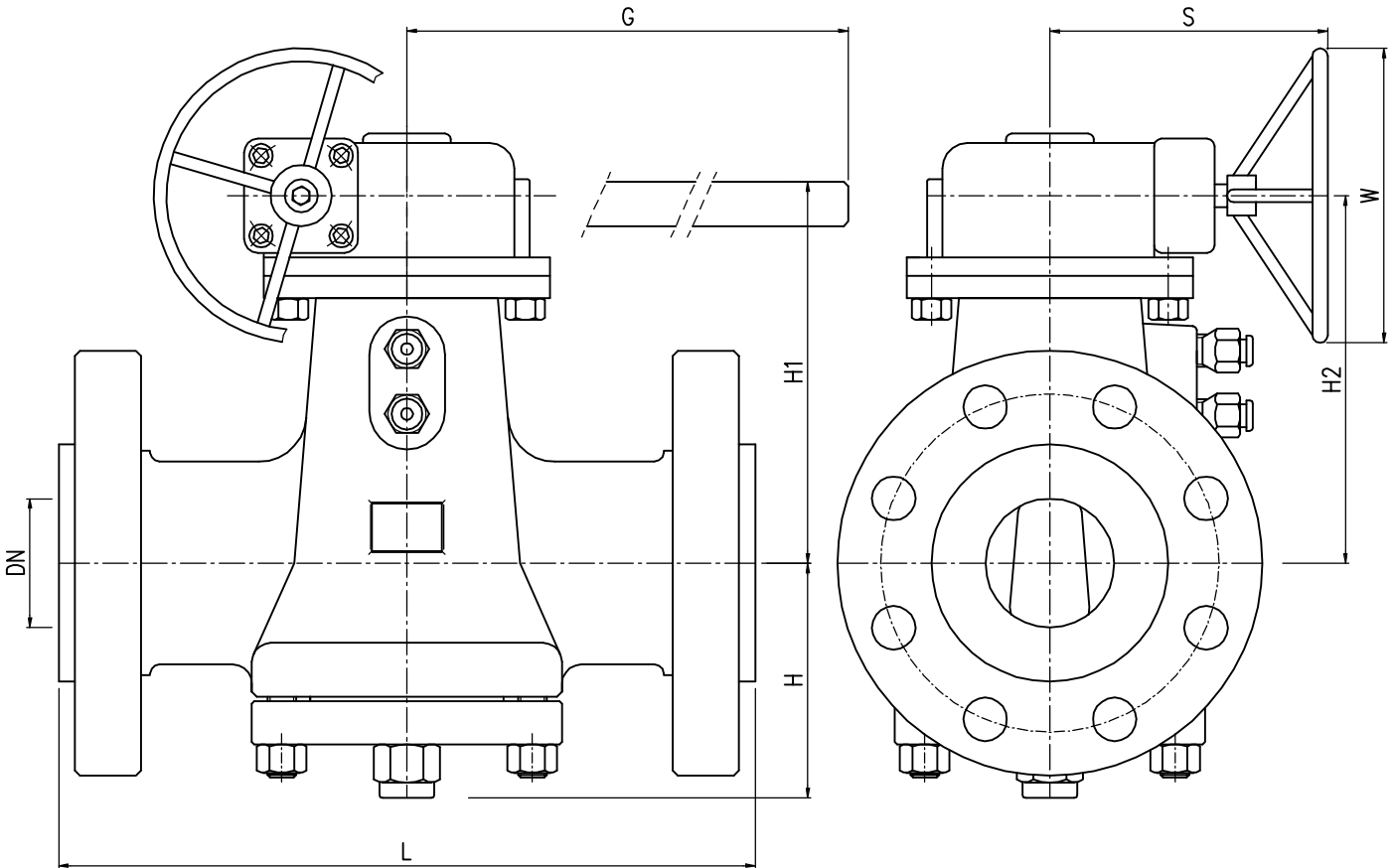
Denomination Lubricated Plug Valve Inverted Type
Dn 1/2"-4" Class 600

Component OVERALL DIMENSIONS

Full-Filled PED Requirement
Rev. Dis. Date App. Date Description Review

Questo disegno è di proprietà di ENERGY VALVES è vietata qualsiasi riproduzione senza autorizzazione

NB	DN	Port Area	L		RTJ	H	H1	G	H2	S	W	Weight	
			RF	WE								RF	WE
1/2"	15	70%	216	-	216	90	110	400	-	-	-	8	-
3/4"	20	70%	229	-	229	90	110	400	-	-	-	9	-
1"	25	70%	254	-	254	90	110	400	-	-	-	10	-
1.1/2"	40	70%	305	-	305	105	120	500	-	-	-	14	-
2"	50	70%	368	368	372	120	155	900	165	220	300	50	35
3"	80	70%	381	381	384	140	210	900	225	335	500	90	75
4"	100	70%	457	457	460	160	230	900	245	335	500	130	110



- NOTES:
- Flanges in according with ASME B.16.5
 - Buttwelding end in according with ANSI B.16.25
 - Face to face dimensions according to API 6D spec.
 - Valves in according to API 6D spec. - API 599
 - Dimensions are in mm.
 - Estimated valve weight are in Kg.

ENERGY VALVES

Dwg. N° VMD-154900

Quote (mm) senza indicazione di tolleranza grado di precisione medio: UNI-EN 22768-1	Dis. D.R.J.	Date 10.01.09
da 0.5 a 6 oltre 6 a 30 oltre 30 a 120 oltre 120 a 400 oltre 400 a 1000 oltre 1000 a 2000	App. D.R.	Date 12.01.09
FORI: TOLL. + ALBERI: TOLL. -	Draw A3	Scale 1:1
±0.1 ±0.2 ±0.3 ±0.5 ±0.8 ±1.2	Rev. 0	First Issue

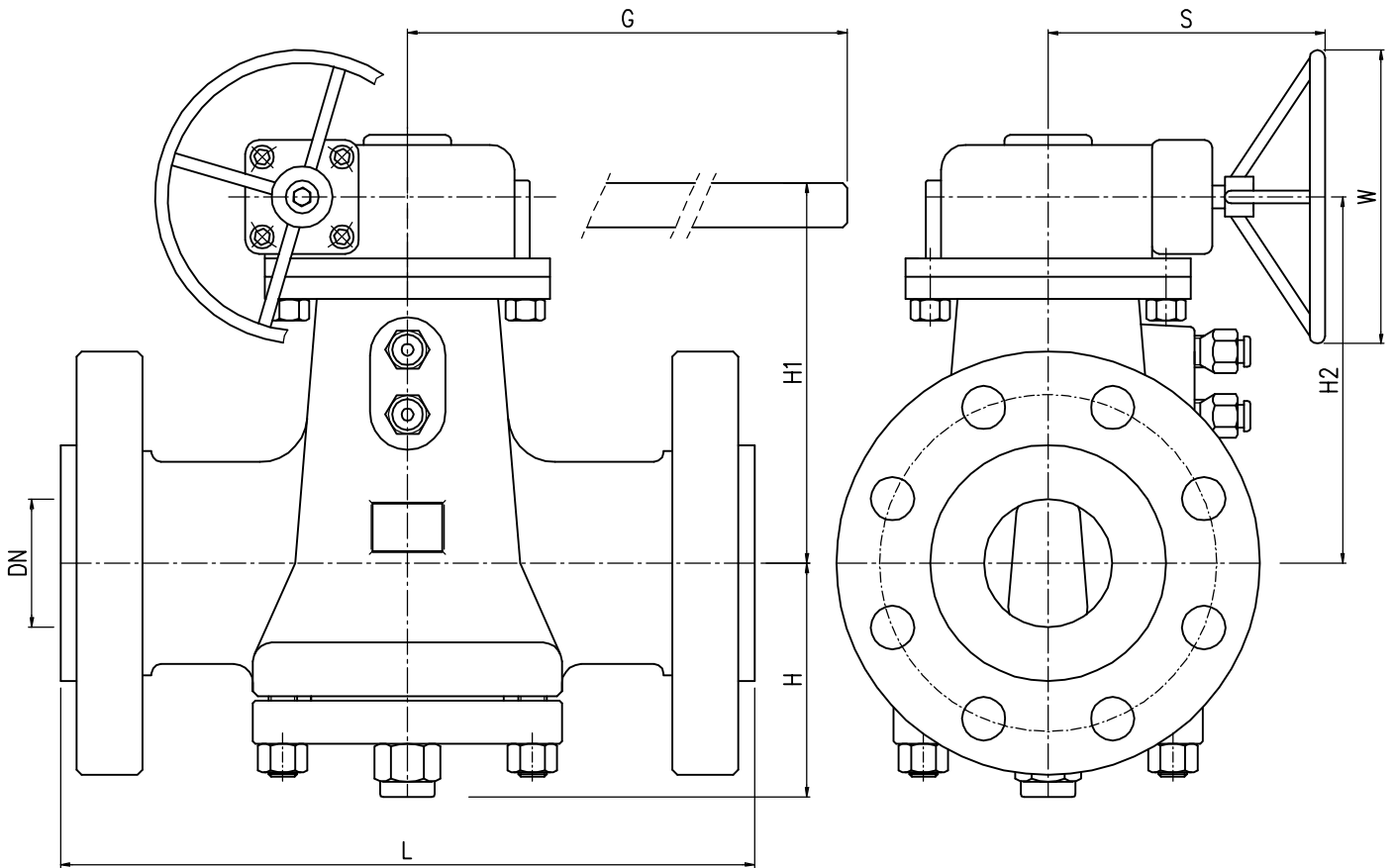
Denomination Lubricated Plug Valve Inverted Type
Dn 1/2"-4" Class 900

Component OVERALL DIMENSIONS

Full-Filled PED Requirement
Rev. Dis. Date App. Date Description Review

Questo disegno è di proprietà di ENERGY VALVES è vietata qualsiasi riproduzione senza autorizzazione

NB	DN	Area	RF	L		H	H1	G	H2	S	W	Weight	
				WE	RTJ							RF	WE
1/2"	15	70%	216	—	216	90	110	400	—	—	—	8	—
3/4"	20	70%	229	—	229	90	110	400	—	—	—	9	—
1"	25	70%	254	—	254	90	110	400	—	—	—	10	—
1.1/2"	40	70%	305	—	305	105	120	500	—	—	—	14	—
2"	50	70%	368	368	372	120	155	900	165	220	300	50	35
3"	80	70%	470	470	473	140	210	900	225	335	500	100	85
4"	100	70%	546	546	549	160	230	900	245	335	500	180	160



- NOTES:**
- Flanges in according with ANSI B.16.5
 - Butt welding end in according with ANSI B.16.25
 - Face to face dimensions according to API 6D spec.
 - Valves in according to API 6D spec. - API 599
 - Dimensions are in mm.
 - Estimated valve weight are in Kg.



Dwg. N° VMD-1541500

Quote (mm) senza indicazione di tolleranza grado di precisione medio: UNI-EN 22768-1	Dis. D.R.J.	Date 10.01.09
da 0.5 a 6 oltre 6 a 30 oltre 30 a 120 oltre 120 a 400 oltre 400 a 1000 oltre 1000 a 2000 ALBERI Toll.+ Toll.-	App. D.R.	Date 12.01.09
±0.1 ±0.2 ±0.3 ±0.5 ±0.8 ±1.2	Draw A3	Scale 1:1
	Rev. 0	First Issue

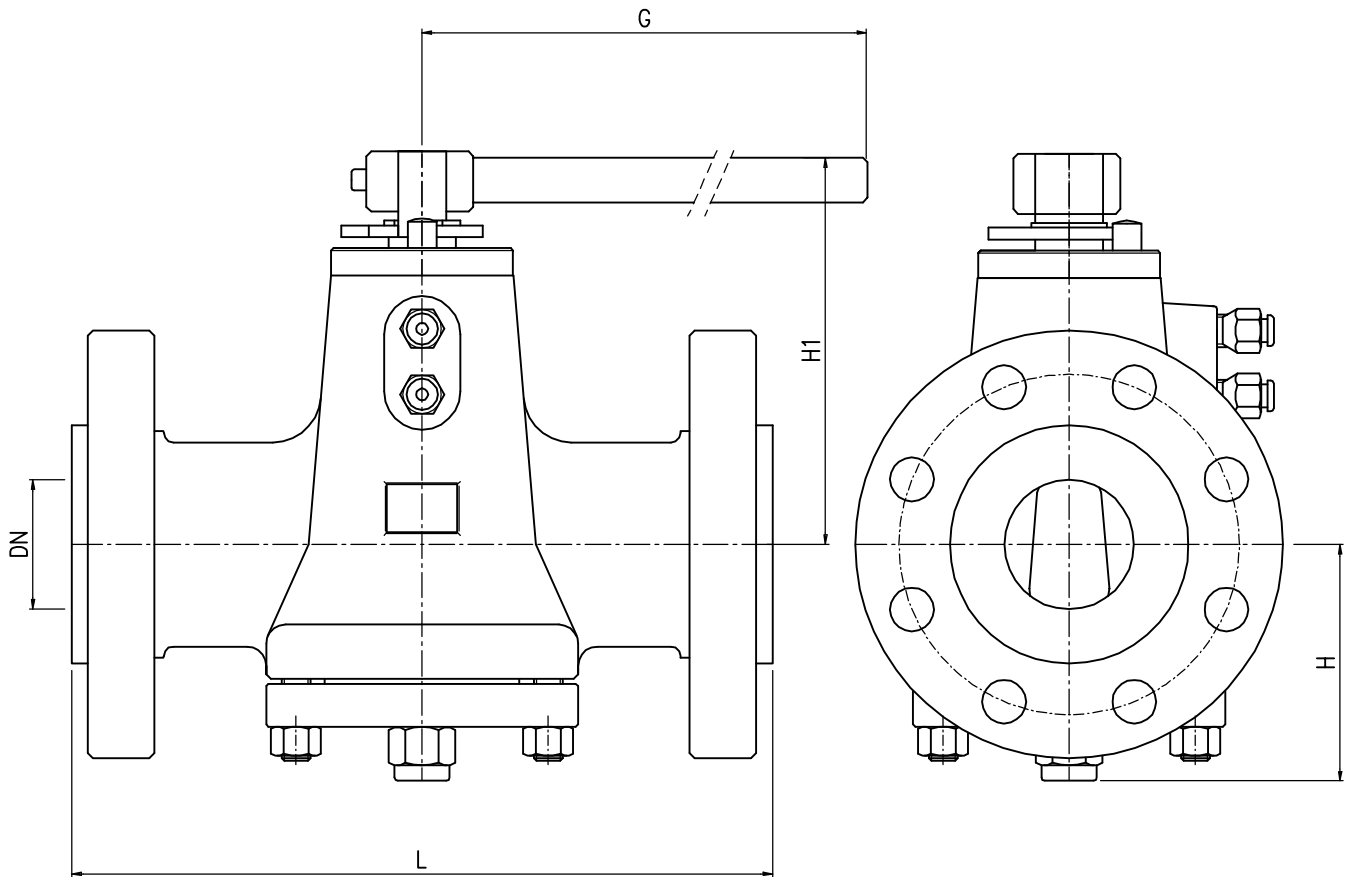
Denomination Lubricated Plug Valve Inverted Type
Dn 1/2"-4" Class 1500

Component OVERALL DIMENSIONS

Rev.	Dis.	Date	App.	Date	Description Review

Questo disegno è di proprietà di ENERGY VALVES è vietata qualsiasi riproduzione senza autorizzazione

NB	DN	Port Area	RF	L		H	H1	G	Weight	
				WE	RTJ				RF	WE
2"	50	70%	178	267	191	90	155	600	20	18
3"	80	70%	203	330	216	140	210	600	35	30
4"	100	70%	229	356	241	160	230	600	55	50



- NOTES:
- Flanges in according with ASME B.16.5
 - Buttwelding end in according with ANSI B.16.25
 - Face to face dimensions according to API 6D spec.
 - Valves in according to API 6D spec. – API 599
 - Dimensions are in mm.
 - Estimated valve weight are in Kg.

ENERGY VALVES

Dwg. N° VMD-24150

Quote (mm) senza indicazione di tolleranza grado di precisione medio: UNI-EN 22768-1	Dis. D.R.J.	Date 10.01.09
da 0.5 a 6	App. D.R.	Date 12.01.09
oltre 6 a 30	Draw A3	Scale 1:1
oltre 30 a 120	Rev. 0	First Issue
oltre 120 a 400	Full-Filled PED Requirement	
oltre 400 a 1000		
oltre 1000 a 2000		
oltre 2000 ALBERI		
Toll.+		
Toll-		

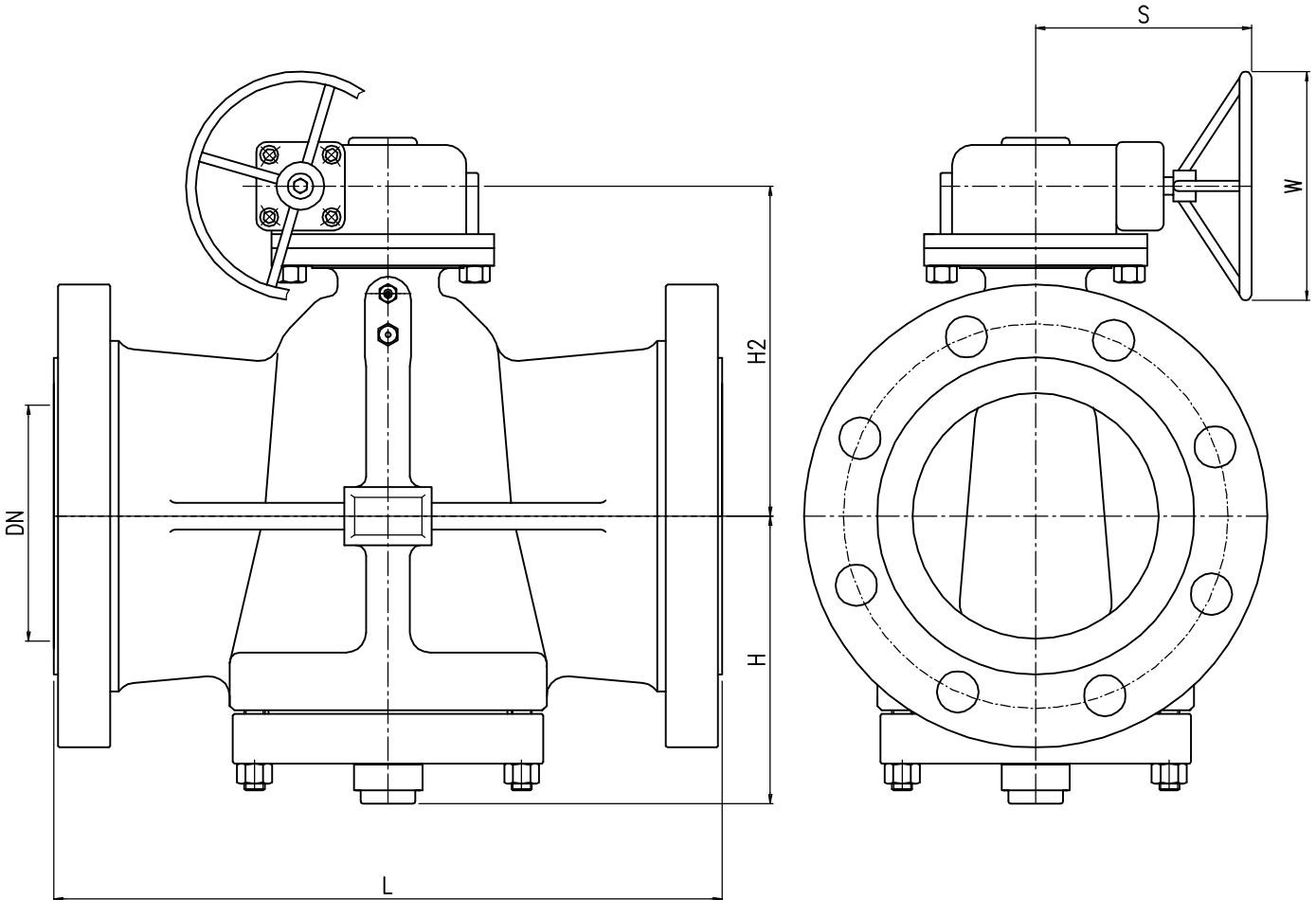
Denomination Lubricated Plug Valve Inverted Type
Dn 2"-4" Class 150

Component OVERALL DIMENSIONS

Rev.	Dis.	Date	App.	Date	Description	Review

Questo disegno è di proprietà di ENERGY VALVES è vietata qualsiasi riproduzione senza autorizzazione

NB	DN	Area	RF	L		H	H2	S	W	Weight	
				WE	RTJ					RF	WE
6"	150	40%	267	457	—	195	230	330	500	90	85
8"	200	40%	292	521	—	250	360	330	500	150	140
10"	250	40%	330	559	—	310	480	330	500	210	190
12"	300	40%	356	762	—	360	530	345	700	280	270



- NOTES:
- Flanges in according with ANSI B.16.5
 - Buttwelding end in according with ANSI B.16.25
 - Face to face dimensions according to API 6D spec.
 - Valves in according to API 6D spec. - API 599
 - Dimensions are in mm.
 - Estimated valve weight are in Kg.

ENERGY VALVES

Dwg. N° VMD-612150

Quote (mm) senza indicazione di tolleranza grado di precisione medio: UNI-EN 22768-1	Dis. D.R.J.	Date 10.01.09
da 0.5 a 6 oltre 6 a 30 oltre 30 a 120 oltre 120 a 400 oltre 400 a 1000 oltre 1000 a 2000 ALBERI Toll-	App. D.R.	Date 12.01.09
±0.1 ±0.2 ±0.3 ±0.5 ±0.8 ±1.2	Draw A3	Scale 1:1
	Rev. 0	First Issue

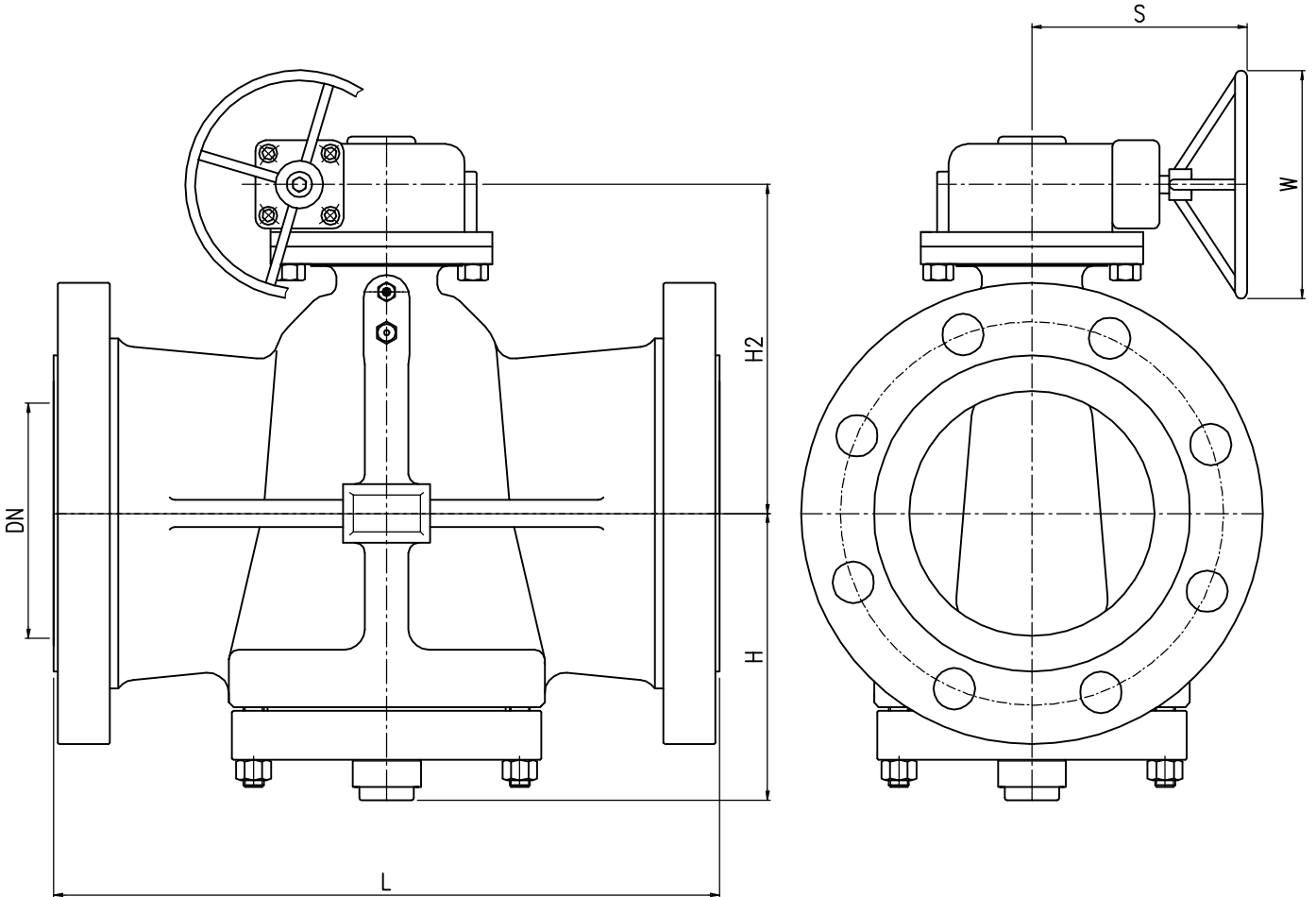
Denomination Lubricated Plug Valve Inverted Type
Short Pattern Dn 6"-12" Class 150

Component OVERALL DIMENSIONS

Rev.	Dis.	Date	App.	Date	Description Review

Questo disegno è di proprietà di ENERGY VALVES è vietata qualsiasi riproduzione senza autorizzazione

NB	DN	Area	RF	L		H	H2	S	W	Weight	
				WE	RTJ					RF	WE
6"	150	60%	403	457	—	220	290	330	500	130	100
8"	200	60%	502	521	—	300	344	320	500	170	150
10"	250	60%	568	559	—	350	410	320	500	240	210
12"	300	60%	711	241	—	360	400	345	700	330	300



- NOTES:
- Flanges in according with ANSI B.16.5
 - Buttwelding end in according with ANSI B.16.25
 - Face to face dimensions according to API 6D spec.
 - Valves in according to API 6D spec. – API 599
 - Dimensions are in mm.
 - Estimated valve weight are in Kg.

ENERGY VALVES

Dwg. N° VMD-612300R

Quote (mm) senza indicazione di tolleranza
grado di precisione medio: UNI-EN 22768-1

da 0.5	oltre 0.5	oltre 30	oltre 120	oltre 400	oltre 1000	FORI- Toll.+
fino a 6	fino a 30	fino a 120	fino a 400	fino a 1000	ALBERI- Toll-	
±0.1	±0.2	±0.3	±0.5	±0.8	±1.2	

Dis. D.R.J. Date 10.01.09

App. D.R. Date 12.01.09

Draw A3 Scale 1:1

Rev. 0 First Issue

Full-Filled PED Requirement

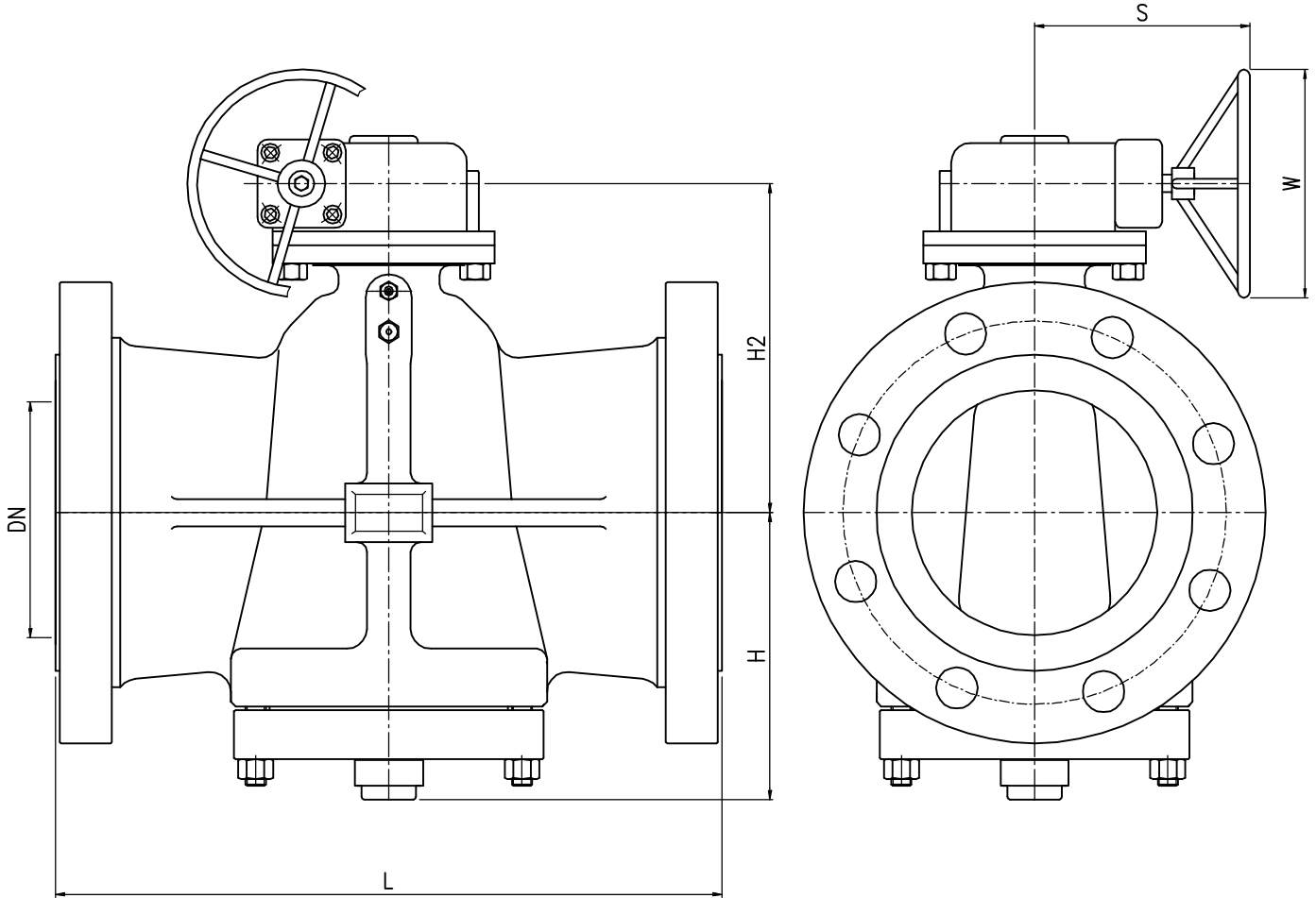
Denomination Lubricated Plug Valve Inverted Type
Regular Pattern Dn 6"-12" Class 300

Component OVERALL DIMENSIONS

Rev.	Dis.	Date	App.	Date	Description	Review
------	------	------	------	------	-------------	--------

Questo disegno è di proprietà di ENERGY VALVES è vietata qualsiasi riproduzione senza autorizzazione

NB	DN	Area	L			H	H2	S	W	Weight	
			RF	WE	RTJ					RF	WE
6"	150	40%	403	457	419	200	260	330	500	130	100
8"	200	40%	419	521	435	210	310	320	500	170	150
10"	250	40%	457	559	473	250	360	320	500	240	210
12"	300	40%	502	635	520	280	390	345	700	330	300



NOTES:

- Flanges in according with ANSI B.16.5
- Buttwelding end in according with ANSI B.16.25
- Face to face dimensions according to API 6D spec.
- Valves in according to API 6D spec. - API 599
- Dimensions are in mm.
- Estimated valve weight are in Kg.



Dwg. N° VMD-612300V

Quote (mm) senza indicazione di tolleranza
 grado di precisione medio: UNI-EN 22768-1
 da 0.5 a 6 oltre 6 a 30 oltre 30 a 120 oltre 120 a 400 oltre 400 a 1000 FORI+
 fino a 6 a 30 fino a 30 a 120 fino a 120 a 400 fino a 400 a 1000 ALBERI+
 ±0.1 ±0.2 ±0.3 ±0.5 ±0.8 ±1.2 TOLL-

Dis. D.R.J. Date 10.01.09

App. D.R. Date 12.01.09

Draw A3 Scale 1:1

Rev. 0 First Issue

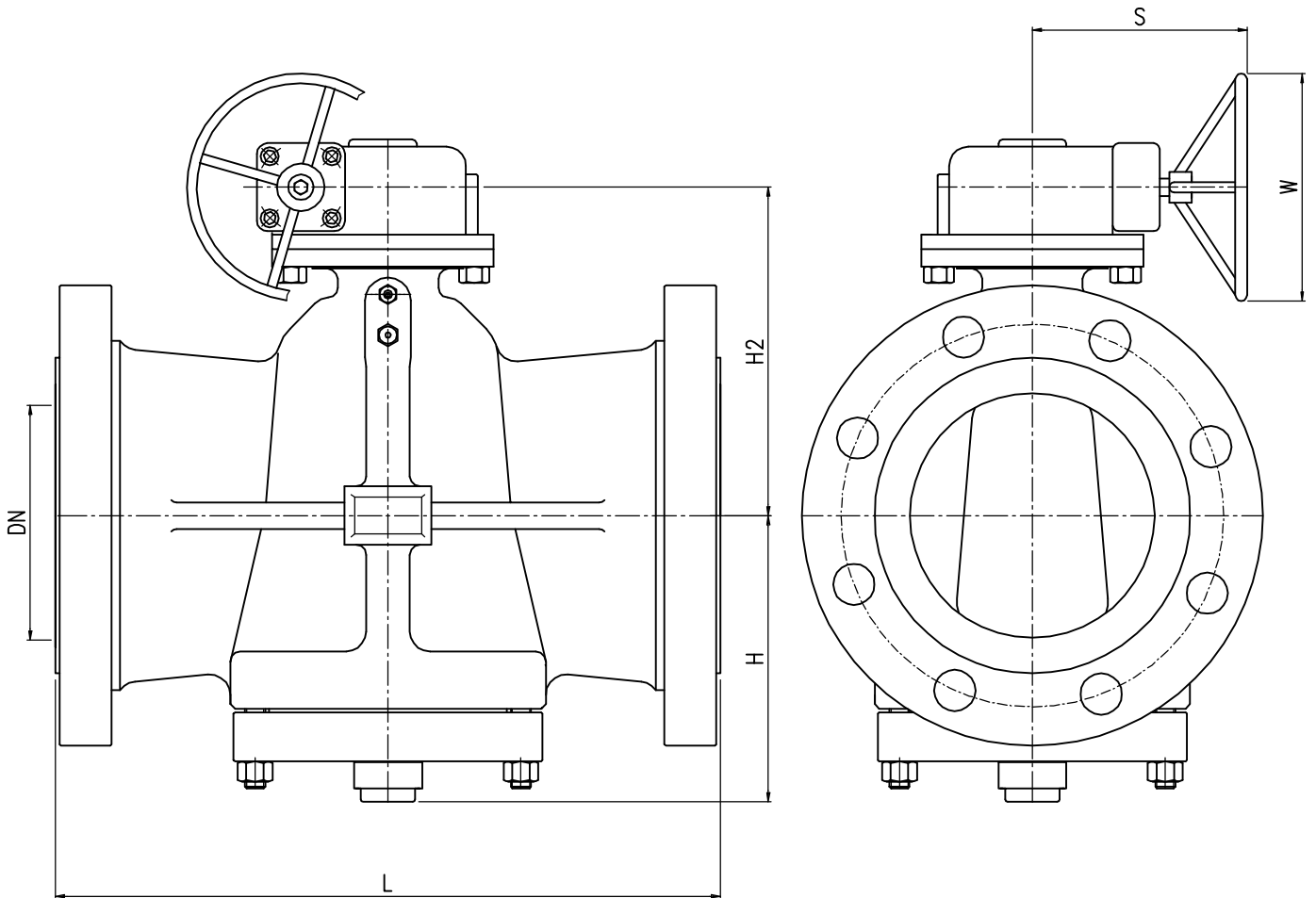
Full-Filled PED Requirement

Denomination Lubricated Plug Valve Inverted Type
Venturi Pattern Dn 6"-12" Class 300

Component OVERALL DIMENSIONS

Rev.	Dis.	Date	App.	Date	Description	Review

NB	DN	Area	L			H	H2	S	W	Weight	
			RF	WE	RTJ					RF	WE
6"	150	60%	559	559	562	250	460	330	500	160	150
8"	200	60%	660	660	664	300	520	320	700	280	220
10"	250	60%	787	787	791	320	560	320	700	400	300
12"	300	60%	838	838	841	380	600	345	700	560	420



- NOTES:**
- Flanges in according with ANSI B.16.5
 - Buttwelding end in according with ANSI B.16.25
 - Face to face dimensions according to API 6D spec.
 - Valves in according to API 6D spec. - API 599
 - Dimensions are in mm.
 - Estimated valve weight are in Kg.

ENERGY VALVES

Dwg. N° VMD-612600R

Quote (mm) senza indicazione di tolleranza
 grado di precisione medio: UNI-EN 22768-1
 da 0.5 a 6 oltre 30 oltre 120 oltre 400 oltre 1000
 fino a 6 fino a 30 fino a 120 fino a 400 fino a 1000
 ALBERI TOLL-
 ±0.1 ±0.2 ±0.3 ±0.5 ±0.8 ±1.2

Dis. D.R.J. Date 10.01.09

App. D.R. Date 12.01.09

Draw A3 Scale 1:1

Rev. 0 First Issue

Full-Filled PED Requirement

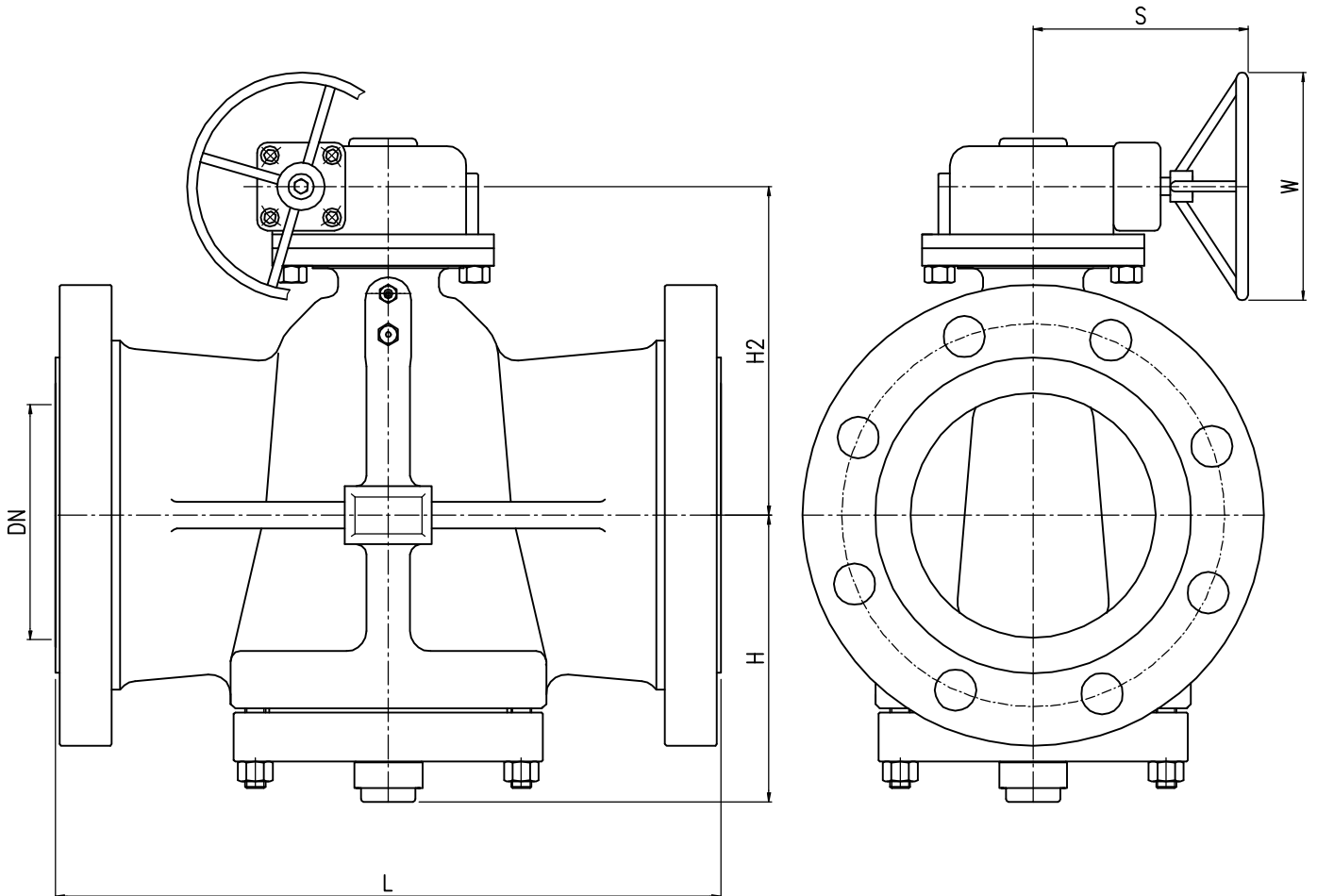
Denomination Lubricated Plug Valve Inverted Type
Regular Pattern Dn 6"-12" Class 600

Component OVERALL DIMENSIONS

Rev.	Dis.	Date	App.	Date	Description	Review

Questo disegno è di proprietà di ENERGY VALVES è vietata qualsiasi riproduzione senza autorizzazione

NB	DN	Area	L			H	H2	S	W	Weight	
			RF	WE	RTJ					RF	WE
6"	150	40%	559	559	562	250	460	330	500	160	150
8"	200	40%	660	660	664	300	520	320	700	280	220
10"	250	40%	787	787	791	320	560	320	700	400	300
12"	300	40%	838	838	841	380	600	345	700	560	420



NOTES:

- Flanges in according with ANSI B.16.5
- Buttwelding end in according with ANSI B.16.25
- Face to face dimensions according to API 6D spec.
- Valves in according to API 6D spec. – API 599
- Dimensions are in mm.
- Estimated valve weight are in Kg.



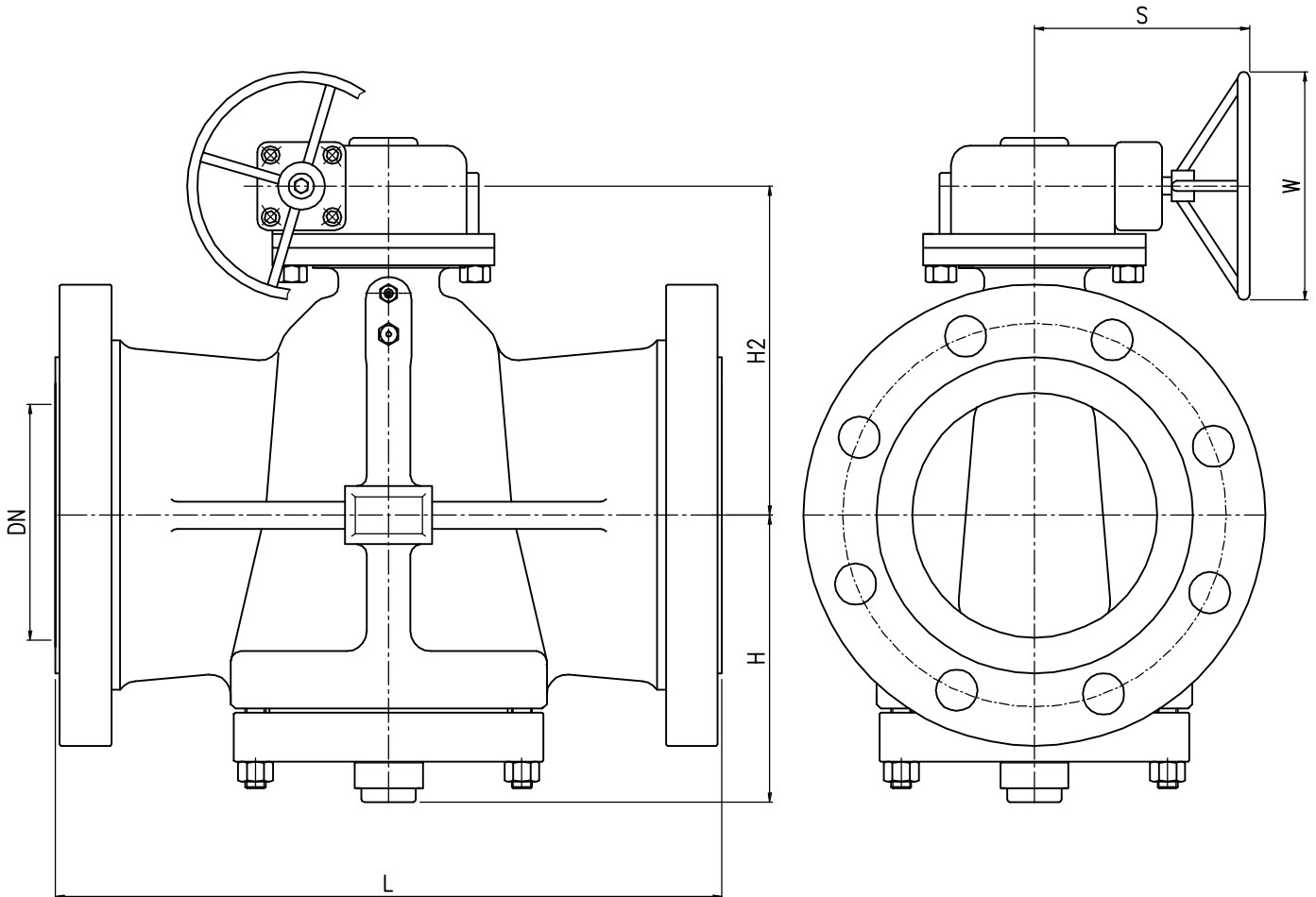
Dwg. N° VMD-612600V

Quote (mm) senza indicazione di tolleranza grado di precisione medio: UNI-EN 22768-1		Dis. D.R.J.	Date 10.01.09
da 0.5 a 6	oltre 6 a 30	oltre 30 a 120	oltre 120 a 400
oltre 400 a 1000	oltre 1000 a 2000	oltre 2000 a 4000	oltre 4000 a 10000
±0.1	±0.2	±0.3	±0.5
±0.8	±1.2	±1.2	±1.2
Toll.+		App. D.R.	Date 12.01.09
Toll.-		Draw A3	Scale 1:1
ALBERI		Rev. 0	First Issue
Full-Filled PED Requirement			
Rev.	Dis.	Date	App.
Date	Description	Review	

Denomination Lubricated Plug Valve Inverted Type
Venturi Pattern Dn 6"-12" Class 600

Component OVERALL DIMENSIONS

NB	DN	Port Area	L			H	H2	S	W	Weight	
			RF	WE	RTJ					RF	WE
6"	150	40%	610	610	613	270	530	330	700	250	180
8"	200	40%	737	737	740	310	550	320	700	450	300
10"	250	40%	838	838	841	390	590	320	700	750	550
12"	300	40%	965	965	968	420	630	345	700	1050	850



- NOTES:**
- Flanges in according with ASME B.16.5
 - Buttwelding end in according with ANSI B.16.25
 - Face to face dimensions according to API 6D spec.
 - Valves in according to API 6D spec. – API 599
 - Dimensions are in mm.
 - Estimated valve weight are in Kg.

ENERGY VALVES

Dwg. N° VMD-612900V

Quote (mm) senza indicazione di tolleranza grado di precisione medio: UNI-EN 22768-1	Dis. D.R.J.	Date 10.01.09
da 0.5 a 6	App. D.R.	Date 12.01.09
oltre 6 fino a 30	Draw A3	Scale 1:1
oltre 30 fino a 120	Rev. 0	First Issue
oltre 120 fino a 400	Full-Filled PED Requirement	
oltre 400 fino a 1000		
oltre 1000 fino a 2000		
ALBERI TOLL-		
±0.1		
±0.2		
±0.3		
±0.5		
±0.8		
±1.2		

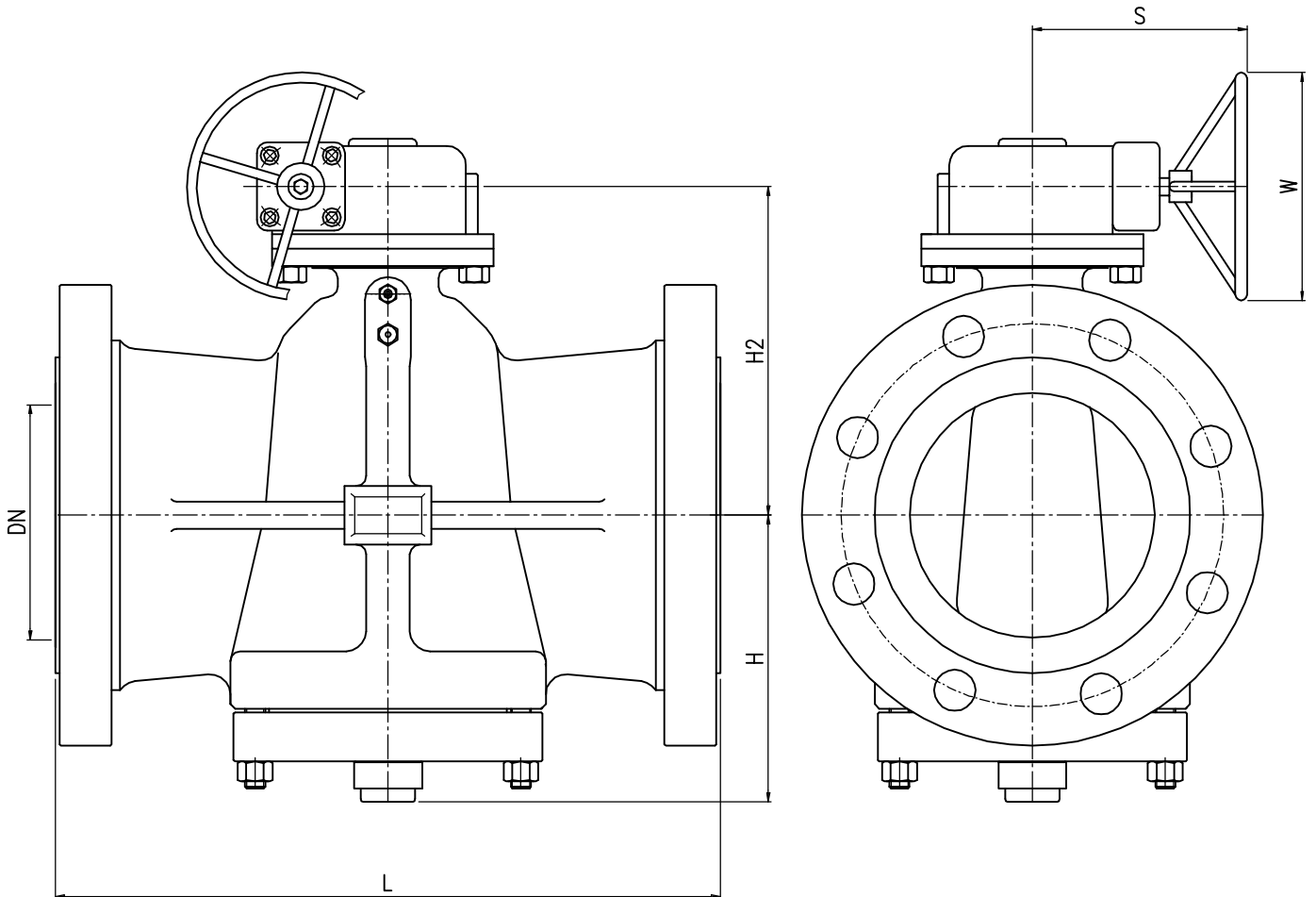
Denomination Lubricated Plug Valve Inverted Type
Venturi Pattern Dn 6"-12" Class 900

Component OVERALL DIMENSIONS

Rev.	Dis.	Date	App.	Date	Description	Review
------	------	------	------	------	-------------	--------

Questo disegno è di proprietà di ENERGY VALVES è vietata qualsiasi riproduzione senza autorizzazione

NB	DN	Area	L			H	H2	S	W	Weight	
			RF	WE	RTJ					RF	WE
6"	150	40%	705	705	711	270	530	330	700	420	330
8"	200	40%	832	832	841	310	550	320	700	730	550
10"	250	40%	991	991	1000	390	590	320	700	1160	950
12"	300	40%	1130	1130	1146	420	630	345	700	1880	1520



- NOTES:
- Flanges in according with ANSI B.16.5
 - Butt welding end in according with ANSI B.16.25
 - Face to face dimensions according to API 6D spec.
 - Valves in according to API 6D spec. - API 599
 - Dimensions are in mm.
 - Estimated valve weight are in Kg.

ENERGY VALVES

Dwg. N° VMD-6121500V

Quote (mm) senza indicazione di tolleranza grado di precisione medio: UNI-EN 22768-1	Dis. D.R.J.	Date 10.01.09
da 0.5 a 6 oltre 6 oltre 30 oltre 120 oltre 400 oltre 1000	App. D.R.	Date 12.01.09
fino a 6 fino a 30 fino a 120 fino a 400 fino a 1000 fino a 2000	Draw A3	Scale 1:1
ALBERI Toll- Toll+	Rev. 0	First Issue

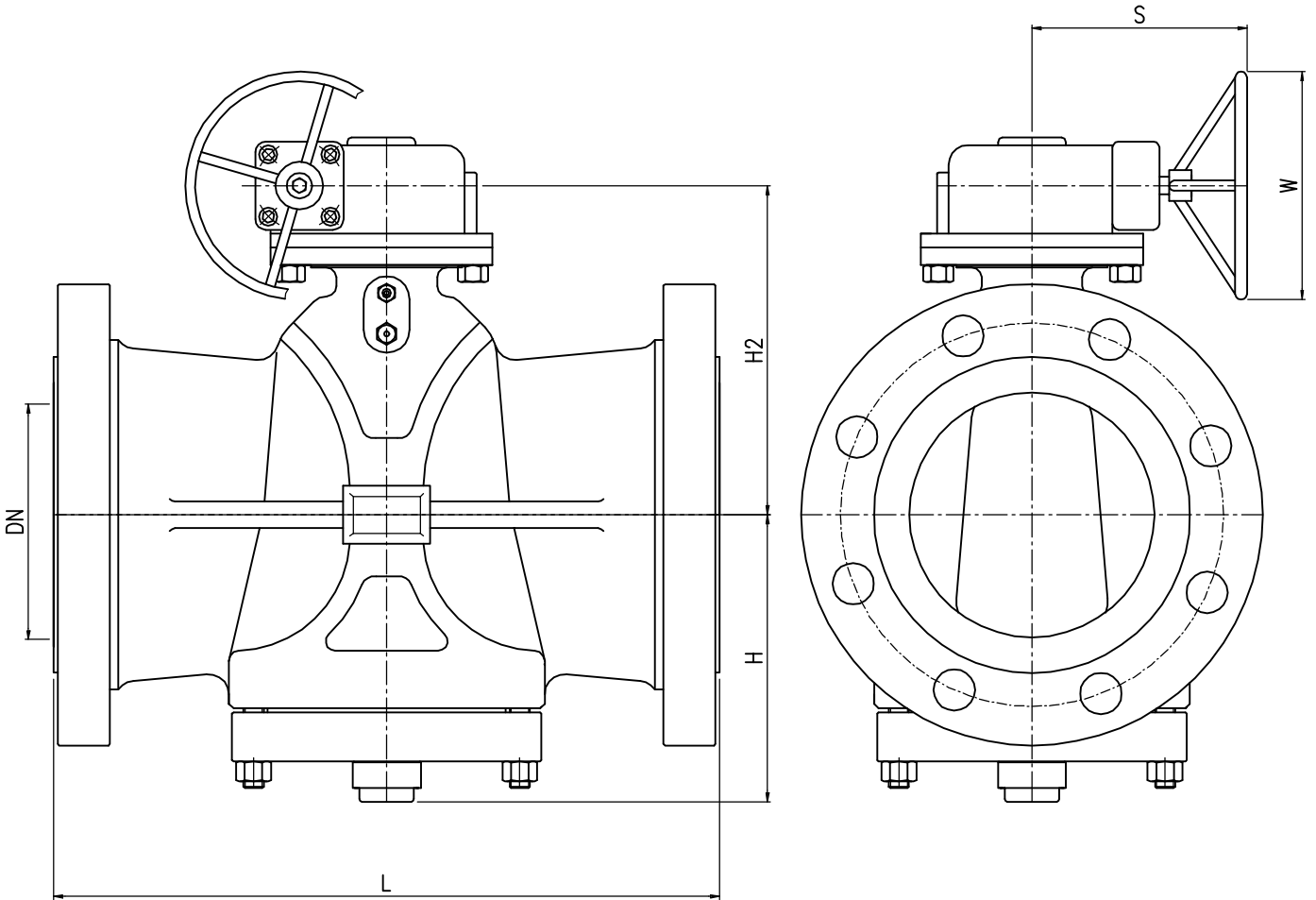
Denomination Lubricated Plug Valve Inverted Type
Venturi Pattern Dn 6"-12" Class 1500

Component OVERALL DIMENSIONS

Full-Filled PED Requirement					
Rev.	Dis.	Date	App.	Date	Description Review

Questo disegno è di proprietà di ENERGY VALVES è vietata qualsiasi riproduzione senza autorizzazione

NB	DN	Area	L			H	H2	S	W	Weight	
			RF	WE	RTJ					RF	WE
14"	350	40%	686	686	699	370	560	345	700	410	350
16"	400	40%	762	762	775	385	590	345	700	510	490
18"	450	40%	864	864	876	400	620	450	700	770	700
20"	500	40%	914	914	927	450	650	450	700	1050	950
24"	600	40%	1067	1067	1080	500	680	545	700	1750	1600



- NOTES:**
- Flanges in according with ANSI B.16.5
 - Butt welding end in according with ANSI B.16.25
 - Face to face dimensions according to API 6D spec.
 - Valves in according to API 6D spec. - API 599
 - Dimensions are in mm.
 - Estimated valve weight are in Kg.

ENERGY VALVES

Dwg. N° VMD-1424150V

Quote (mm) senza indicazione di tolleranza grado di precisione medio: UNI-EN 22768-1	Dis. D.R.J.	Date 10.01.09
da 0.5 a 6 oltre 6 a 30 oltre 30 a 120 oltre 120 a 400 oltre 400 a 1000 oltre 1000 a 2000	App. D.R.	Date 12.01.09
ALBERI Toll.+ Toll-	Draw A3	Scale 1:1
±0.1 ±0.2 ±0.3 ±0.5 ±0.8 ±1.2	Rev. 0	First Issue

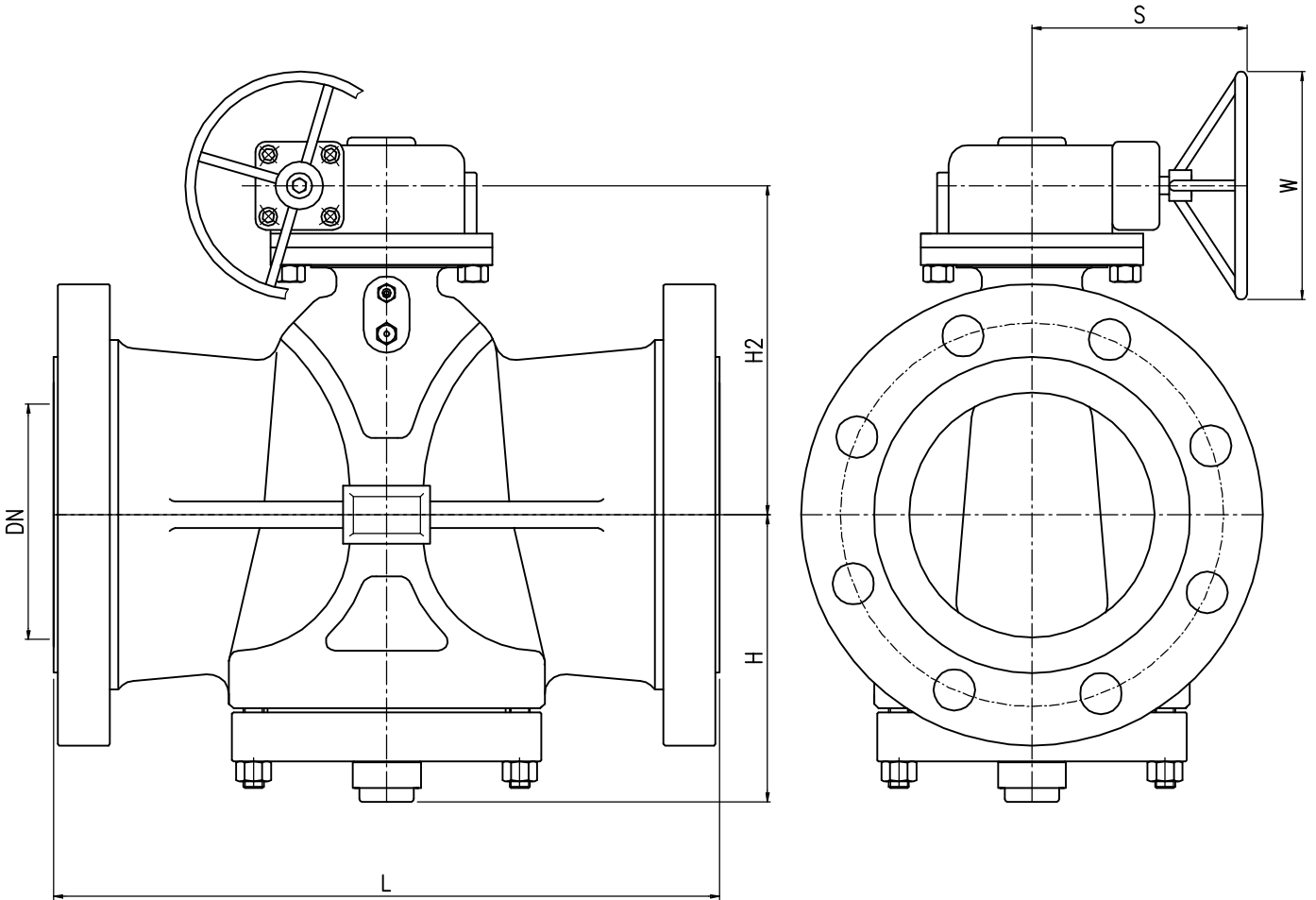
Denomination Lubricated Plug Valve Inverted Type
Venturi Pattern Dn 14"-24" Class 150

Component OVERALL DIMENSIONS

Full-Filled PED Requirement					
Rev.	Dis.	Date	App.	Date	Description Review

Questo disegno è di proprietà di ENERGY VALVES è vietata qualsiasi riproduzione senza autorizzazione

NB	DN	Area	L			H	H2	S	W	Weight	
			RF	WE	RTJ					RF	WE
14"	350	40%	762	762	778	370	560	345	700	510	430
16"	400	40%	838	838	854	385	590	345	700	670	590
18"	450	40%	914	914	930	400	620	450	700	920	800
20"	500	40%	991	991	1010	450	650	450	700	1250	1150
24"	600	40%	1143	1143	1165	500	680	545	700	2100	1850



NOTES:

- Flanges in according with ANSI B.16.5
- Butt welding end in according with ANSI B.16.25
- Face to face dimensions according to API 6D spec.
- Valves in according to API 6D spec. – API 599
- Dimensions are in mm.
- Estimated valve weight are in Kg.



Dwg. N° VMD-1424300V

Quote (mm) senza indicazione di tolleranza
grado di precisione medio: UNI-EN 22768-1

da	oltre	oltre	oltre	oltre	oltre	FOR:
0.5	6	30	120	400	1000	Toll.+
fino a	fino a	fino a	fino a	fino a	ALBERI:	Toll-
6	30	120	400	1000	2000	
±0.1	±0.2	±0.3	±0.5	±0.8	±1.2	

Dis. D.R.J. Date 10.01.09

App. D.R. Date 12.01.09

Draw A3 Scale 1:1

Rev. 0 First Issue

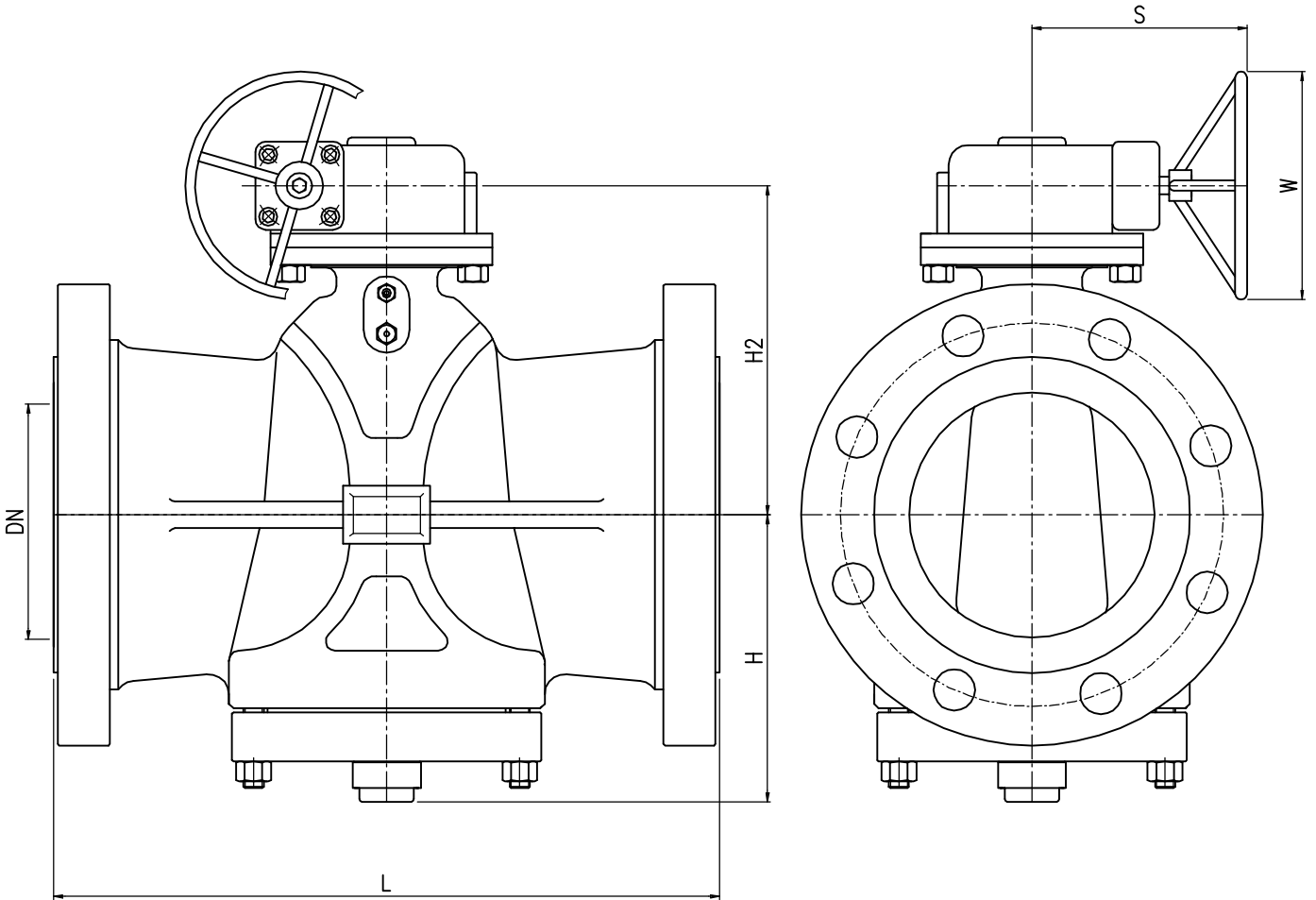
Full-Filled PED Requirement

Denomination Lubricated Plug Valve Inverted Type
Venturi Pattern Dn 14"-24" Class 300

Component OVERALL DIMENSIONS

Rev.	Dis.	Date	App.	Date	Description	Review
------	------	------	------	------	-------------	--------

NB	DN	Area	L			H	H2	S	W	Weight	
			RF	WE	RTJ					RF	WE
14"	350	40%	889	889	892	370	560	345	700	720	590
16"	400	40%	991	991	994	385	590	450	700	1120	730
18"	450	40%	1092	1092	1095	400	620	450	700	1450	1100
20"	500	40%	1194	1194	1200	450	650	545	700	2050	1440
24"	600	40%	1397	1397	1407	500	680	545	700	3500	2450



- NOTES:
- Flanges in according with ANSI B.16.5
 - Buttwelding end in according with ANSI B.16.25
 - Face to face dimensions according to API 6D spec.
 - Valves in according to API 6D spec. – API 599
 - Dimensions are in mm.
 - Estimated valve weight are in Kg.

ENERGY VALVES

Dwg. N° VMD-1424600V

Quote (mm) senza indicazione di tolleranza grado di precisione medio: UNI-EN 22768-1	Dis. D.R.J.	Date 10.01.09
da 0.5 a 6 oltre 6 oltre 30 oltre 120 oltre 400 oltre 1000	App. D.R.	Date 12.01.09
fino a 6 fino a 30 fino a 120 fino a 400 fino a 1000 fino a 2000	Draw A3	Scale 1:1
ALBERI Toll+ Toll-	Rev. 0	First Issue

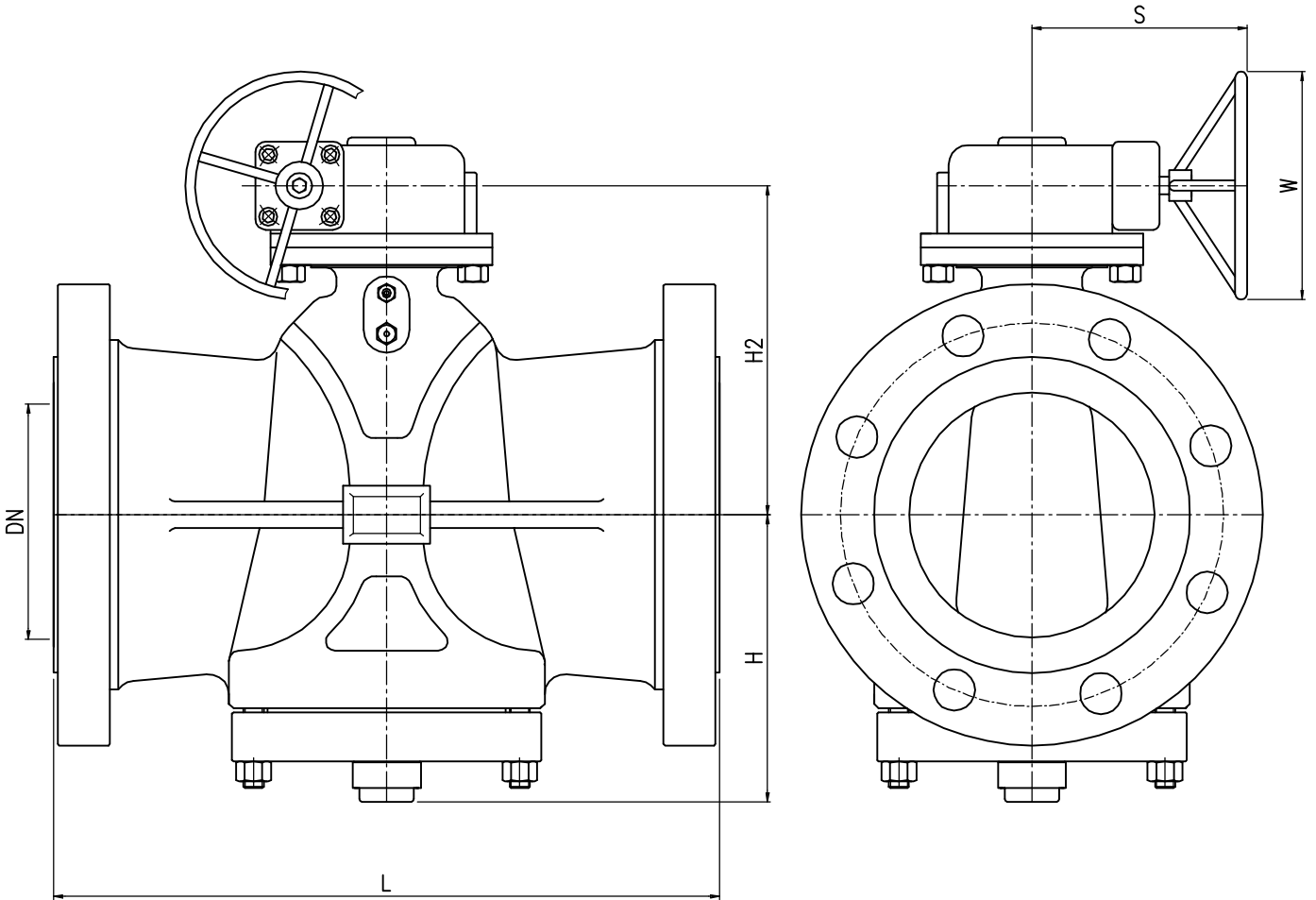
Denomination Lubricated Plug Valve Inverted Type
Venturi Pattern Dn 14"-24" Class 600

Component OVERALL DIMENSIONS

Full-Filled PED Requirement					
Rev.	Dis.	Date	App.	Date	Description Review

Questo disegno è di proprietà di ENERGY VALVES è vietata qualsiasi riproduzione senza autorizzazione

NB	DN	Area	L			H	H2	S	W	Weight	
			RF	WE	RTJ					RF	WE
14"	350	40%	1029	1029	1038	370	560	450	700	1350	1150
16"	400	40%	1130	1130	1140	385	590	450	700	1680	1400
18"	450	40%	1219	1219	1232	400	620	545	700	2650	2100
20"	500	40%	1321	1321	1334	450	650	545	700	3850	2750
24"	600	40%	1549	1549	1568	500	680	545	700	6750	4750



- NOTES:
- Flanges in according with ANSI B.16.5
 - Butt welding end in according with ANSI B.16.25
 - Face to face dimensions according to API 6D spec.
 - Valves in according to API 6D spec. - API 599
 - Dimensions are in mm.
 - Estimated valve weight are in Kg.

ENERGY VALVES

Dwg. N° VMD-1424900V

Quote (mm) senza indicazione di tolleranza
grado di precisione medio: UNI-EN 22768-1

da	oltre	oltre	oltre	oltre	oltre	FOR:
0.5	6	30	120	400	1000	Toll.+
fino a	fino a	fino a	fino a	fino a	ALBERI:	Toll-
6	30	120	400	1000	2000	
±0.1	±0.2	±0.3	±0.5	±0.8	±1.2	

Dis. D.R.J. Date 10.01.09

App. D.R. Date 12.01.09

Draw A3 Scale 1:1

Rev. 0 First Issue

Full-Filled PED Requirement

Denomination Lubricated Plug Valve Inverted Type

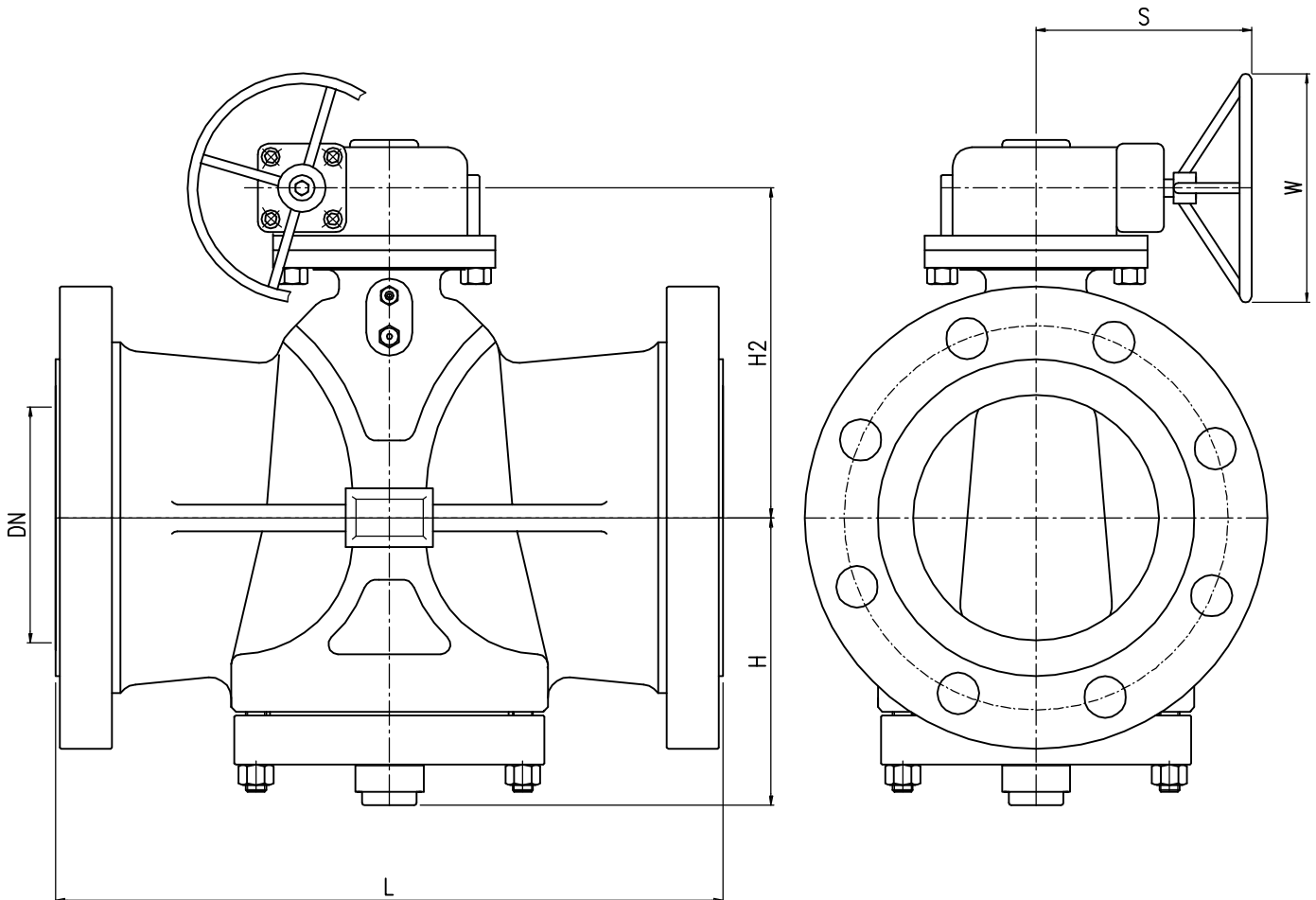
Venturi Pattern Dn 14"-24" Class 900

Component OVERALL DIMENSIONS

Rev.	Dis.	Date	App.	Date	Description	Review
------	------	------	------	------	-------------	--------

Questo disegno è di proprietà di ENERGY VALVES è vietata qualsiasi riproduzione senza autorizzazione

NB	DN	Area	L			H	H2	S	W	Weight	
			RF	WE	RTJ					RF	WE
14"	350	40%	1257	1257	1276	370	560	450	700	2700	2100
16"	400	40%	1384	1384	1407	385	590	450	700	3800	2850



- NOTES:
- Flanges in according with ANSI B.16.5
 - Buttwelding end in according with ANSI B.16.25
 - Face to face dimensions according to API 6D spec.
 - Valves in according to API 6D spec. – API 599
 - Dimensions are in mm.
 - Estimated valve weight are in Kg.

ENERGY
VALVES

Dwg. N° VMD-14161500V

Quote (mm) senza indicazione di tolleranza
grado di precisione medio: UNI-EN 22768-1

da	oltre	oltre	oltre	oltre	oltre	FOR:
0.5	6	30	120	400	1000	Toll.+
fino a	fino a	fino a	fino a	fino a	fino a	ALBERI:
6	30	120	400	1000	2000	Toll-
	±0.1	±0.2	±0.3	±0.5	±0.8	±1.2

Dis. D.R.J. Date 10.01.09

App. D.R. Date 12.01.09

Draw A3 Scale 1:1

Rev. 0 First Issue

Full-Filled PED Requirement

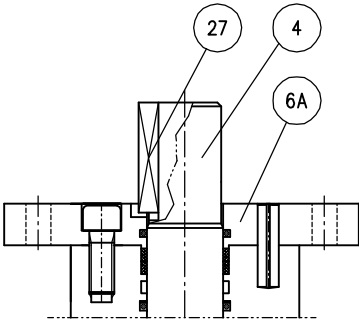
Denomination Lubricated Plug Valve Inverted Type
Venturi Pattern Dn 14"-16" Class 1500

Component OVERALL DIMENSIONS

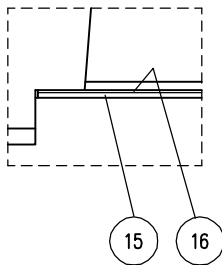
Rev.	Dis.	Date	App.	Date	Description	Review

Questo disegno è di proprietà di ENERGY VALVES è vietata qualsiasi riproduzione senza autorizzazione

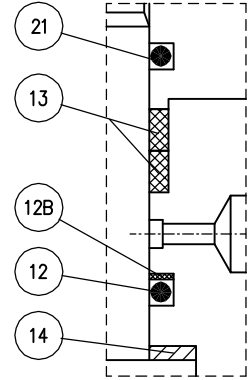
ADAPTER PLATE
For GEAR OPERATED



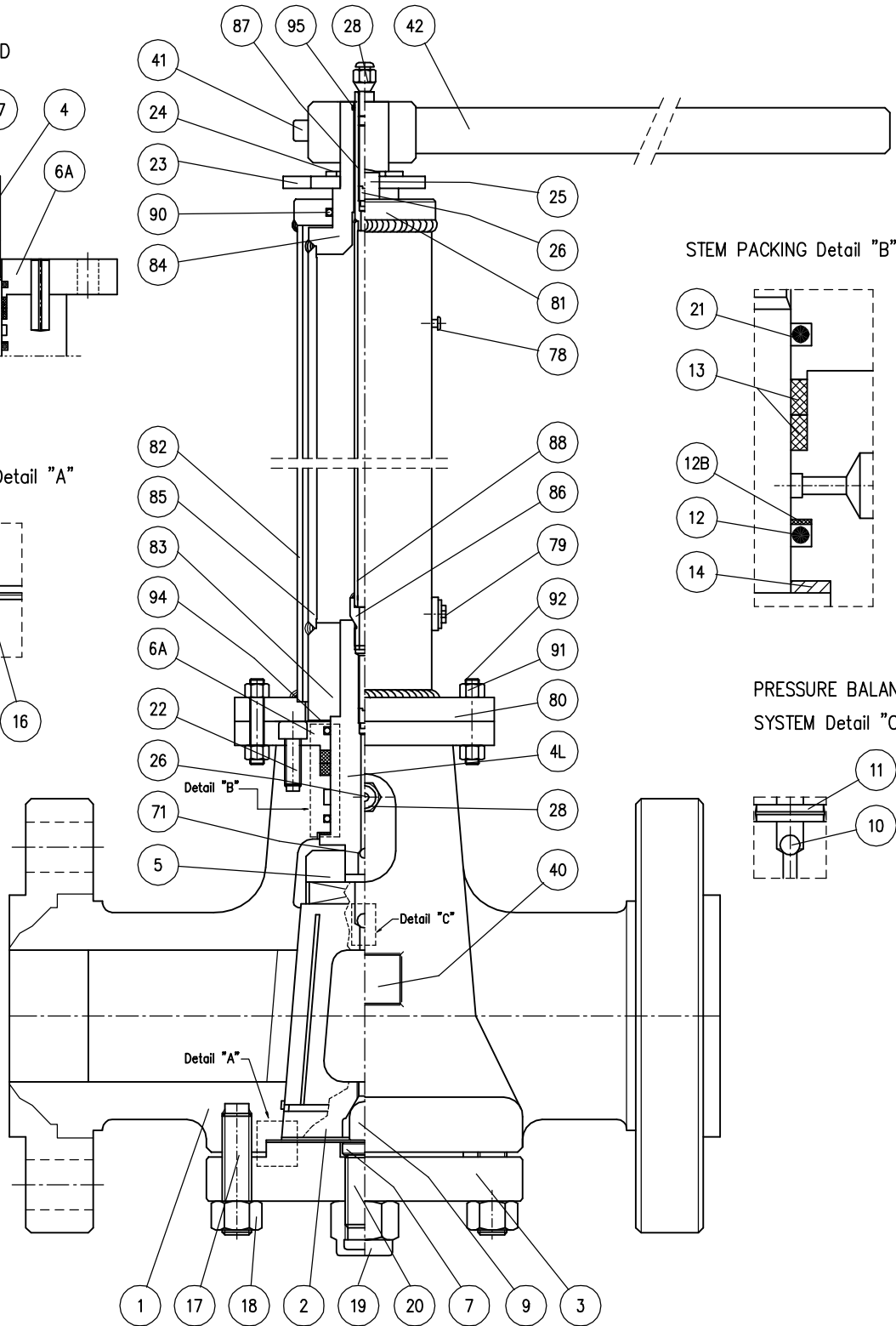
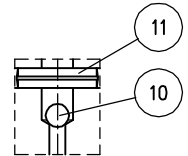
METALLIC MEMBRANE Detail "A"



STEM PACKING Detail "B"



PRESSURE BALANCE
SYSTEM Detail "C"



Dwg. N° VME-241501500

Quote (mm) senza indicazione di tolleranza
grado di precisione medio: UNI-EN 22768-1

da	oltre	oltre	oltre	oltre	oltre	FOR-
0.5	6	30	120	400	1000	Toll.+
fino a	fino a	fino a	fino a	fino a	fino a	Toll-
6	30	120	400	1000	2000	ALBERI
±0.1	±0.2	±0.3	±0.5	±0.8	±1.2	Toll-

Dis. D.R.J. Date 10.01.09

App. D.R. Date 12.01.09

Draw A3 Scale 1:1

Rev. 0 First Issue

Full-Filled PED Requirement

Denomination Lubricated Plug Valve Inverted Type

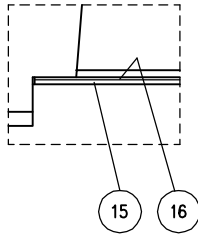
Extension - Dn 2"-4" Class 150 - 1500

Component ASSEMBLY DRAWING

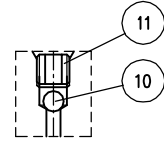
Rev.	Dis.	Date	App.	Date	Description	Review
------	------	------	------	------	-------------	--------

Questo disegno è di proprietà di ENERGY VALVES è vietata qualsiasi riproduzione senza autorizzazione

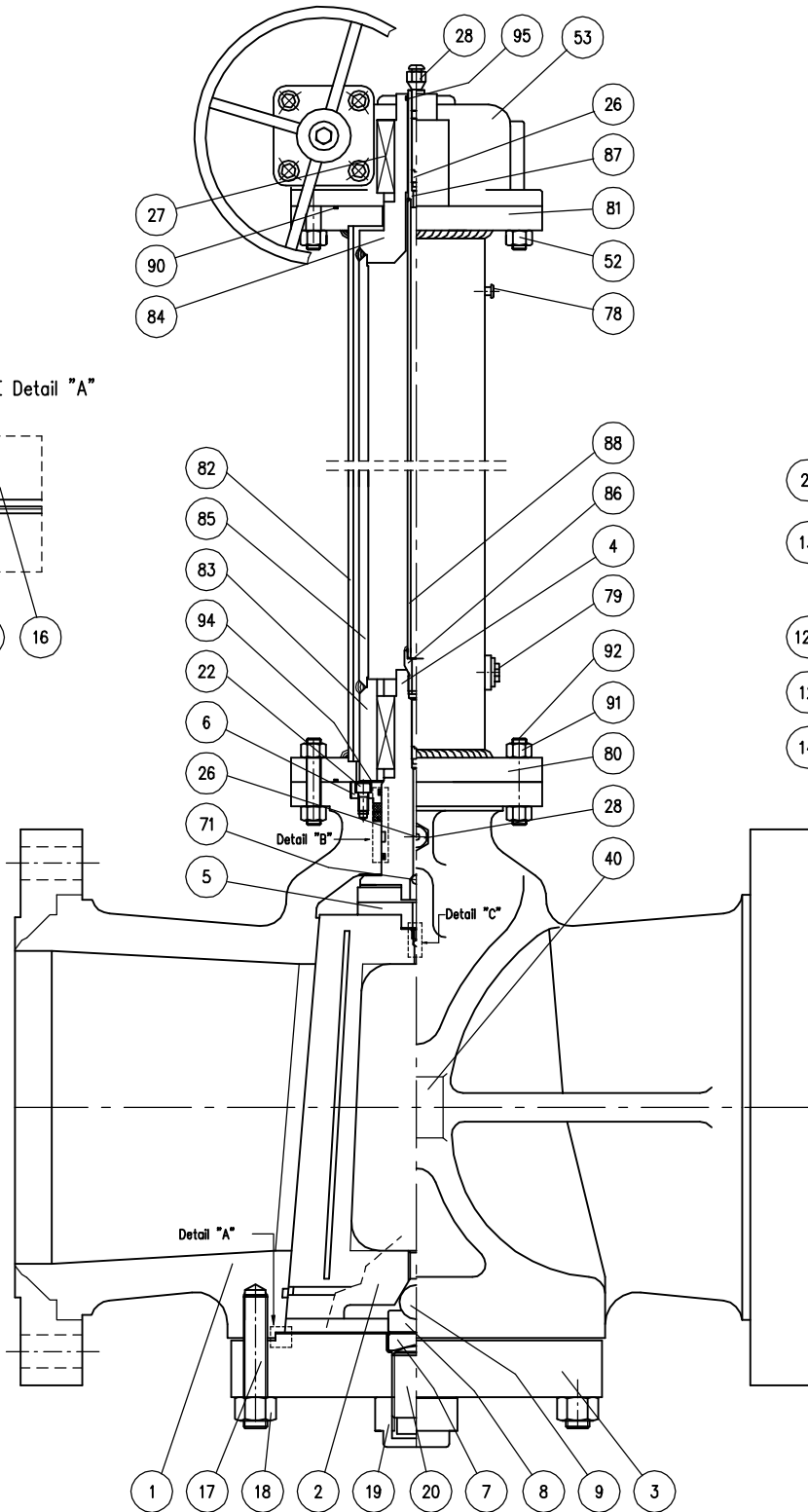
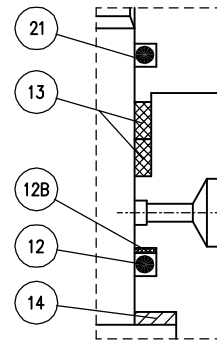
METALLIC MEMBRANE Detail "A"



PRESSURE BALANCE SYSTEM Detail "C"



STEM PACKING Detail "B"



ENERGY VALVES

Dwg. N° VME-6241501500

Quote (mm) senza indicazione di tolleranza
 grado di precisione medio: UNI-EN 22768-1
 da 0.5 a 6 oltre 6 a 30 oltre 30 a 120 oltre 120 a 400 oltre 400 a 1000 oltre 1000 a 2000
 fino a 6 a 30 a 120 a 400 a 1000 a 2000
 TOLL. ±0.1 ±0.2 ±0.3 ±0.5 ±0.8 ±1.2
 ALBERI TOLL.

Dis. D.R.J. Date 10.01.09

App. D.R. Date 12.01.09

Draw A3 Scale 1:1

Rev. 0 First Issue

Full-Filled PED Requirement

Denomination Lubricated Plug Valve Inverted Type

Extension - Dn 6"-24" Class 150 - 1500

Component ASSEMBLY DRAWING

Rev.	Dis.	Date	App.	Date	Description	Review

Questo disegno è di proprietà di ENERGY VALVES è vietata qualsiasi riproduzione senza autorizzazione

BILL OF MATERIALS

SERVICE : TEMPERATURE: -20 °C + 160°C STANDARD FLUID – CARBON STEEL TRIM – FIRE SAFE DESIGN

PART.N°	DESCRIPTION	MATERIAL	NOTE
01	BODY	ASTM A 216 WCB	
02	PLUG	ASTM A 105	Super LOMU Treatment
03	COVER	ASTM A 105	
04L	LEVER STEM	AISI 4140	
05	EQUALIZER RING	AISI 4140	
06	GLAND PLATE	ASTM A 105	
06A	ADAPTER PLATE	ASTM A 105	
07	THRUST BUTTON	AISI 1040	
08	LOWER BEARING PAD	AISI 4140	
09	BALL	AISI 4140	
10	BALL PRESSURE BALANCE	AISI 302	
11	PIN	C100	
12	STEM O-RING	VITON	
12B	STEM BACK-UP RING	NYLON	For Class 900 – 1500
13	PACKING	GRAPHITE	
14	THRUST BEARING	AISI 304/PTFE	
15	LOWER DIAPHRAGM	Fe 360 B	
16	UPPER DIAPHRAGM	AISI 304	
17	BODY STUDS	ASTM A 193 B7	
18	BODY NUTS	ASTM A 194 2H	
19	SCREW CAP	Class 5S	
20	ADJUSTING SCREW	AISI 1040	
21	GLAND PLATE O-RING	NITRILE	
22	GLAND PLATE CAP-SCREW	Class 8.8	
26	CHECK VALVE	AISI 304	
27	STEM KEY	AISI 4140	
28	GREASE FITTING	AISI 304	
40	NAME PLATE	AISI 304	
41	LEVER SCREW	Class 8.8	
42	WRENCH	Fe 510 B	
71	BALL	AISI 304	
78	VENT PLUG	AISI 304	
79	PLUG DRAIN	AISI 304	
80	LOWER FLANGE	Fe 510	
81	UPPER FLANGE	Fe 510	
82	YOKE PIPE	API 5L Gr.B	
83	DRIVE SLEEVE	Fe 510	
84	DRIVE SPUD	AISI 4140	
85	DRIVE PIPE	API 5L Gr.B	
86	GREASE FITTING NIPPLE	ASTM A 105	
87	GREASE FITTING SLEEVE	ASTM A 105	
88	GREASE PIPE	API 5L Gr.B	
90	FLANGE O-RING	NITRILE	
91	EXTENSION NUTS	ASTM A 193 B7	
92	EXTENSION STUDS	ASTM A 194 2H	
94	THRUST WASHER	NYLON	
95	O-RING	NITRILE	



Dwg. N° VMEB0-241501500

Quote (mm) senza indicazione di tolleranza grado di precisione medio: UNI-EN 22768-1	Dis. D.R.J.	Date 10.01.09
da 0.5 a 6 oltre 6 oltre 30 oltre 120 oltre 400 oltre 1000	App. D.R.	Date 12.01.09
ALBERI Toll- Toll+	Draw A3	Scale 1:1

Denomination Lubricated Plug Valve Inverted Type
Extension Dn 2"-4" Class 150 - 1500

Component BILL OF MATERIAL

Rev. 0 First Issue					
Full-Filled PED Requirement					
Rev.	Dis.	Date	App.	Date	Description Review

Questo disegno è di proprietà di ENERGY VALVES è vietata qualsiasi riproduzione senza autorizzazione

BILL OF MATERIALS

SERVICE : TEMPERATURE: -20 °C + 160°C STANDARD FLUID – CARBON STEEL TRIM – FIRE SAFE DESIGN

PART.N°	DESCRIPTION	MATERIAL	NOTE
01	BODY	ASTM A 216 WCB	
02	PLUG	ASTM A 105	Super LOMU Treatment
03	COVER	ASTM A 105	
04L	LEVER STEM	AISI 4140	
05	EQUALIZER RING	AISI 4140	
06	GLAND PLATE	ASTM A 105	
06A	ADAPTER PLATE	ASTM A 105	
07	THRUST BUTTON	AISI 1040	
08	LOWER BEARING PAD	AISI 4140	
09	BALL	AISI 4140	
10	BALL PRESSURE BALANCE	AISI 302	
11	PIN	C100	
12	STEM O-RING	VITON	
12B	STEM BACK-UP RING	NYLON	For Class 900 – 1500
13	PACKING	GRAPHITE	
14	THRUST BEARING	AISI 304/PTFE	
15	LOWER DIAPHRAGM	Fe 360 B	
16	UPPER DIAPHRAGM	AISI 304	
17	BODY STUDS	ASTM A 193 B7	
18	BODY NUTS	ASTM A 194 2H	
19	SCREW CAP	Class 5S	
20	ADJUSTING SCREW	AISI 1040	
21	GLAND PLATE O-RING	NITRILE	
22	GLAND PLATE CAP-SCREW	Class 8.8	
26	CHECK VALVE	AISI 304	
27	STEM KEY	AISI 4140	
28	GREASE FITTING	AISI 304	
40	NAME PLATE	AISI 304	
41	LEVER SCREW	Class 8.8	
42	WRENCH	Fe 510 B	
71	BALL	AISI 304	
78	VENT PLUG	AISI 304	
79	PLUG DRAIN	AISI 304	
80	LOWER FLANGE	Fe 510	
81	UPPER FLANGE	Fe 510	
82	YOKE PIPE	API 5L Gr.B	
83	DRIVE SLEEVE	Fe 510	
84	DRIVE SPUD	AISI 4140	
85	DRIVE PIPE	API 5L Gr.B	
86	GREASE FITTING NIPPLE	ASTM A 105	
87	GREASE FITTING SLEEVE	ASTM A 105	
88	GREASE PIPE	API 5L Gr.B	
90	FLANGE O-RING	NITRILE	
91	EXTENSION NUTS	ASTM A 193 B7	
92	EXTENSION STUDS	ASTM A 194 2H	
94	THRUST WASHER	NYLON	
95	O-RING	NITRILE	



Dwg. N°VMEBO-6241501500

Quote (mm) senza indicazione di tolleranza grado di precisione medio: UNI-EN 22768-1						
da	oltre	oltre	oltre	oltre	oltre	FORI- Toll.+
0.5	6	30	120	400	1000	
fino a	fino a	fino a	fino a	fino a	fino a	ALBERI- Toll-
6	30	120	400	1000	2000	
±0.1	±0.2	±0.3	±0.5	±0.8	±1.2	

Dis. D.R.J. Date 10.01.09

App. D.R. Date 12.01.09

Draw A3 Scale 1:1

Rev. 0 First Issue

Full-Filled PED Requirement

Denomination Lubricated Plug Valve Inverted Type

Extension Dn 6"-24" Class 150 - 1500

Component BILL OF MATERIAL

Rev.	Dis.	Date	App.	Date	Description	Review
------	------	------	------	------	-------------	--------

Questo disegno è di proprietà di ENERGY VALVES è vietata qualsiasi riproduzione senza autorizzazione

Global Supply Line Pty. Ltd. (Australia)

Major Stockist - Australia. Supplying World Wide

www.globalsupplyline.com.au