

# SFEROVA



APIQ1



0212230



ISO 9001



97/23/EC



Sferova SRL have been a trusted name around the world since 1972. Sferova manufacture forged steel trunnion mounted ball valves up to 900NB in Class 150 to 2500 and API up to 15,000PSI. Global Supply Line (GSL) are sole agents for Australia, New Zealand & Papua New Guinea. Sferova utilise the time proven B5/E2 design for it's split body 3 piece forged ball valve range. Sferova also manufactures top entry and welded body design ball valves as well as double block and bleed twin ball valves. Numerous majors are using Sferova worldwide.



Global Supply Line keep a large inventory of Sferova trunnion mounted ball valves from 150 class to 2500 class with features like PEEK seats, metal seats, Elast-O-Lion 985/ AED O-rings, Graphite seals etc. GSL has a fully equipped valve automation centre allowing us to fit all brands of actuators & controls in fast delivery.

- High quality forged construction, precision manufactured for long life and time proven as a reliable high quality product.
- Fast track delivery and factory back up of sub assembled stock.
- Fugitive Emission Prototype tested (floating & trunnion) 3rd party certified witnessed.
- Firesafe certified throughout entire range API6FA, API607 and ISO 10497-5.

Sferova also manufacture rack & pinnion piston style pneumatic actuators in a wide range of sizes up to 30,000 NM. Global Supply Line keeps a full range of Sferova actuators ex-stock.





# Sferova

## COMPANY PROFILE & QUALITY

Inspired by the mission of offering world-class solutions in the area of fluid handling, a group of young people with qualified experience in design and manufacture of industrial BALL VALVES is strongly working to develop a world-wide production system.

Since their establishment in 1972, SFEROVA have always been recognised for their high quality production of industrial BALL VALVES.

Today, SFEROVA is located just north of Milan and can draw upon a wealth of highly qualified and hugely experienced personnel.

State-of-the-art manufacturing facilities and modern quality management methods are employed in the production of process ball valves which are used in various applications such as Chemical Plants, Petrochemical, both on and offshore, Power Generation, Pharmaceutical and the Food industry.

SFEROVA ball valves are designed, produced and tested under an accredited Quality System in compliance with UNI-EN-ISO 9001, P.E.D. 97/23/EC and API Spec. Q1. Production is 100% tested in accordance with main international standards and special testing can be performed upon request.

SFEROVA ball valves can be certified to EN 10204 and supplied, when applicable, complete with CE marking and/or API Spec. 6D Monogram.



*Un team giovane e dinamico, ispirato dalla missione di offrire soluzioni a livello mondiale nel settore dell'intercettazione dei fluidi; personale qualificato da una lunga esperienza nella progettazione e produzione di VALVOLE a SFERA industriali.*

*Una società che lavora con impegno per rispondere alle nuove sfide del mercato internazionale. Fondata nel 1972, nelle immediate vicinanze della fiorente Milano, fin dalla sua nascita SFEROVA concentra e specializza la propria produzione sulle VALVOLE a SFERA.*

*Nel corso dei suoi 30 anni di esperienza SFEROVA ha raggiunto una posizione significativa nel campo delle valvole di processo trovando applicazione in tutti i settori dell'industria Chimica, Petrochimica, Energetica, Farmaceutica e Alimentare.*

*Tecnologie di produzione all'avanguardia e moderni sistemi gestionali, assicurano processi produttivi efficienti, garantendo elevati standard qualitativi per la completa gamma di valvole.*

*Le valvole a sfera SFEROVA sono progettate, prodotte e collaudate secondo un Sistema di Qualità accreditato in accordo alla ISO 9001, P.E.D. 97/23/EC e d API Spec. Q1.*

*La produzione viene collaudata al 100% in accordo alle più diffuse normative internazionali e collaudi speciali possono essere effettuati su richiesta.*

*Le valvole a sfera SFEROVA possono essere certificate in accordo alla EN 10204, e fornite, quando applicabile, complete di marcatura CE e/o Monogramma API Spec. 6D.*

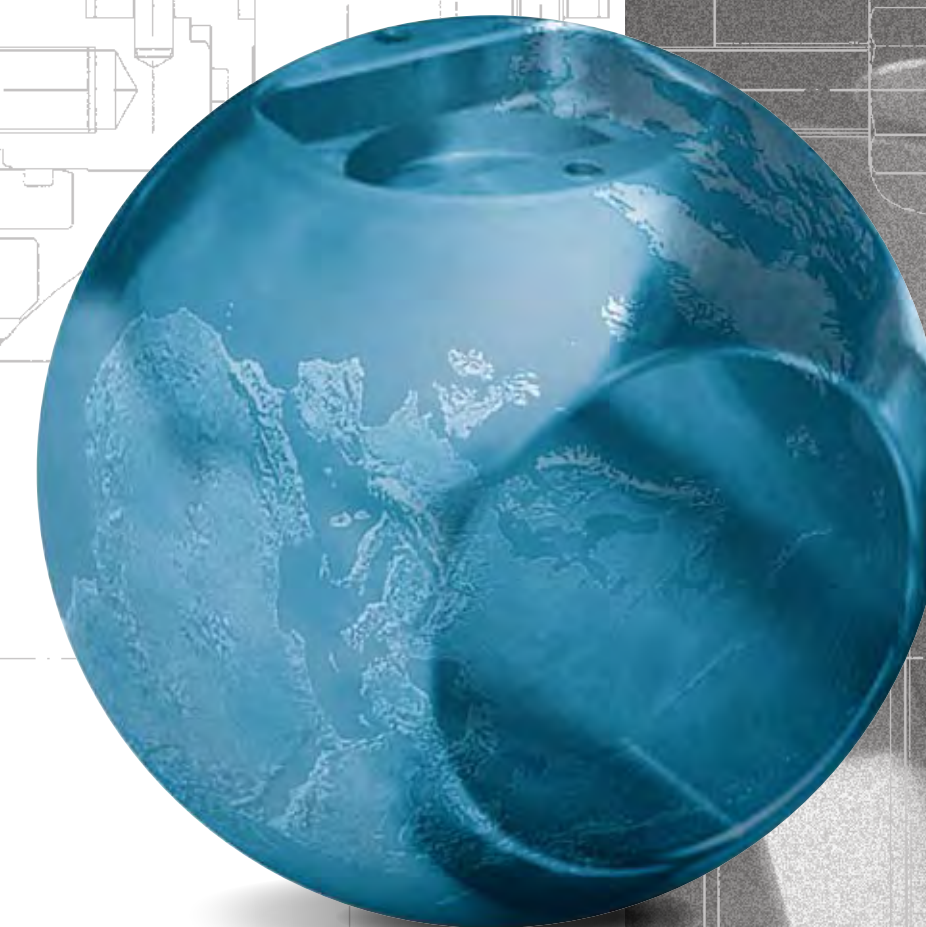


Head Office and Factory:

**Sferova s.r.l.**  
Via delle Industrie, 30/32  
I-20050 Sulbiate (MI)-Italy  
Tel. +39 039 6079599  
Fax +39 039 6079582  
[www.sferova.com](http://www.sferova.com)  
[info@sferova.com](mailto:info@sferova.com)



# SFEROVA



Valvole a sfera  
Ball valves



# Valvole a sfera Ball valves



## TQ2 Split body floating ball valves



- Split body floating ball valves. Two or three piece bolted body, with flanged ends to ASME B16.5, welded ends to ASME B16.25 or clamp type, and face to face to ASME B16.10. Full or reduced bore. Design and construction in accordance with ASME B16.34, API 6D and ISO 17292. Fire Safe certified to BS 6755 Part 2 and API 6FA. Antistatic device and antiblow-out stem.
- Valvole a sfera floating tipo split body. Corpo imbullonato in due o tre pezzi, con estremità flangiate ASME B16.5 e scartamento ASME B16.10. Passaggio totale o ridotto. Progettate e costruite in accordo alla ASME B16.34, API 6D e ISO 17292. Certificate Fire Safe BS 6755 Parte 2 e API 6FA. Dispositivo antistatico e stelo anti espulsione.

TIPO/TYPE	DN/SIZE	CLASSE/CLASS
<b>TQ2</b>	½" to 8"	ANSI 150 to 2.500 API 2.000 to 15.000

**Materials - Materiali:**  
Carbon steel, stainless steel, duplex, super-duplex, special alloys, titanium.

## TM3 Side entry trunnion mounted ball valves



- Split body trunnion mounted ball valves. Two or three piece bolted body, with flanged ends to ASME B16.5, welded ends to ASME B16.25 or clamp type, and face to face to ASME B16.10. Full or reduced bore. Design and construction in accordance with ASME B16.34, API 6D and ISO 17292. Fire Safe certified to BS 6755 Part 2 and API 6FA. Antistatic device and antiblow-out stem.
- Valvole a sfera trunnion tipo split body. Corpo imbullonato in due o tre pezzi, con estremità flangiate ASME B16.5 e scartamento ASME B16.10. Passaggio totale o ridotto. Progettate e costruite in accordo alla ASME B16.34, API 6D e ISO 17292. Certificate Fire Safe BS 6755 Parte 2 e API 6FA. Dispositivo antistatico e stelo anti espulsione.

TIPO/TYPE	DN/SIZE	CLASSE/CLASS
<b>TM3</b>	from ½" to 32"	ANSI 150 to 2.500 API 2.000 to 15.000

**Materials - Materiali:**  
Carbon steel, stainless steel, duplex, super-duplex, special alloys, titanium

## IGI Metal to metal floating and trunnion mounted ball valves



- Split body metal seated floating and trunnion ball valves for services in extreme both high and low temperatures, abrasive or corrosive. Two or three piece bolted body with flanged ends to ASME B16.5, welded ends to ASME B16.25 or clamp type, and face to face to ASME B16.10. Full or reduced bore. Design and construction in accordance with ASME B16.34, API 6D and ISO 17292. Fire safe certified to BS 6755 Part 2, API 6FA and API 607. Antistatic device and antiblow-out stem.
- Valvole a sfera floating e trunnion, tipo split body, metal to metal per impiego a temperature estremamente alte o basse, abrasivo o corrosivo. Corpo imbullonato in due o tre pezzi, con estremità flangiate ASME B16.5 e scartamento ASME B16.10. Passaggio totale o ridotto. Progettate e costruite in accordo alla ASME B16.34, API 6D e ISO 17292. Certificate Fire Safe BS 6755 Parte 2, API 6FA e API 607. Dispositivo antistatico e stelo anti espulsione.

TIPO/TYPE	DN/SIZE	CLASSE/CLASS
<b>IGI-F</b>	½" to 32"	ANSI 150 to 2.500
<b>IGI-T</b>	2" to 32"	API 2.000 to 15.000

**Materials - Materiali:**  
Carbon steel, stainless steel, duplex, super-duplex, special alloys, titanium

## TEV Top entry trunnion mounted ball valves



- Forged or cast material engineered for heavy duty, maintenance-free performance. Flanged ends to ASME B16.5, welded ends to ASME B16.25 or clamp type, face to face to ASME B16.10. Design and construction in accordance to ASME B16.34, API 6D and ISO 17292. Fire safe certified to API 607. Vent and drain connections as requested by international standard or customer specifications.
- Forgiate o fuse, progettate per impieghi gravosi e senza bisogno di interventi di manutenzione. Estremità flangiate in accordo alle ASME B16.5, saldate in accordo alle ASME B16.25 o con attacchi tipo "clamp", scartamento ASME B16.10. Costruite in accordo alle ASME B16.34, API 6D e ISO 17292. Certificate FIRE SAFE in accordo alle API607.

TIPO/TYPE	DN/SIZE	CLASSE/CLASS
<b>TEV</b>	2" to 24"	ANSI 150 to 2.500 API 2.000 to 15.000

**Materials - Materiali:**  
Carbon steel, stainless steel, duplex, super-duplex, special alloys, titanium

## DBB Double block and bleed floating and trunnion mounted ball valves



- Double block and bleed, valves, floating and trunnion mounted ball design. Flanged, welded, clamp type ends. Design and construction according to international standards or customer specifications.
- Valvole a sfera floating e trunnion, tipo "double block and bleed". Estremità flangiate con attacchi tipo "clamp". Progettazione e costruzione in accordo alle norme internazionali di riferimento ed in accordo alle specifiche del cliente.

TIPO/TYPE	DN/SIZE	CLASSE/CLASS
<b>DBB</b>	according to customer specifications	ANSI 150 to 2500 API 2.000 to 15.000

**Materials - Materiali:**  
Carbon steel, stainless steel, duplex, super-duplex, special alloys, titanium

## CRY Cryogenic ball valves floating and trunnion mounted design



- Floating and trunnion mounted ball valves, with extended bonnet, materials and seals specifically engineered and tested to suit cryogenic applications.
- Valvole a sfera floating e trunnion con stelo allungato. I materiali impiegati e le guarnizioni sono specificatamente progettati e testati per soddisfare gli impieghi nel settore criogenico.

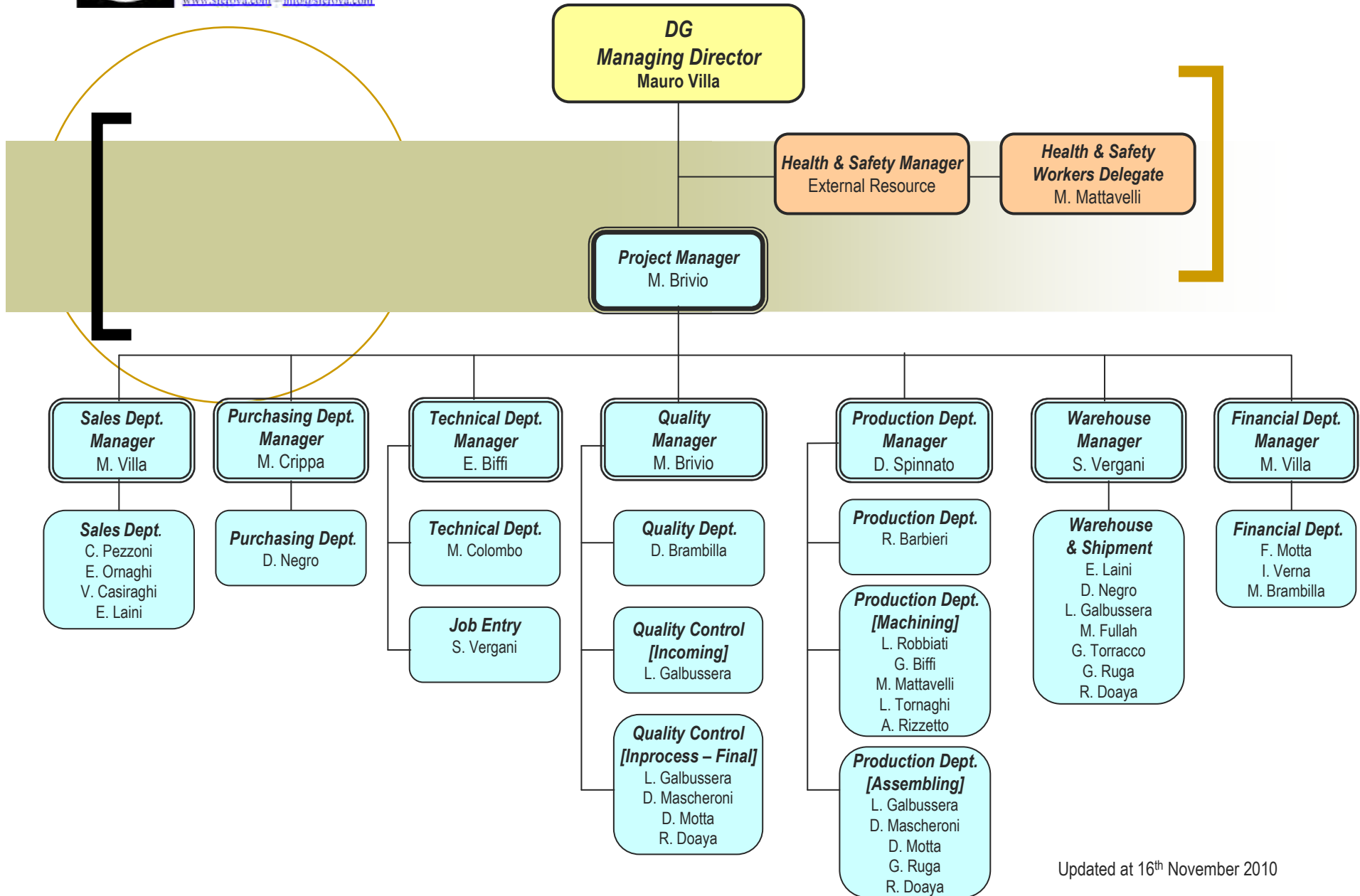
TIPO/TYPE	DN/SIZE	CLASSE/CLASS
<b>CRY</b>	½" to 32"	ANSI 150 to 2.500 API 2.000 to 15.000

**Materials - Materiali:**  
To suit service conditions



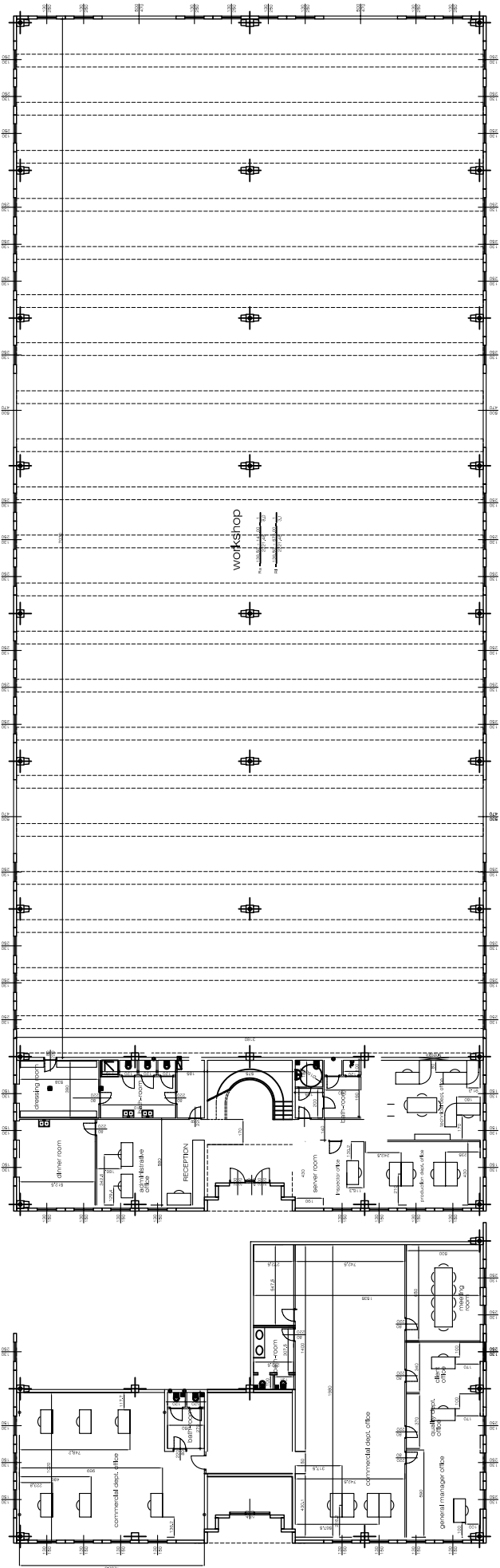
**SFEROVA S.r.l.**

Via delle Industrie, 30/32  
20050 SULBIATE - MI - ITALY  
Tel. 039-6079599 Fax 039-6079582  
[www.sferova.com](http://www.sferova.com) - [info@sferova.com](mailto:info@sferova.com)



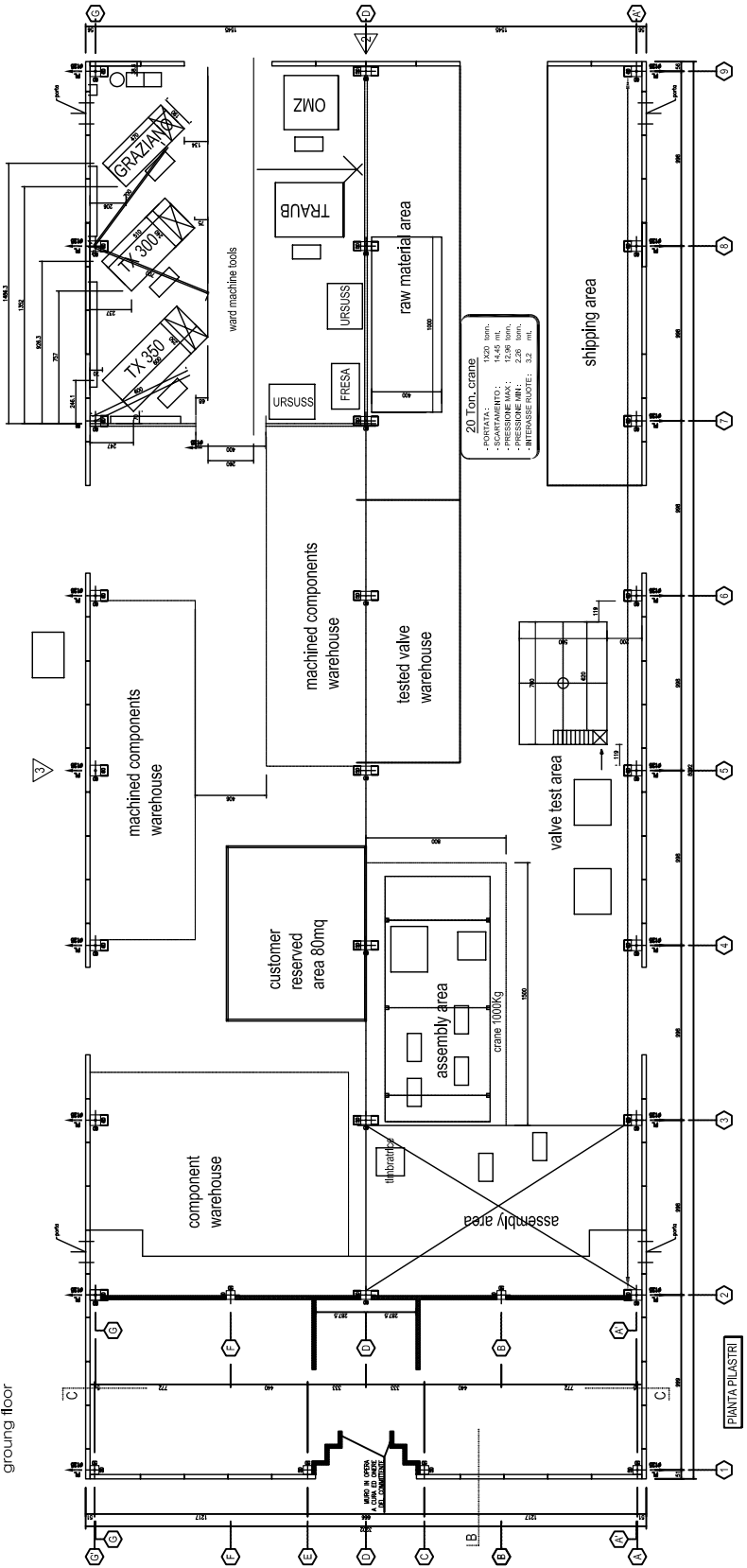
Updated at 16<sup>th</sup> November 2010





ground floor

first floor



3					
2					
1					
REV.		DESCRIPTION	MODIFIED	PASSED	DATE
DATE:	11-01-10	DRAFT:	PASSED	SCALE:	1:1
VALVE TYPE:	SIZE:	CLASS:	TOLERANCE:	ROUGHNESS:	
			UNI EN 22768-mk	UNI ISO 1302-Ra3.2	
PART NAME:	SFEROVA PLANT LAY OUT		PLANT-01-2010-00		
MATERIAL:	WEIGHT:				
CUSTOMER:					
ORDER NO:	Sferova s.r.l. via delle Industrie 30/32 20050 Sulbiate (MB)-I Tel: 039-6079599 Fax: 039-6079582 E-mail: info@sferova.com Url: www.sferova.com				
SFEROVA REF.:	<small>THIS DRAWING IS PROPERTY OF SFEROVA S.R.L. RIGHTS OF USE AND REPRODUCTION ARE RESERVED TO SFEROVA S.R.L. SFEROVA A TERMI DI LEGGE LA PROPRIETA' DEL PRESENTE DISEGNO</small>				



## RESOURCES EQUIPMENT AND FACILITIES

List of machinery / CNC machines as per below table:

Machine Name	Manufacture	Make	Model	Capacity	Quantity
Vertical automatic stock room	Stock	RFT	01/08	110 cells 56cm x 33cm x 28cm	1
CNC machining centre	Machining	OMZ	300	410mm	1
CNC machining centre	Machining	TRAUB	Gloria	400mm	1
CNC lathe machine	Machining	IMTS	TX 350	480mm	1
CNC lathe machine	Machining	IMTS	TX 300	320mm	1
CNC lathe machine	Machining	GRAZIANO	GT 500	250mm	1
Milling machine	Machining	ADCOCK-SHIPLEY BRIDGEPORT	A-52-2	250mm	1
Lathe	Machining	CMT	Ursus 250	500mm	1
Lathe	Machining	CMT	Ursus 225	450mm	1
Band saw	Machining	FERMI	783	85mm	1
Band saw	Machining	FORTE	SBA 341/S	360mm	1
Marking machine	Marking	AUTOMATOR	TMP6000	n/a	1
Marking machine	Marking	SIMET	PMS-V5-HP-HEAD	n/a	1
Materials analyzer	P.M.I.	NITON	XIt 898SW	Main ferrous and non-ferrous alloys	1
Helium leak detector + sniffer	Testing	ESA	Phoenix XL300	10÷50000sccm; 150psig; ≤10 <sup>-9</sup> scc/secHe; ≤10 <sup>-7</sup> scc/secHe	1
Pressure test bench	Testing	PASQUALI	20T	20T	1
Pressure test bench	Testing	ITALCONTROL	VTS-60	60T	1
Pressure test bench	Testing	ITALCONTROL	HTS-800	800T	1
Pressure test bench	Testing	ITALCONTROL	SVA-60-B-W350	50T	1
Cryogenic test bench	Testing	ITALCONTROL	HTS-140	140T	1
Booster	Testing	MAXIMATOR	DLE 30-75-2-GU	21750psi; 1:150	1
Semi-automatic packing machine	Packing	FILMA	FP ECO CP30	Europallet	1
Jib crane	Lifting	DEMAG - MANNESMAN		125Kg	1
Jib crane	Lifting	BRENNA		250Kg	1
Jib crane	Lifting	BRENNA		125Kg	1
Jib crane	Lifting	DEMAG		125Kg	1
Jib crane	Lifting	BONFANTI / DONATI		200Kg	1
Crane	Lifting	KONECRANES		1T	1
Double girder bridge crane	Lifting	BONFANTI / DONATI		20T	1
Forklift	Lifting	PRAMAC	GX 12/35 Plus	1,2T	1
Forklift	Lifting	CTC	Planet 425	2,5T	1



**SFEROVA s.r.l.**

Via delle industrie, 30/32  
20050 SULBIATE- MI - ITALY  
Tel. 039-6079599 Fax 039-6079582  
E-MAIL: [info@sferova.com](mailto:info@sferova.com)



6D-0290



## BALL VALVES

### Main Subcontractors

FLAME SPRAY SPA (Tungsten carbides or Chromium carbides coating)  
PRAXAIR SURFACE TECHNOLOGIES (Tungsten carbides or Chromium carbides coating)  
GASKET INTERNATIONAL SPA (balls & seats)  
GUARNIFLON SPA (seats)  
FLUORTEN SRL (seats)  
GUIN TECHNOLOGY SRL (seatings)  
JAMES WALKER ITALIANA SRL (o.rings)  
OLDRATI SPA (o.rings)  
SAINT-GOBAIN (lip seals)  
ACCIAIERIE VALBRUNA SPA (raw material)  
C.V.A. NICRORAM SRL (raw material)  
CHUN & VOLLERING SRL (raw material)  
IMS SPA (raw material)  
INOXFUCINE SPA (raw material)  
SANDVIK ITALIA SPA (raw material)  
TERNINOX SPA (raw material)  
TITALIA SRL (raw material)  
FORGIATURA MODERNA ARESE SPA (raw material)  
LOTERIOS SPA (raw material)  
FLOWERVE SPA (actuators)  
BIFFI ITALIA SRL (actuators)  
AUMA ITALIANA SRL (actuators)  
SOLDO SRL (automation)  
ROTORK ITALIA (actuators)  
ROTORK FLUIDSYSTEM (actuators)  
PRO CONTROL (actuators)  
O.M.E. METALLURGICA ERBESE SRL (bolting)  
PRESS BOLT SRL (bolting)  
BURAGO VITI SRL (bolting)  
BOLA-TEK MFG (balls)  
CUM SRL (gear operators)  
LENA ANTICORROSIONE SRL (painting)  
UBOLDI (painting)  
FAI OFFICINE DI CARVICO SPA (welding)  
I.M.B. INDUSTRIA MECCANICA BASIANO SRL (machining)  
NANA MECCANICA SNC (machining)  
QUALITY CONTROL SRL (NDE)  
SHAH PRECAST (castings)  
INOVATIVE TECHNOCAST / INOVA (castings)

[www.globalsupplyline.com.au](http://www.globalsupplyline.com.au)

*Global Supply Line Pty Ltd Australia  
Largest Sferova Stockist in the World  
Supplying Worldwide*

*(view our online stockists at our website)*



**SFEROVA s.r.l.**