

JC VALVES®

6000 SERIES FORGED SIDE ENTRY BALL VALVE

DESIGN FEATURES

- Manufactured and tested to API 6D
- 3 piece Side Entry type
- Full Bore - Full through conduit - Piggable
- Manual operation - Gear
- Trunnion mounted
- Stem separate from the ball, anti-blow-out design
- No side load on the stem. Bearing blocks absorb the pressure load on the ball
- Triple barrier stem seals
- Anti blow-out stem configuration
- Metal seat retainer complete with replaceable soft insert
- O-ring for static (body joints) and dynamic (seat rings and stem) seals
- Self-relieving seat design feature
- Anti-static device
- Sealant injection
- Fire safe design in accordance with ISO 10497
- Fugitive emission certified ISO - EN 15848-1
- SIL3 certified

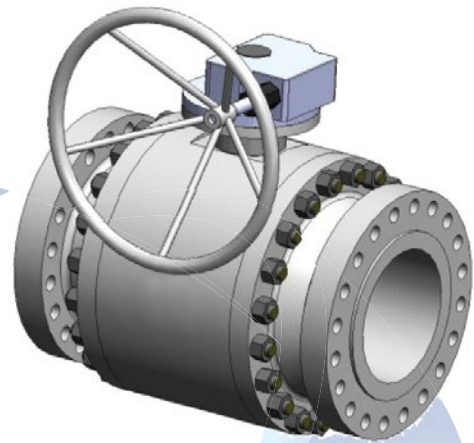


Figure 1: 6000 Series Side Entry Ball Valve shown with Gear Operator





TECHNICAL OVERVIEW SHEET

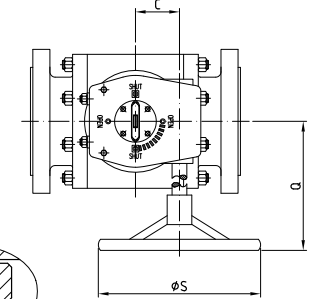
PROJECT		Stock Order	
		Global Supply Line	
		Australia	
LINE		SPECIFICATIONS	
1	VALVE DESCRIPTION	3-Piece Ball Side Entry Trunnion Bolted Bonnet	
2	VALVE MODEL NO.	6000 Series Ball Valve Side Entry	
3			
4			
5			
6	PRESSURE CLASS	Refer to drawing	
7	BORE (FULL/REDUCED)	Refer to drawing	
8	END CONNECTIONS	Refer to drawing	
9	OPERATION (MANUAL/ACTUATED)	Refer to drawing	
10	GEARBOX (WHERE APPLICABLE)	Rotork/Mastergear	
11	SEAT CONFIGURATION	Self-Relieving	
12	ANTI BLOWOUT STEM DESIGN (YES/NO)	Yes	
13	ANTI STATIC DEVICE (YES/NO)	Yes	
14	VENT/DRAIN FITTING	NPT Plug and Bleed Valve - as per API 6D	
15	FIRE SAFE DESIGN & TESTING (YES/NO - SPEC)	Yes - ISO 10497	
16			
17	VALVE MATERIALS OF CONSTRUCTION		
18	BODY	Refer to drawing	
19	CLOSURE	Refer to drawing	
20	STEM	Refer to drawing	
21	BALL	Refer to drawing	
22	SEATS	Refer to drawing	
23	SEAT INSERT	Refer to drawing	
24	SEAT SPRINGS	INCONEL X750	
25	OTHER SEALS	Graphite/Viton AED FR58-90*	
26	BOLTING	Refer to drawing	
27	STEM GREASE FITTING	Yes	
28	SEAT SEALANT INJECTION FITTING	Yes	
29			
30		*OR EQUIVALENT EUROPEAN O-RING MANUFACTURER, L.O.C SUPPLIED	
31	VALVE DESIGN LIMITS		
32	TEMPERATURE	Refer to drawing	
33	PRESSURE	Refer to drawing	
34	DIFFERENTIAL PRESSURE (MAX.)	Not Available	
35			
36	TESTING		
37	REFERENCED SPECIFICATION	(ISO 14313 Rate A)	
38	OTHER TEST/INSPECTION CONDUCTED	3rd Party Witness - SGS Barcelona	
39			
40	CERTIFICATION		
41	PRESSURE RETAINING PARTS		
42	- BODY, BONNET, CLOSURE	EN 10204 3.1	
43	- STEM	EN 10204 3.1	
44	- BOLTING [†]	EN 10204 3.1	
45	PRESSURE CONTROLLING PARTS		
46	- SEATS	EN 10204 3.1	
47	- BALL	EN 10204 3.1	
48			
49		[†] ALL B7, B7M, L7, L7M BOLTING IS GALVANISED.	
50	CLARIFICATIONS/QUALIFICATIONS:		
51			
52	1) All valves are provided with locking devices on their individual operators.		
53	2) Valves are designed with capability for double block and bleed operation/function.		
54	3) Vent and drain connections include bleed valve.		
55	4) Valve body cavity pressure can be released during open and close position.		
56	5) Gear box's cover screw shall be accessible from the top.		
57	6) Firesafe ISO 10497 certification is equivalent to API 6FA/API607 v5/BS 6755 Pt. 2.		
58	7) All external fixtures, i.e. seal injection, drain & bleed plug are full 316SS.		
59			
60			
	PREPARED BY	CHECKED BY	REV. NO.
	BT	AS	01

SAMPLE DRAWING

DN	L	ØD	ØP	A	ØR	f	H	h	h1	N	C	Q	ØS	Rotork	Weight	ITEM	TAG	QUANTITY
16"	994	685	387	497	508	7.92	870	490	80	504	170	510	600	AB6800/SP4	2686	184	BV796	1

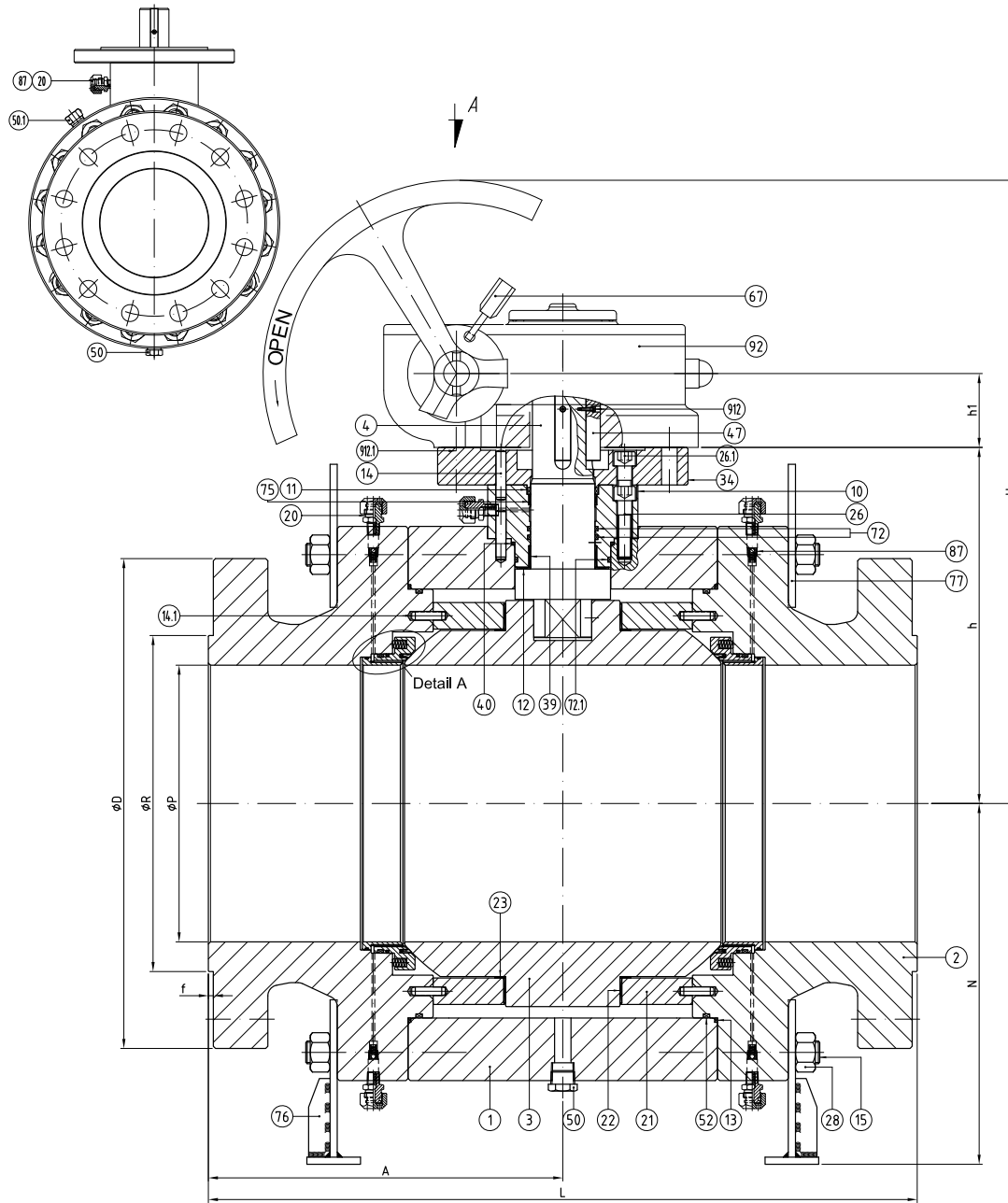
- Firesafe certified API607 5th edition/ISO 10497-2010
- NACE MR0175
- Double block and bleed capable
- Self relieving seats
- Design API 6D & ANSI B16.34
- Test to API 6D
- Dimensions to ANSI B16.10
- Flanging to ANSI B16.5

View A

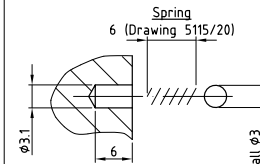


MANUFACTURED IN SPAIN
(*) RECOMMENDED SPARE PARTS

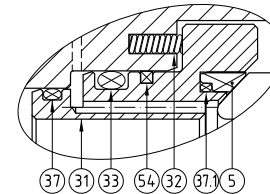
8042



Antistatic Detail



Detail A



POS.	QUAN.	DENOMINATION	MATERIAL	DRAWING N°.
	2	PLASTIC CAP	PLASTIC	
912.1	4	BOLT	A2 STAINLESS STEEL	
912	2	BOLT	A2 STAINLESS STEEL	
92	1	WORM GEAR	ROTORK AB SERIES	
89	1	IDENTIFICATION PLATE	A 276 Tp.304	
87	5	CHECK VALVE	AISI 316	
77	4	LUG	S 235 JO	
76	2/2	SUPPORT	S 235 JO	
75	1	STEM BUSHING	AISI-316 WITH INSIDE IN PTFE	*
72.1	1	*O* RING	VITON AED	*
72	2	*O* RING	VITON AED	*
67	1	PADLOCK	BRASS	
54	2	SEAT CARRIER SEAL	GRAPHITE	*
52	2	*O* RING	VITON AED	*
50.1	1	VENT PLUG	AISI 316	
50	1	DRAIN PLUG	AISI 316	
47	2	KEY	St. 60	
40	1	GASKET	GRAPHITE	*
39	1	STEM BUSHING	AISI-316 WITH INSIDE IN PTFE	*
37.1	2	*O* RING	VITON AED	*
37	2	*O* RING	VITON AED	*
34	1	UPPER CAP	A 350 Gr. LF2 Class-1	*
33	2	SEAT SEAL	VITON AED	*
32	40	SPRING	INCONEL X-750	*
31	2	SEAT CARRIER	A 182 Gr.F6a	*
28	64	NUT	A 194 Gr. 7M GALVANIZED	
26.1	4	BOLT	A 320 Gr. L7M GALVANIZED	
26	4	BOLT	A 320 Gr. L7M GALVANIZED	
23	2	BEARING	PTFE	*
22	2	TRUNNION BEARING	AISI-316 WITH INSIDE IN PTFE	*
21	2	BALL TRUNNION	A 182 Gr.316	
20	5	INJECTION FITTING	AISI 316	
15	64	STUD	A 320 Gr. L7M GALVANIZED	
14.1	4	STOP PIN	100Cr6	
14	4	STOP PIN	100Cr6	
13	2	BODY CONNECTOR SEAL	GRAPHITE	*
12	1	STEM THRUST SEAL	25% GF. + PTFE	*
11	1	GLAND PACKING	GRAPHITE	*
10	1	GLAND	A 350 Gr. LF2 Class-1	
5	2	SEAT RING	DEVLON V	*
4	1	STEM	A 182 Gr. F6a	
3	1	BALL	A 182 Gr. F6a	
2	2	BODY CONNECTOR	A 350 Gr. LF2 Class-1	* Dual confirming A105N
1	1	BODY	A 350 Gr. LF2 Class-1	* Dual confirming A105N

Rev.	Modification	Date	Nam.	Approv.
2	General update	15.03.2013	F.Z	
1	General update	27.02.2013	F.Z	
0	First issue	11.02.2013	F.Z	

Dimensions	Drawn	11.02.2013	F.Zanuy		JC Fábrica de válvulas, s.a. 08830 Sant Boi de Llobregat (Spain) Tel. + (34) 938 54 86 94 / Fax + (34) 938 54 86 95 e-mail: technical@jcvalves.com
m.m.	Checked	11.02.2013	J.Rubio		
Weight:	Appr. Eng.	11.02.2013	J.R.		
Substitutes:	Scale:	GENERAL DRAWING			Ref.:
Substitutes by:	1:1	Fig.6060 16" L.I.D.V. Class-600			PO 500758 BT Section A
					Drawing n°: 8042



This drawing is our property. It is strictly forbidden to use the drawing, to give it to third parties or to reproduce it totally or partially without our permission.