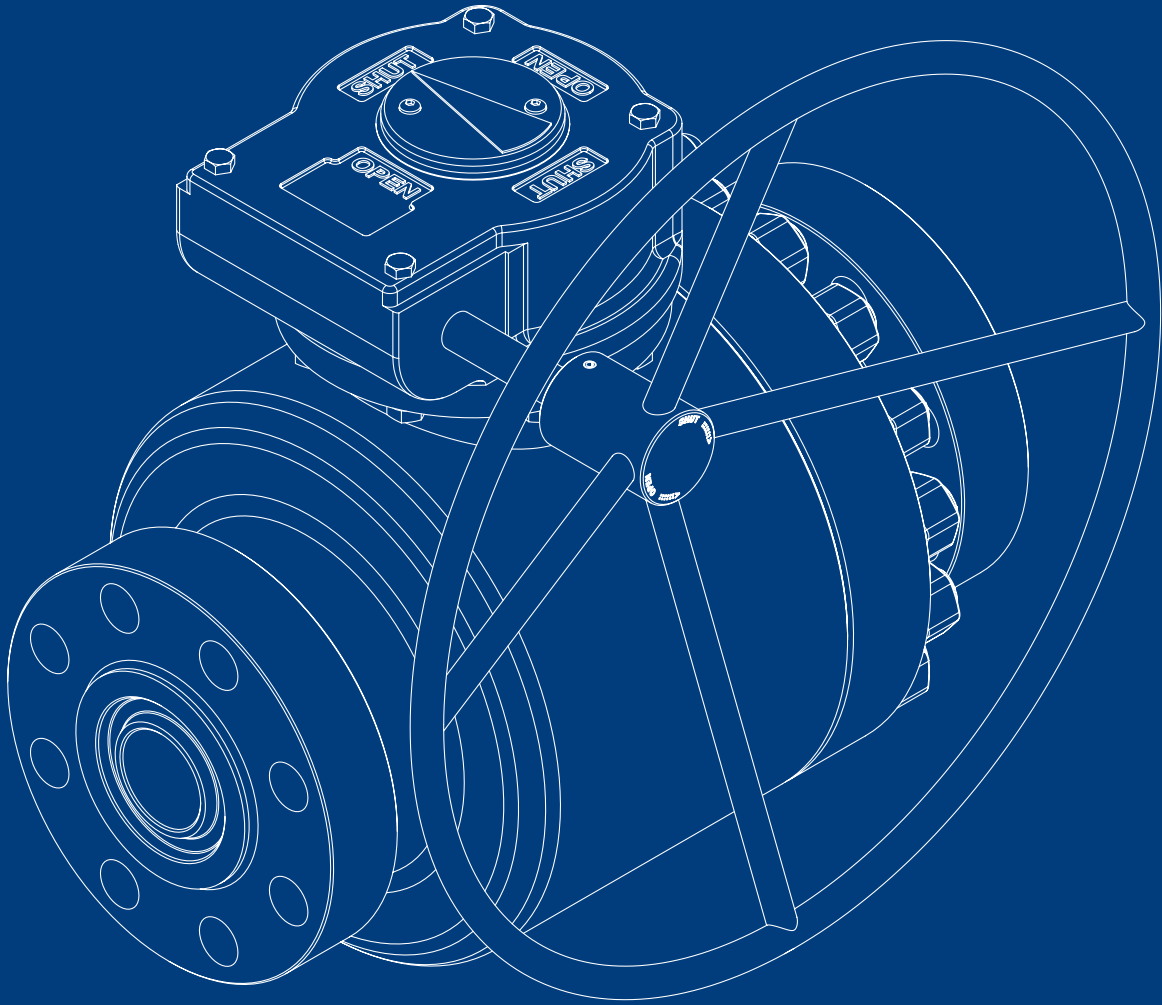
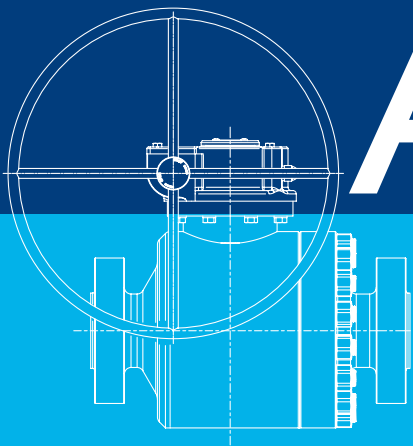


st STARLINE[®]
forged steel ball valves



STARLINE



API 6A

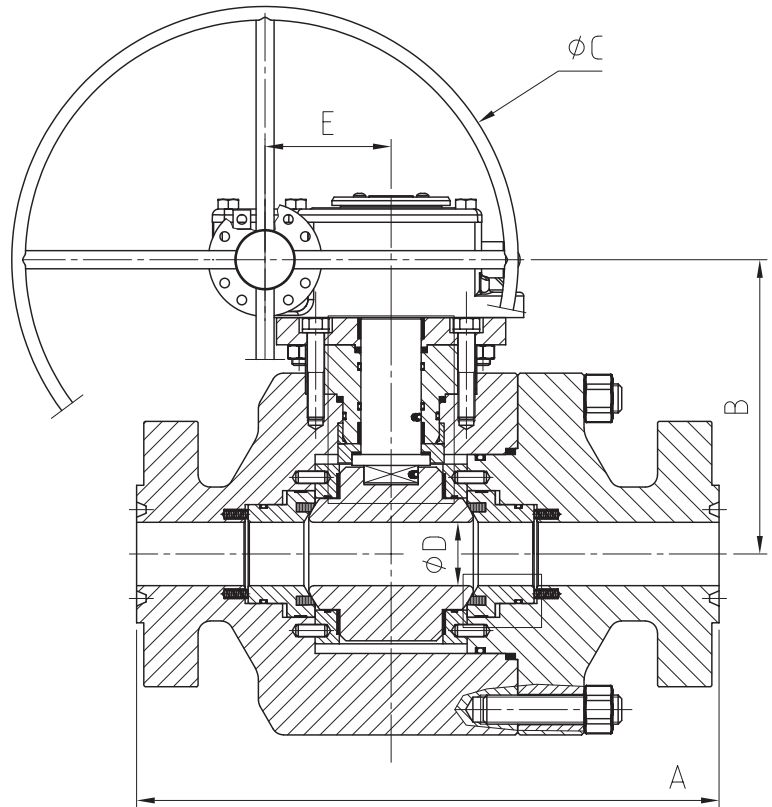
BALL VALVES

Starline manufactures a complete line of ball valves in according to API 6A.

They are available in an extensive range of designs, materials, sizes and pressure classes and are in full conformance with API and NACE specifications.

Starline uses only high-quality forged materials inspected & tested to International Standards and utilizes advanced manufacturing technology with special emphasis on safety, quality, and long service life of products.

The forging material can ensure the best rigidity and strength.



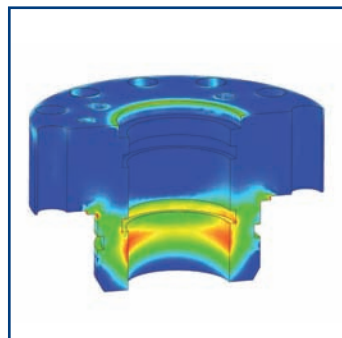
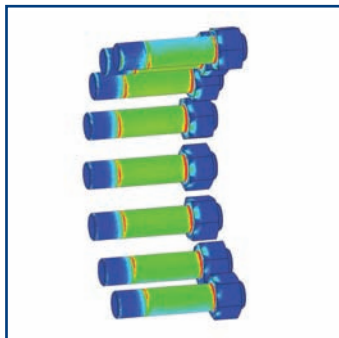
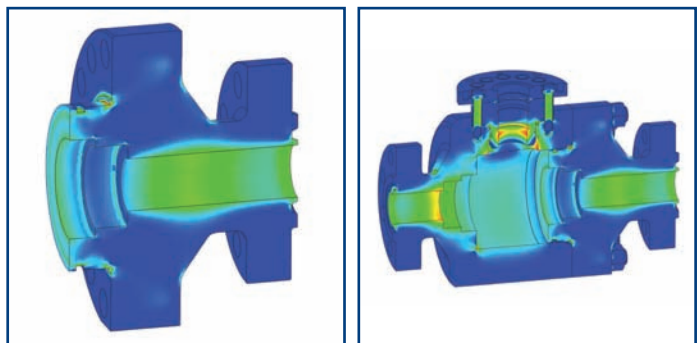
MAIN FEATURES

- Standard seat design is single piston effect. Double piston effect sealing barrier available on request.
- Anti-Blow Out stem design.
- Antistatic device.
- Valve designs are available to meet Pressure Product Requirement levels PSL-1, PSL-2, PSL-3 / PSL-3G and PSL-4.
- Modular double block and bleed valves (two ball and a needle system) according to API 6A are available on request.

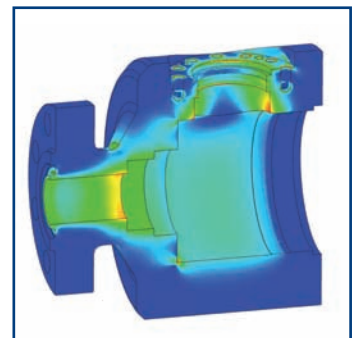
FEA

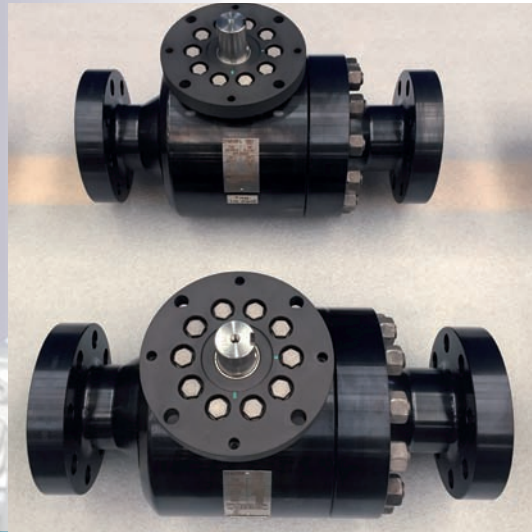
Starline uses the **FEA** for designing its **API 6A** ball valves.

Finite Element Analysis (FEA) is a very important step of the development phase and ensures the best possible performance requirements.



Valves operational problems, pressure/temperature related deformations and flow-related forces within a valve can be evaluated.





Starline performs in its facilities different non-destructive testing like ultrasonic, penetrant test, magnetic particles as defined by ASME B16.34.

Starline personnel performing NDT is trained and qualified to EN 473/ ASNT-SNT-TC-1A.

The API 6A designates 2 levels of testing under the categories PR 1, and PR 2 (PR meaning "Performance Requirement"), PR 2 requiring more testing than PR 1. Starline performs internally in its facilities both levels of performance testing.



Since its foundation on 1976 Starline has been focus only on production of Ball Valves in Forged Materials. After more than 40 Years the imprinting philosophy is still present and the base for the Company growth and success. Starting from the experience on the floating valves during the years, Starline has developed a wide and complete range of ball valves in different materials and executions introducing Trunnion Mounted design, Single and Double Block and Bleed, Metal to Metal,

Cryogenic and High temperature design. Today Starline with a production capacity of 250.000 valves/year, a complete size range and pressure ratings ½” to 36” – class 150- 2500lbs, API6A rate 3000-15000PSI in all the possible configurations and materials, is considered both by Customers and other Valve Manufacturers one of the Worldwide Market Leaders in Upstream Oil & Gas Applications which represent more than 70% of the final products destination.

PHILOSOPHY

Starline's philosophy is based on the achievement of the standardization of the highest quality requirements in each single product. All materials used are mandatory produced in Western Europe and all forging companies are located in Italy.

A product **FULLY MADE IN ITALY**



REFERENCES

- ADCO
- ADGAS
- ADMA-OPCO
- BP
- DSME
- ENI
- EXXON MOBIL
- GASCO
- GRT GAZ
- GAZPROM
- HYUNDAI (HHI)
- INPEX
- JGC CORPORATION
- KBR
- KNPC
- KOC
- NIOC
- NISOC
- NPCC
- PDO
- PETROBRAS
- PETROFAC
- PTSC
- PTTEP
- QATARGAS
- SAIPEM
- SAMSUNG (SHI)
- SHELL CHEVRON
- SNAMPROGETTI
- STATOIL
- TECHNIP
- TECNIMONT
- TOTAL E&P
- TOYO
- ZADCO



All the **Starline** API 6A ball valves are identified on proper name plate and on valve body as required by API 6A, MSS-SP 25, ASME B16.34. Nameplate indicates all information on rating, size, valve body and trim material, customer tags. Body marking includes material designations (as per ASTM) and heat code.

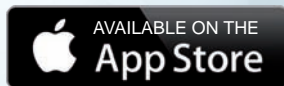


STANDARDS AND CERTIFICATIONS

- | | |
|----------------------------|-----------------------------------|
| ISO 9001: 2008 | API 6D |
| PED 2014/68/EU MOD.H CAT.3 | API 6DSS |
| ATEX 2014/34/EU | API 6A ISO10423 |
| SIL 3 | FIRESAFE API607-API 6FA- ISO10497 |
| CU-TR | BS 6364 |
| ASME B16.5 – ASME B16.10 | NACE MR0175 – NACE MR0103 |
| ASME B16.25 – ASME B16.34 | SHELL TAT |
| ASME B16.11 – ASME B1.20.1 | ISO 15848 |
| ASME VIII | |



Type in 'StarlineAR' and DOWNLOAD NOW





Starline S.p.A. - Società Unipersonale

Via dei Livelli di Sopra, 11 - 24060 Costa di Mezzate (BG) Italy
tel. +39 035 958041 / +39 035 958102 - fax +39 035 958413
www.starline.it - starline@starline.it

STARLINE BALL VALVES Ltd.

Unit 6, Interlink Way South
Bardon Hill, Coalville, Leicestershire, LE67 1PH
UK
Phone.: +44 (0) 1530 815818
Fax.: +44 (0) 1530 815819
starline@acvalvealliance.com
www.acvalvealliance.com

STARLINE FRANCE S.a.r.l.

7, Parc d'Activités de la Verdière
13880 Velaux
FRANCE
Phone : +33 (0) 442878400
Fax : +33 (0) 442878404
infos@star-line.fr
www.star-line.fr

STARLINE VALVES OY

Koivuhaantie, 2-4 C
01510 Vantaa
FINLAND
Phone: +358 (0) 98787711
Fax : +358 (0) 98787221
starline@starline.fi
www.starline.fi