

AIR TORQUE ACTUATORS AND CONTROL SYSTEMS

“manufactured in Italy”



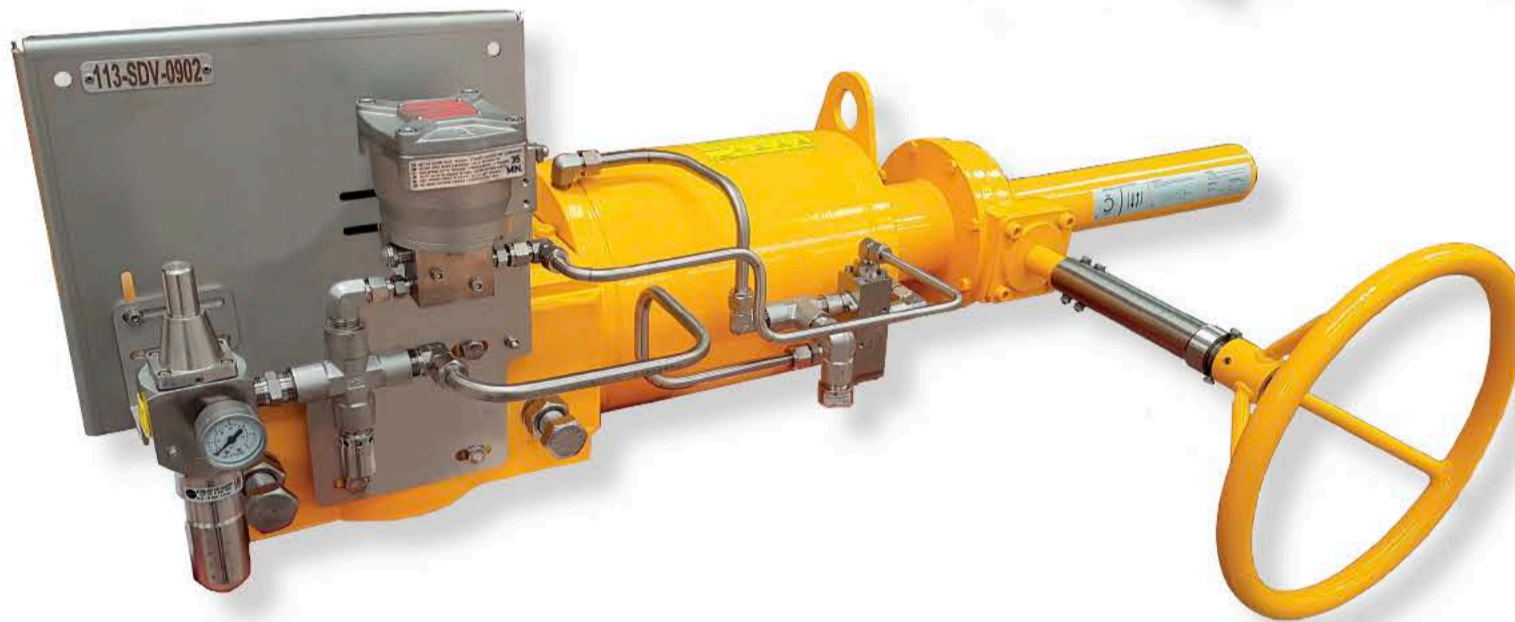
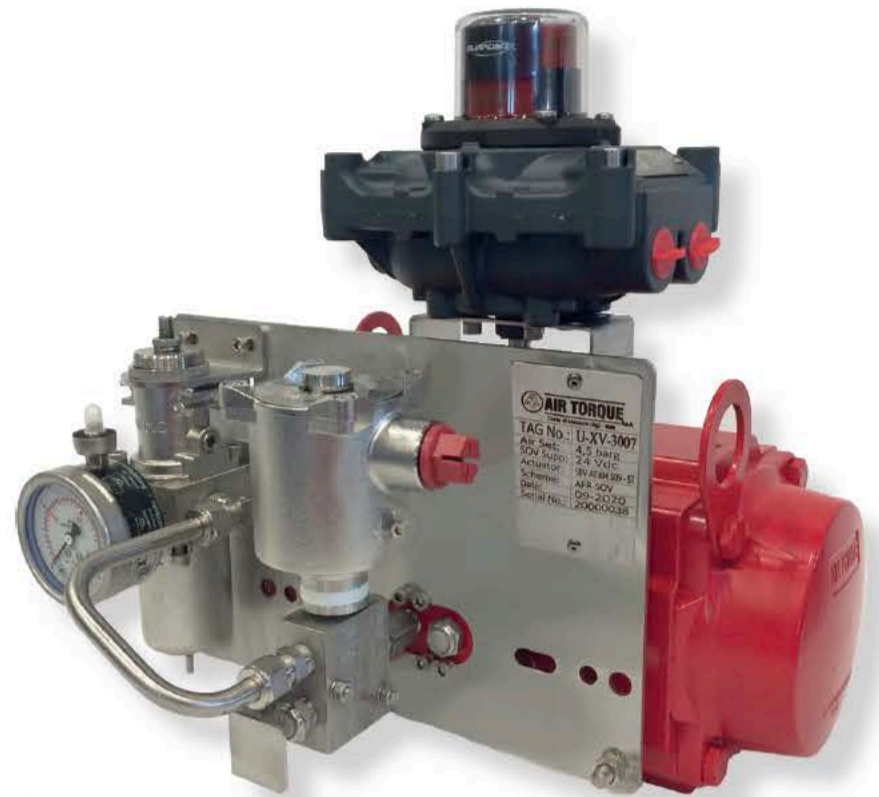
AIR TORQUE AUTOMATION

Air Torque is the worldwide leading manufacturer of pneumatic actuators, thanks to more than 30 years experience in actuators and valve automation since 1990.

Air Torque can combine its top quality actuators both rack and pinion and scotch yoke with excellent, factory tested control systems mounted on board of the actuators or free standing.

Basing on customers' specification, Air Torque can provide complete valve control units designed to meet the most stringent customer needs and stand the most challenging plants environments.

Air Torque offer for actuators is completed with a wide range of solutions for valve automation needs. With our actuators and control panels it's possible to fulfill the end users requirements for control, emergency shutdown and on/off valve applications.



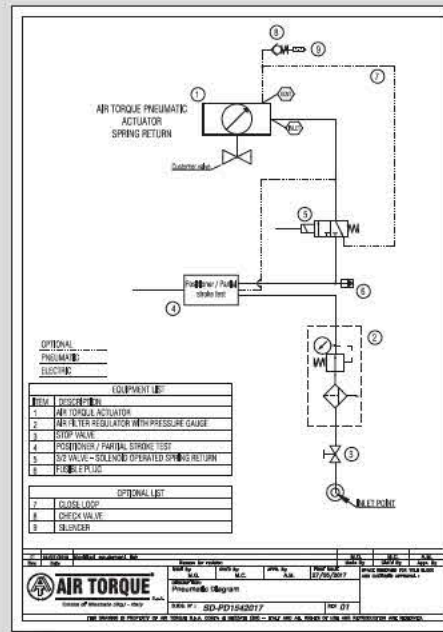
CUSTOMIZED SOLUTION

From customers specification to the real tested actuator with control unit.

The table contains the following sections:

- CONTROL VALVES**
- MODULES**
- INSTRUMENT DATA SHEET**
- GENERAL DATA**
- ACTUATOR DATA**
- CONTROL VALVE DATA**
- MODULES DATA**
- OPTIONAL EQUIPMENT**
- OPTIONAL LIST**

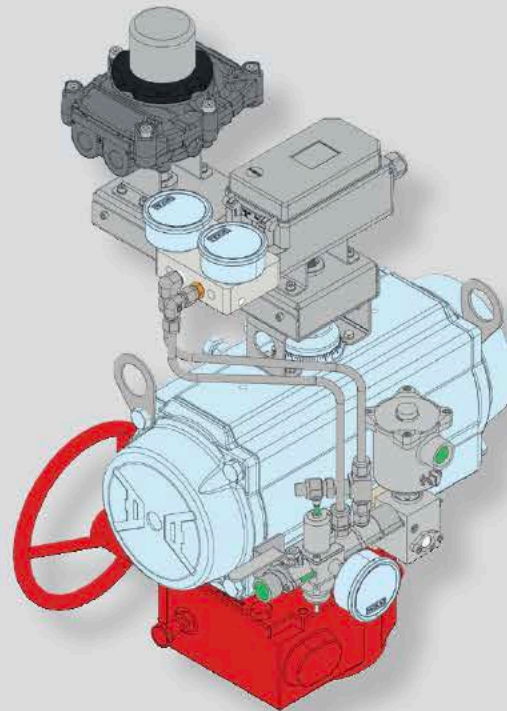
End user specification / Data sheet



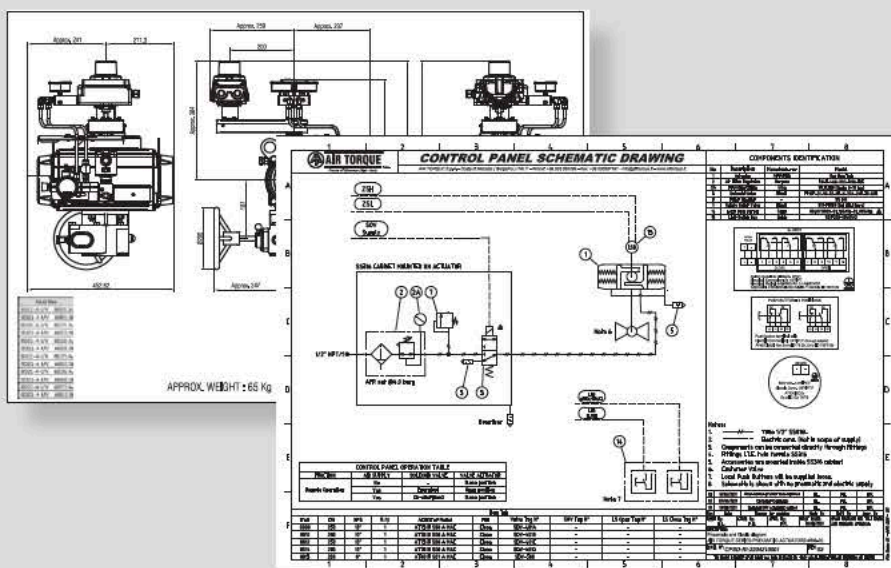
Control system architecture



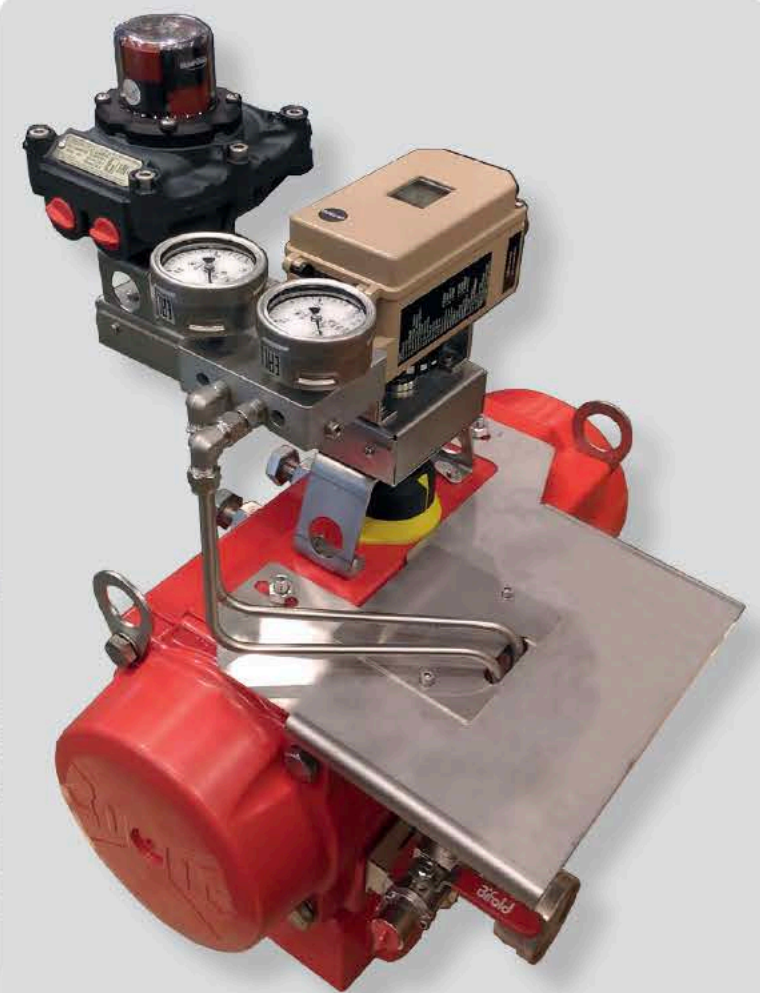
Sizing



Design



Scope of supply definition



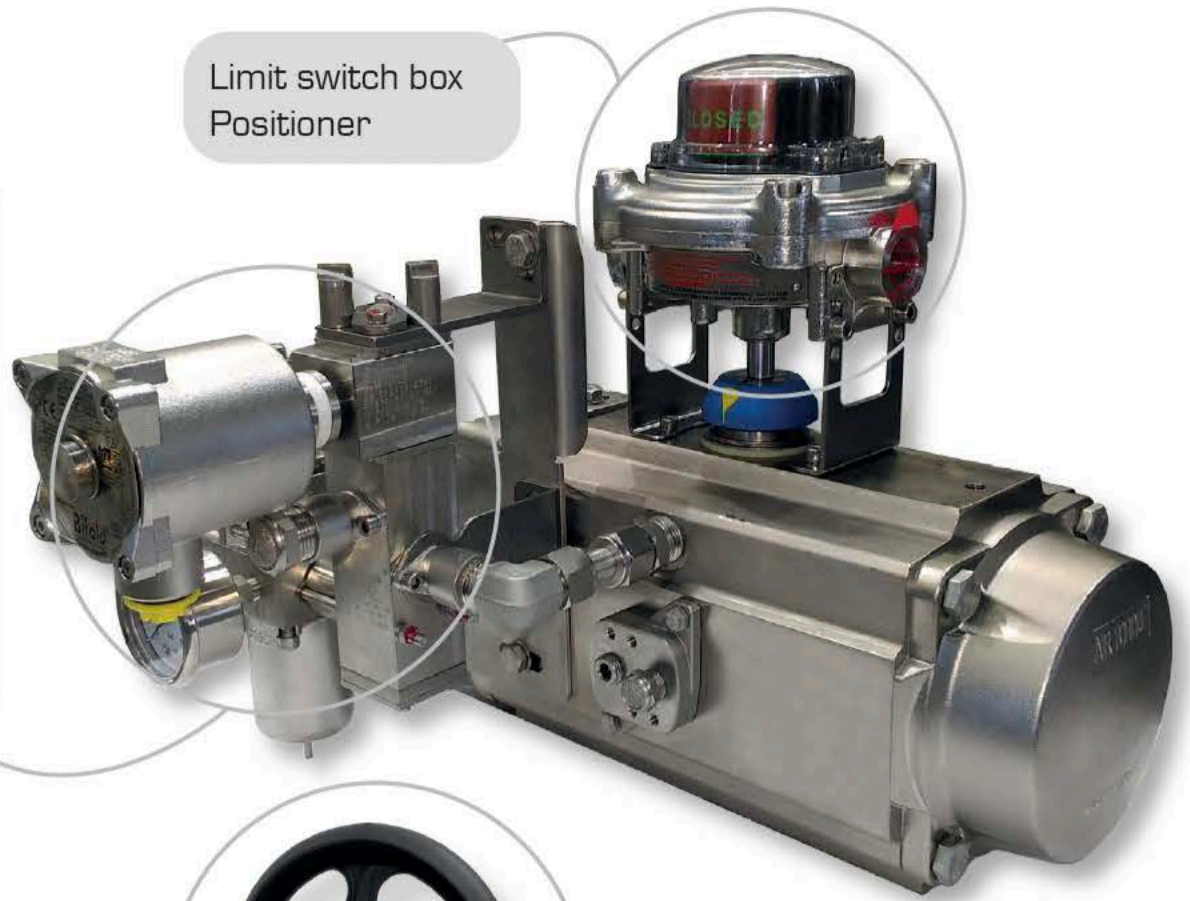
Tested product

AUTOMATION COMPONENTS

Control systems with specified End Users accessories brands or best accessories selected by Air Torque

- Filter regulator
- Check valves
- Solenoid and pilot valves
- Quick exhaust
- Flow regulator
- Booster
- Pressure gauge certified
- Fusibile plug
- Certified pressure gauge
- Safety relief valve
- ...

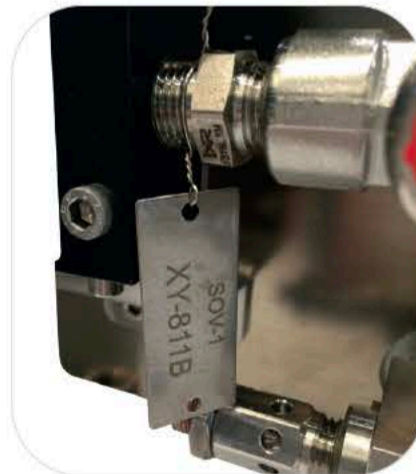
Limit switch box
Positioner



Manual override



CARE FOR DETAILS



VALVE LINKAGE CAPABILITY



PROOVED PERFORMANCE

Air Torque has a dedicated Engineering staff with extended knowledge and experience of both automation and controls, as well as O&G applications and process industries.

Products are supplied to customers after **testing** in the Air Torque automation dedicated production facility.

Depending on the customer requests the actuators can be delivered with complete Factory Acceptance Test (**F.A.T.**) report based on the Air Torque standard or customer specification.

TORQUE PERFORMANCE TEST

Customer: 7
Purchase order n°: CPS-23833
Item n°: 2
Description actuator model: Pneumatic Actuator PT Series N Spring Return R PT350 S.L.L. F07 of 10 12L

Cartridge n°: 62 15 08
Acknowledgement n°: PT350L S.L.L.
Product Code: PT Series N Spring Return R PT350 S.L.L. F07 of 10 12L

Date: 01/02/2018
Page: 1/2
Site of member: /

Delay: 10"
Torque Low: 85 Nm
Torque High: 105 Nm

POSITION (degrees)	OPENING CCW Rotation (Nm)	CLOSING CW Rotation (Nm)	PRESSURE (BAR)
0	108	92	0
5	111	105	0
10	114	112	0
15	115	120	0
20	114	128	0
25	114	134	0
30	114	147	0
35	114		0
40	114		0
45	114		0
50	114		0
55	114		0
60	114		0

Test Result: Test Passed

TORQUE DIAGRAM

Graph showing Opening CCW Rotation (Nm) and Closing CW Rotation (Nm) vs Position (degrees). The graph shows two curves: a blue curve for Opening CCW Rotation and an orange curve for Closing CW Rotation. Both curves show an increasing trend as the position increases from 0 to 60 degrees.

FACTORY ACCEPTANCE TEST CERTIFICATE

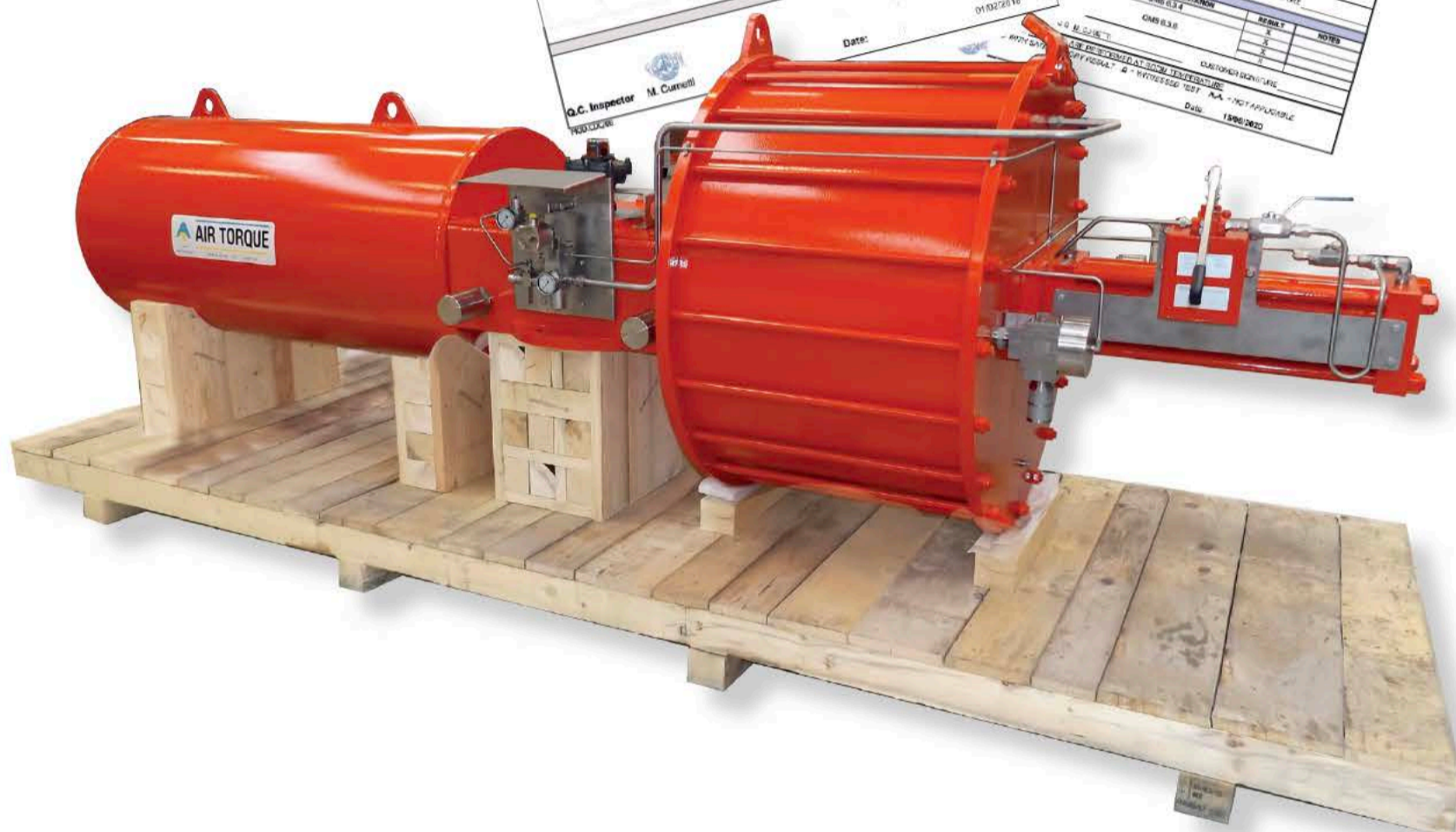
Customer: 7
Purchase order n°: CPS-23833
Item n°: 2
Description actuator model: Pneumatic Actuator PT Series N Spring Return R PT350 S.L.L. F07 of 10 12L

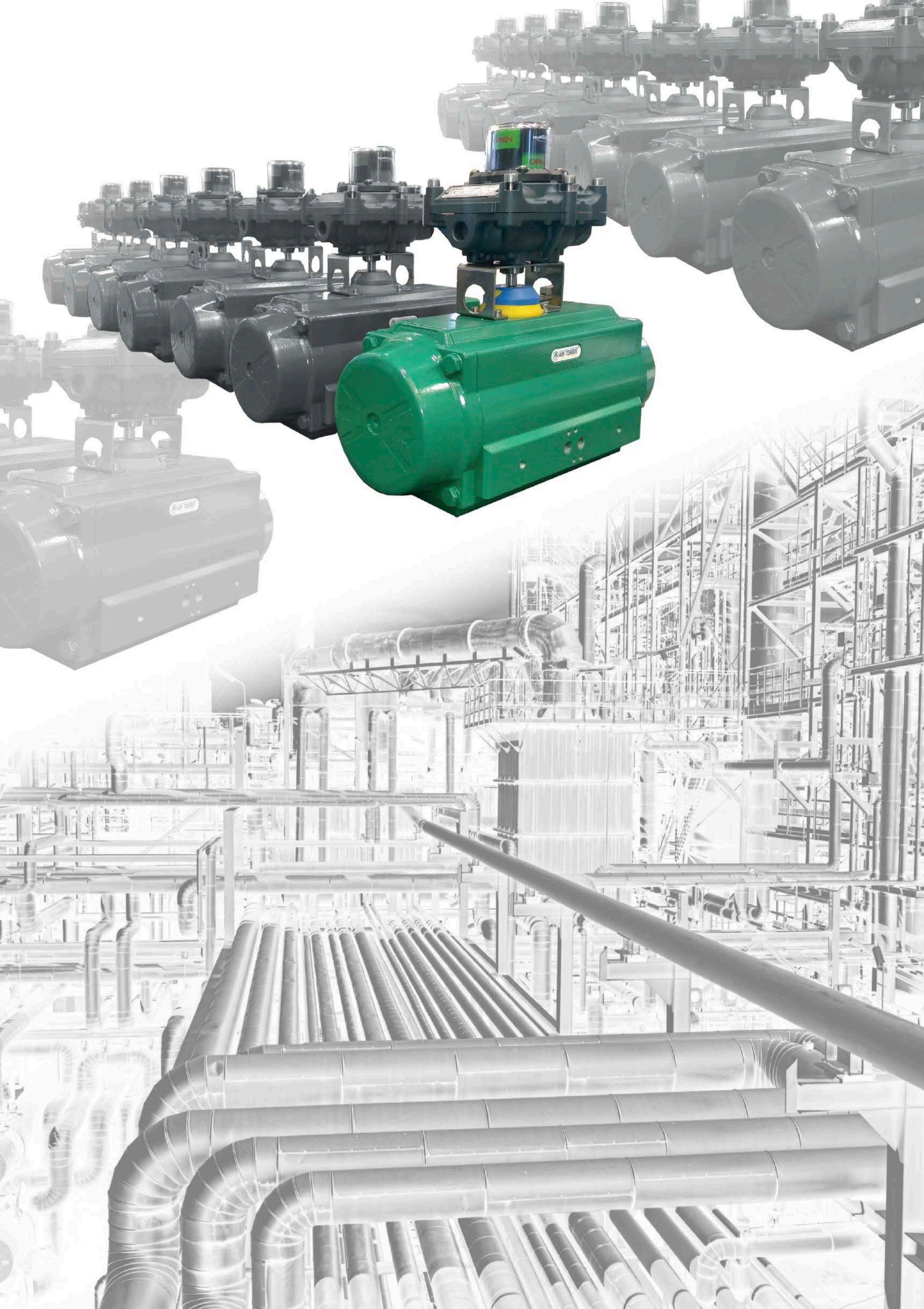
Cartridge n°: 62 15 08
Acknowledgement n°: PT350L S.L.L.
Product Code: PT Series N Spring Return R PT350 S.L.L. F07 of 10 12L

Date: 01/02/2018
Page: 1/2
Site of member: /

Delay: 10"
Torque Low: 85 Nm
Torque High: 105 Nm

Q.C. Inspector: M. Curulli





HEAD OFFICE AND WORKS



AIR TORQUE S.P.A.
Head Offices: Via dei Livelli di Sopra, 11
Factory: Via dei Livelli di Sopra, 8
24060 Costa di Mezzate (BG) ITALY
Tel. +39 035 682299 - Fax +39 035 687791
info@airtorque.it - www.airtorque.it