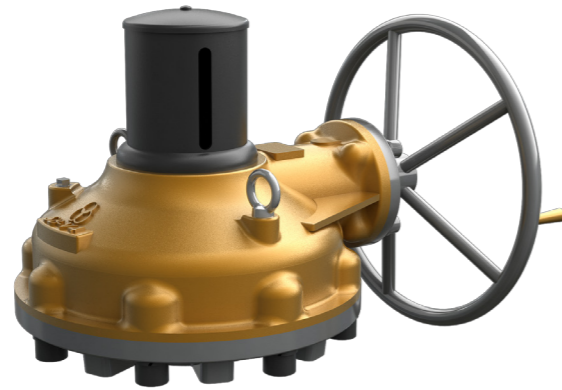


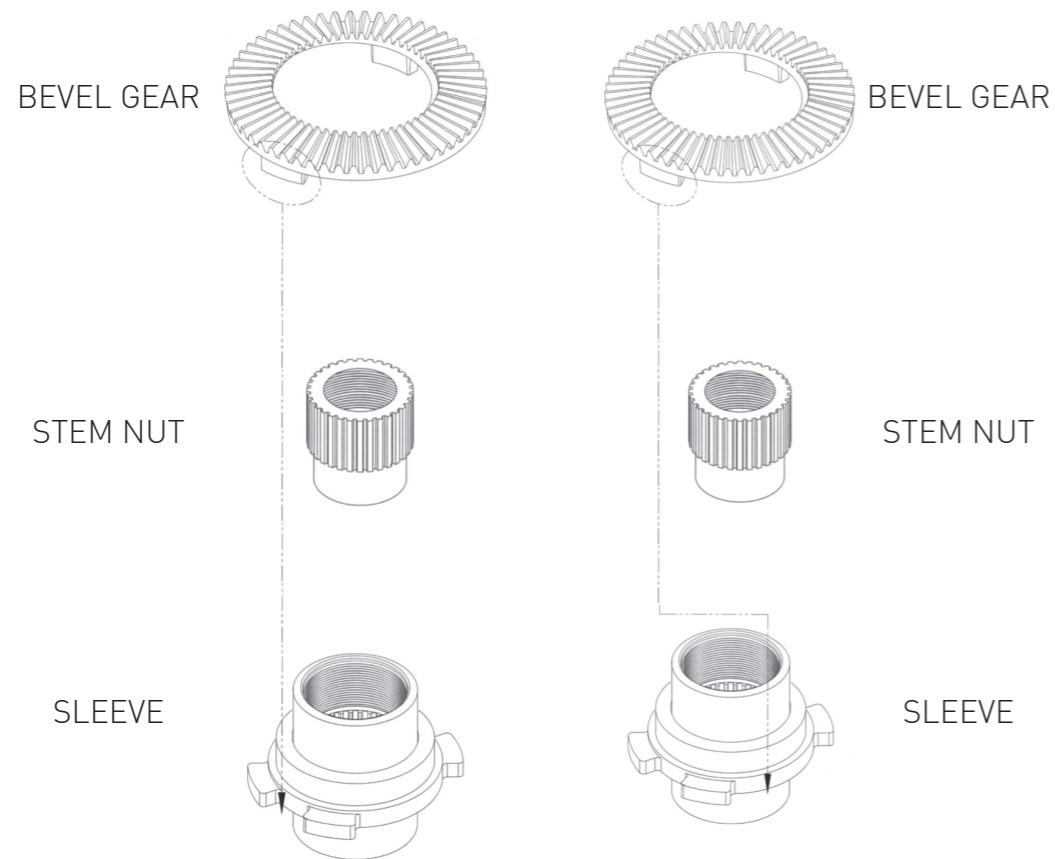
BEVEL GEAR ACTUATORS

The SB Series Bevel Gears have the ability to be assembled with “Lost-Motion-[Hammer blow]” or with “No-Lost Motion” output drive arrangement



MOV TYPE

HANDLE TYPE



Fix Type

Hammer Blow Type

No-Lost Motion

This Type eliminates the gap in the lug drive between the Bevel Gear and Drive Sleeve. It is the preferred method for Electric Actuators having positioning control capability.

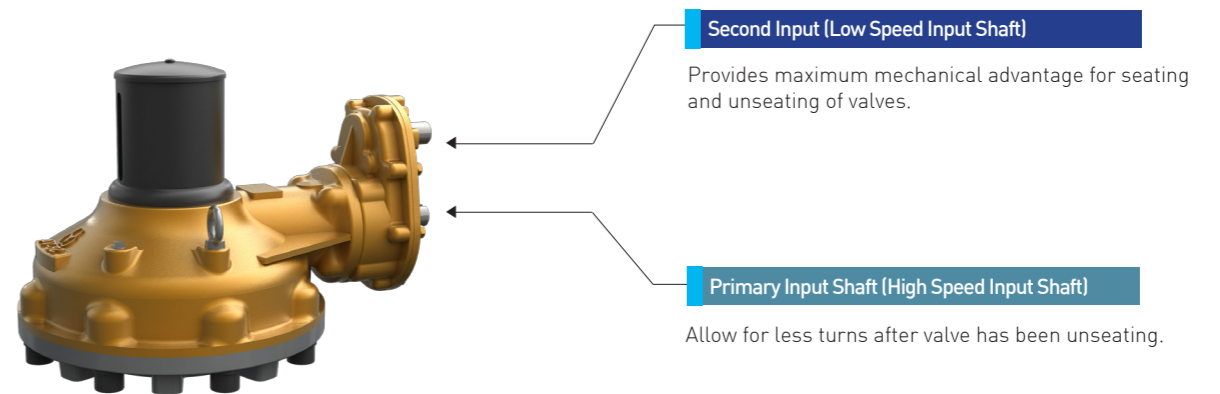
Lost Motion (Hammer Blow)

This type eliminates the gap in the lug drive between the Bevel Gear and Drive Sleeve Enabling a momentary impact. It is the preferred method for all Manual operation and for Electric Actuators of Wedge Gates and Globe Valves

Chainwheel Type

Twin Shaft Gear Actuators Type

There are two input shafts in the below support box type. One shaft is for high speed and the other shaft is for low speed.



The below input shaft type is used to require Gear Actuators which is operated by 2 spindles. As option, there are motorized type, dial type and manual type.

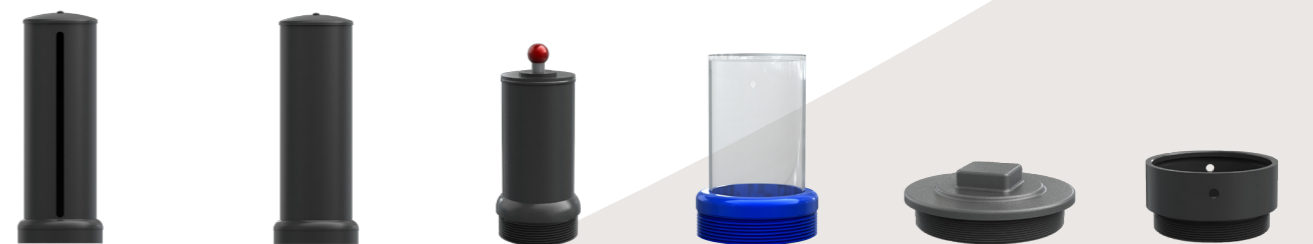
Manual Both Ends

Manual / Motorised



Valve Spindle Cover Tubes

Stem cover for valve can be offered as A53, SUS304, polycarbonate etc. Stem cover and indicator sets can be made by several different types. The length of stem cover will be changed as per customer's request.



Rising Indicators Type No Hole Stem cover Type Gauge Type Polycarbonate Type (Transparent) Stem Cap Type PF Adapter Type

The Other Used Options in SAMBO

Sambo's standard input shaft rotation is based on a clockwise input resulting in a clockwise output [Clockwise In = Clockwise Out]. The reverse rotation can be operated. As per customer's request, it can be made by such types as buried, submersible, marine, radiation and high & low temperature service etc. Also, Gear ratio and specification of flange can be changed.