

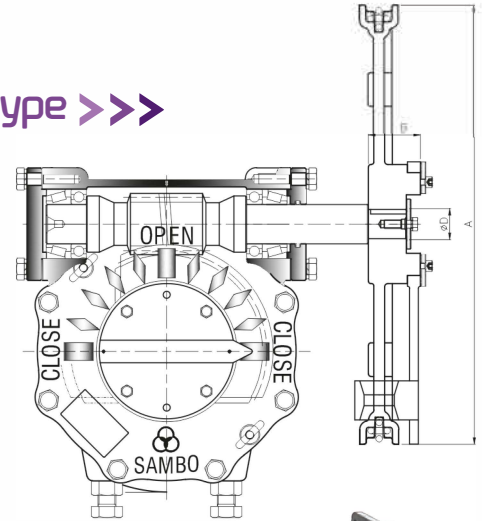
# Chain Wheel Type

## WORM Standard >>>

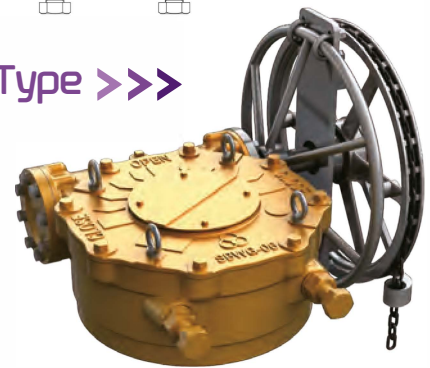
UNIT : mm

SIZE MODEL	A	B	ØD & KEY
CH-200	200	43	Ø16 (6X6) Ø21 (6X6)
CH-250	250		
CH-300	300	43,5	Ø26 (8X7) Ø32 (10X8)
CH-350	350		
CH-400	400	50	Ø38 (12X8)
CH-450	450		
CH-500	500		
CH-550	550		
CH-600	600	51,5	Ø38 (12X8) Ø50 (16X10)
CH-700	700		
CH-800	800	53	

## Gear Type >>>



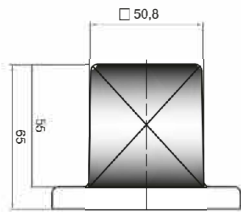
## Hammer Type >>>



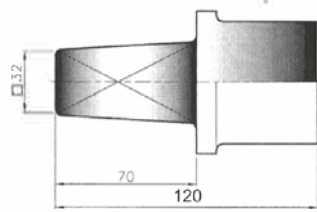
### Chainwheel has 2 types

- First, hammer type which is joined with handwheel.
- Second, gear type which is adhered to gear directly.
- material : sprocket rim (FCD-450), guide arm (FCD-450), chain (steel+zn)

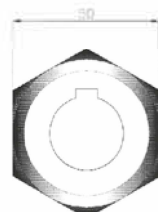
## Square Adapter >>>



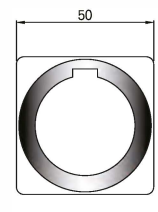
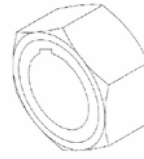
2" Square Nut Adapter



32 Square Nut Adapter

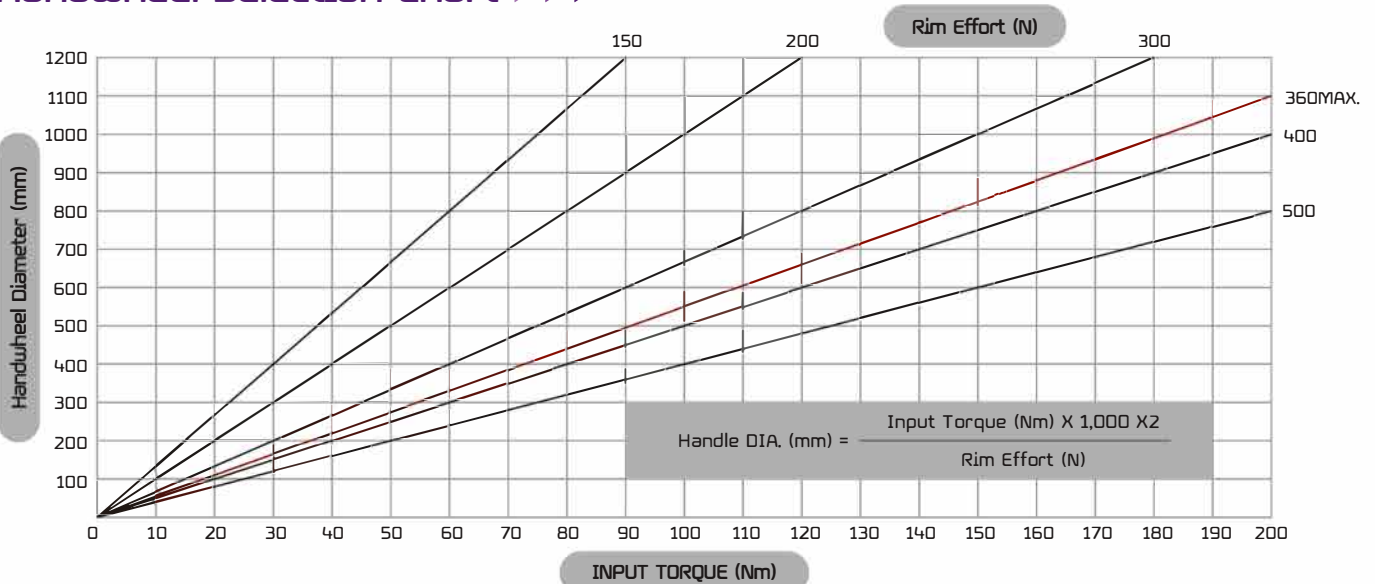


Hexagon Adapter



2" Square Nut

## Handwheel Selection Chart >>>



Size and component specification in this catalogue are subject to change without prior notice for quality improvement. \* Mark has been changed and updated.