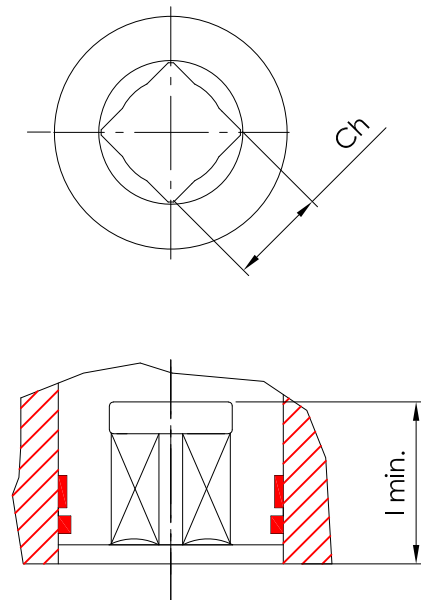




## CONNECTIONS AVAILABLE FOR CARBON STEEL DRIVE SHAFT FOR 4ThGU/PTU PNEUMATIC ACTUATORS SERIES SUITABLE FOR A-B-D-P-V-X PROTECTION LEVEL.

### SINGLE SQUARE

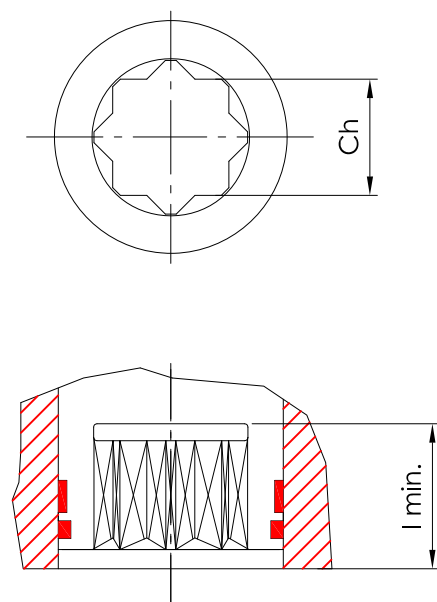


Note:  
 In case of different connections, please contact our offices

ACTUATOR MODEL	SINGLE SQUARE DIMENSIONS Ch x l min.					
AT045U						
AT051U	9x11	9,1x13,5*	11x13	10x12 *		
AT101U	9x11	10x16 *	11x19 *	14x16		
AT201U	10x34 *	11x19*	14x19	17x19		
AT251U	11x19 *	12x34 *	14x19	16x34 *	17x20	19x21 *
AT301U	11x19 *	14x19*	16x34 *	17x20	19x21 *	22x25
AT351U	14x19	16x34 *	22x25	24x25 *		
AT401U	14x19 *	16x34 *	17x25*	22x25	24x45 *	27x29
AT451U	16x34 *	17x25 *	22x35	24x45 *	27x30	
AT501U	16x34 *	22x40	27x30			
AT551U	22x40	36x40				
AT601U	22x40	24x45 *	27x40	36x40		
AT651U	22x40 *	24x45 *	27x40	30x45 *	32x37 *	46x50
AT701U	27x40	46x50				
AT751U	27x70 *	36x41 *	38x46 *	46x52	55x60	
AT801U	36x40 *	55x61				
AT1001U	46x52 *	75x81				

\* SPECIAL CONNECTION: PRICE AVAILABLE ON SPECIFIC REQUEST

### DOUBLE SQUARE



Note:  
 In case of different connections, please contact our offices

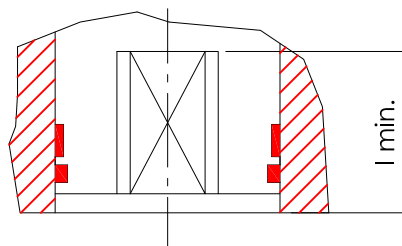
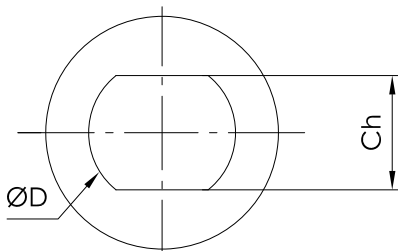
ACTUATOR MODEL	DOUBLE SQUARE DIMENSIONS Ch x l min.			
AT045U	9x11	11x12		
AT051U	9x11 *	11x13		
AT101U	11x19	14x16		
AT201U	11x19 *	14x19	17x19	
AT251U	14x18 *	17x20		
AT301U	14x19 *	17x25	22x25	
AT351U	17x25	22x32		
AT401U	17x25 *	22x35	27x29	
AT451U	22x35 *	27x40		
AT501U	27x40			
AT551U	27x40	30x41 *	33x41 *	36x40
AT601U	27x40	30x41 *	36x40	
AT651U	36x40	46x64		
AT701U	36x40	46x52	50x66 *	
AT751U	46x52	55x61		
AT801U	46x52	55x61	60x65 *	
AT1001U	40x 60 *	55x60	75x81	

\* SPECIAL CONNECTION: PRICE AVAILABLE ON SPECIFIC REQUEST



**CONNECTIONS AVAILABLE FOR CARBON STEEL DRIVE SHAFT FOR 4ThGU/PTU PNEUMATIC ACTUATORS SERIES SUITABLE FOR A-B-D-P-V-X PROTECTION LEVEL.**

**FLAT HEAD**



ACTUATOR MODEL	FLAT HEAD DIMENSIONS Ch x D x l min.					
AT101U	8x12x16 *	10x14x17 *	11x14x19 *			
AT201U	10x16x19 *	10,2x14x35*	11x14x19 *	11x14x24*	14x10,2x35 *	14x18x25 *
AT251U	10,2x14x36 *	11x14x19 *	13x19,1x37 *	14x18x31 *	17x22,2x23 *	
AT301U	11x14x19 *	13x19,1x37 *	14x18x31 *	14x22x25 *	17x22,2x30 *	17x22x33 *
AT351U	17x22,2x30 *	19x25x36 *	22,1x30x57 *			
AT401U	17x22,2x30 *		20x30,1x26 *	20x31x25 *	22x28,2x40 *	22,1x30x57 *
AT451U	22x28x41 *	22,1x30x57 *				
AT501U	22x28x41 *	22,1x30x57 *	28x40x31 *	28x42x30 *		
AT551U	22x28x41 *	22,1x30x57 *				
AT601U	22x28x41 *	22,1x30x41 *				
AT651U	22,1x30x57 *	36x48,2x51 *				

Note:  
 In case of different connections, please contact our offices

\* **SPECIAL CONNECTION: PRICE AVAILABLE ON SPECIFIC REQUEST**



**AIR TORQUE**

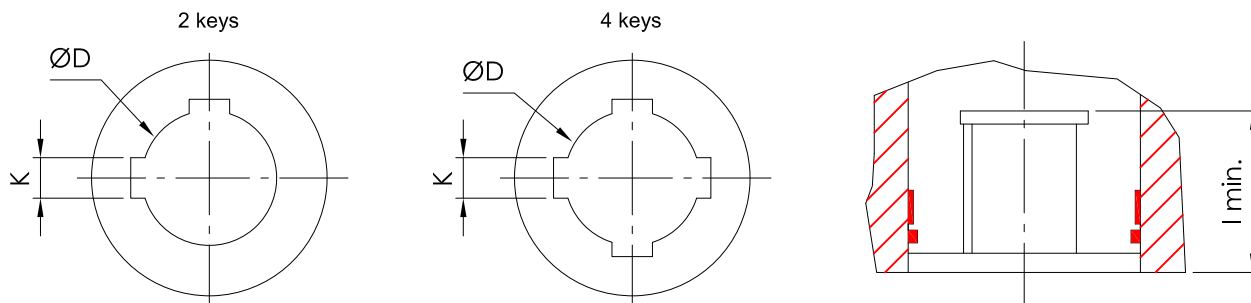
AIR TORQUE S.p.A.  
 via dei Livelli di Sopra, N° 8/11  
 24060 Costa di Mezzate (Bg) Italy  
 Tel.: +39 035 682299  
 Fax: +39 035 687791  
 E-mail: info@airtorque.it

T.D.S. n° U00201E

Issued on: 07/25 - Page 3/3

**CONNECTIONS AVAILABLE FOR CARBON STEEL DRIVE SHAFT FOR 4ThGU/PTU PNEUMATIC ACTUATORS SERIES SUITABLE FOR A-B-D-P-V-X PROTECTION LEVEL.**

**KEY**



ACTUATOR MODEL						
AT201U	AT251U	AT301U	AT351U	AT401U	AT451U	AT501U
15x4,763x35 *	10x3x26 *	15x4,763x29*	19x6x45 *	19x6x46 *	18x6x46 *	18x6x46 * (x4)
15x5x18 *	12x4x31 *	20x4,763x40 *	25x6,35x50 *	20x4,763x40 *	20x6x46 *	22x6x46 * (x2/x4)
	15x4,763x30 *		25x8x25 *	20x6x40 *	22x6x46 *	25x6,35x50 *
	15x5x31 *			25x6,35x50 *	25x6,35x49*	25x8x51 *
				25x8x50 *		30x8x61 *
						35x9,525x70 *
ACTUATOR MODEL						
AT551U	AT601U	AT651U	AT701U	AT751U	AT801U	AT1001U
18x6x46 * (x2/x4)	23x8x61 * (x4)	25x8x56 * (x4)		33x10x81 * (x4)	40x12x110 * (x4)	40x12x111 *
18x6x60*	24x8x56 * (x4)	28x8x61 * (x2/x4)	28X10X66 *	35x9,525x69*	45x14x65	45x14x80 *
22x6x46 *		30x8x61 *	35x10x80* (x4)	40x12x81 *	48x14x80 *	48x14x115 *
28x8x60 *	35x9,525x70 *	32x8x56 *	36x10x70 *	42x10x71 *	50x12x81 *	50x14x80 *
30x8x60 *	35x10x65*	32X12X56 * (x4)	39x12x80* (x4)	42x12x80 *	50x14x110 * (x4)	50x16x116 *
35x9,525x70 *	36x10x70 * (x2/x4)	33x10x81 * (x4)	40x12x81 * (x4)	45x14x80	55x16x81 *	58x16x115 *
36,2x10,1x50*	36,2x10,1x51 *	35x9,525x70 *	45x14x65	45x14x85*	55,2x16,1x81 *	60x18x111 *
40x12x50 *	37,9x10,1x51 *	35x10x62 *	45,2x12,1x71 *	45,2x14,1x80 *	58x16x81 *	65x18x115 *
	40x12x50 *	36x10x70 * (x2/x4)	45,2x14,1x81 *	48x14x80 * (x2/x4)	60x18x80	70x20x135
	42x12x71 * (x4)	36x12x81 *	48x10x80* (x4)	50x12x80 *	60x18x80* (x4)	80x22x135
	45x14x65	36,2x10,1x50*	48x14x80 *	50x14x95 *	60x18x111 *	85x22x145 *
		38X10X81 *	50x12x120 *	50,2x12x81 *	65x18x80	
		38X12X81 * (x4)	50x14x95 *	55,2x16,1x81 *	70x20x80	
		40x12x70 *	50x16x96 *	58x16x116 * (x4)	72x20x80	
		42x10x71 *		60x18x100* (x4)	72x20x110* (x4)	
		42x12x71 * (x2/x4)	55x12,7x100 *	60x18x145		
		45x14x65	58x16x81 *	63,5x15,9x145 *		
		45,2x12,1x70*	60x18x81 *	65x18x80 *		
		45,2x14,1x81 *	60x18x90* (x2/x4)	65x18x115* (x4)		
		48x10x80* (x4)	65x18x80	65,2x18,1x116 *		
		48x14x80 * (x2/x4)		70x20x130		
		50x12x120 *				
		50x14x81 *				

KEY DIMENSIONS D x K x l min.

Note:  
 In case of different connections, please contact our offices

\* SPECIAL CONNECTION: PRICE AVAILABLE ON SPECIFIC REQUEST