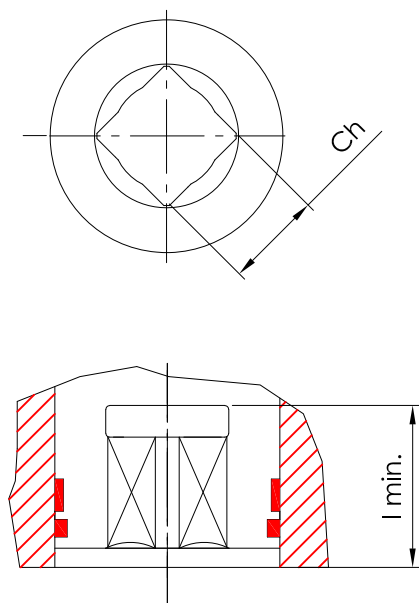


CONNECTIONS AVAILABLE FOR **STAINLESS STEEL DRIVE SHAFT FOR 4ThGU/PTU** PNEUMATIC ACTUATORS SERIES SUITABLE FOR **E-F-X-V PROTECTION LEVEL**

SINGLE SQUARE

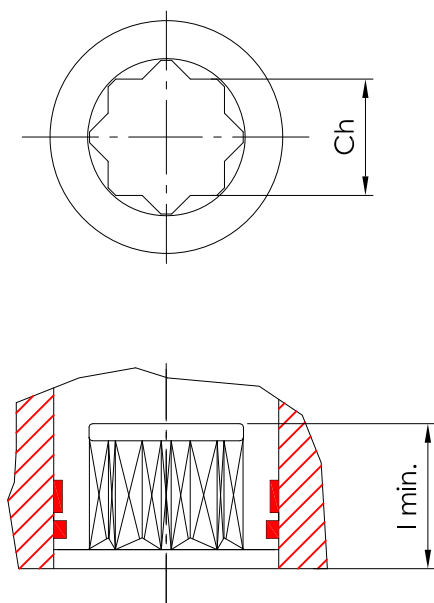


| ACTUATOR MODEL | SINGLE SQUARE DIMENSIONS Ch x l min. | | | |
|----------------|--------------------------------------|---------|---------|---------|
| AT101U | 9x11 * | 10x16 * | 12x15 * | |
| AT201U | 11x19 * | | | |
| AT251U | 11x20 * | 14x19 * | 16x33 * | |
| AT301U | 11x19 * | 14x19 * | 16x34 * | |
| AT351U | 14x19 * | 17x25 * | 24x25 * | |
| AT401U | 14x18 * | 16x34 * | 17x25 * | 24x45 * |
| AT451U | 17x25 * | 22x35 * | 24x45 * | |
| AT501U | 22x40 * | 27x41 * | | |
| AT551U | 17x25 * | 22x40 * | | |
| AT601U | 22x41 * | 24x45 * | | |
| AT651U | 22x41 * | 27x41 * | 32x37 * | 36x40 * |
| AT701U | 27x41 * | | | |

Note:
In case of different connections, please contact our offices

* **SPECIAL CONNECTION:** PRICE AVAILABLE ON SPECIFIC REQUEST

DOUBLE SQUARE



| ACTUATOR MODEL | DOUBLE SQUARE DIMENSIONS Ch x l min. | | | |
|----------------|--------------------------------------|---------|---------|-------|
| AT051U | 9x11 | 11x13 | | |
| AT101U | 11x19 | 12x15 * | 14x16 | |
| AT201U | 12x16 * | 14x19 | 17x19 | |
| AT251U | 17x20 | 19x21 * | | |
| AT301U | 17x25 | 19x22 * | 22x25 | |
| AT351U | 17x25 | 22x25 | | |
| AT401U | 22x35 | 27x29 | | |
| AT451U | 22x35 | 27x30 | | |
| AT501U | 27x40 | | | |
| AT551U | 22x41 * | 27x35 | 36x40 | |
| AT601U | 27x40 | 30x41 * | 32x41 * | 36x40 |
| AT651U | 36x40 | 46x52 | | |
| AT701U | 36x40 | 46x52 | | |
| AT751U | 46x52 | 55x61 | | |
| AT801U | 46x52 | 55x61 | | |
| AT1001U | 55x60 | 75x81 | | |

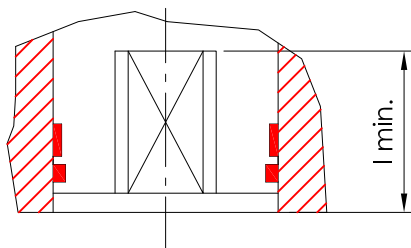
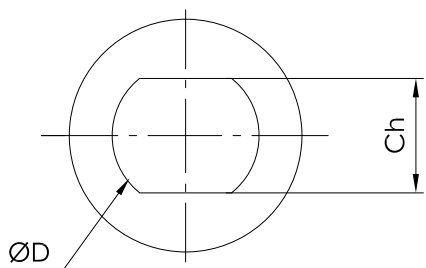
Note:
In case of different connections, please contact our offices

* **SPECIAL CONNECTION:** PRICE AVAILABLE ON SPECIFIC REQUEST



CONNECTIONS AVAILABLE FOR STAINLESS STEEL DRIVE SHAFT FOR 4ThGU/PTU PNEUMATIC ACTUATORS SERIES SUITABLE FOR E-F-X-V PROTECTION LEVEL

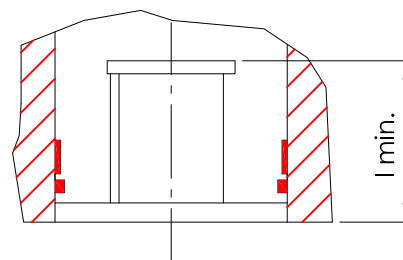
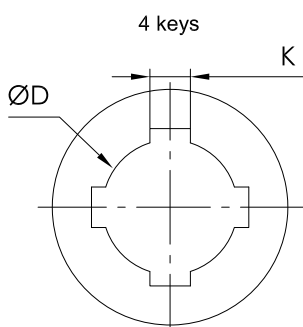
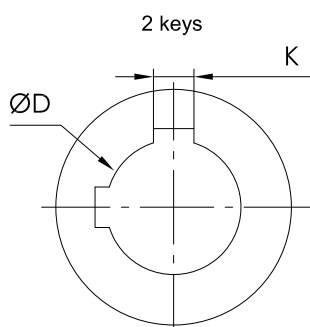
FLAT HEAD



| ACTUATOR MODEL | FLAT HEAD DIMENSIONS Ch x D x l min. | |
|----------------|--------------------------------------|--------------|
| AT251U | | |
| AT351U | | |
| AT401U | | 22,1x30x57 * |
| AT501U | 13x19, 1x38 * | 22,1x30x57 * |
| AT551U | 22,1x30x57 * | |
| AT601U | 22,1x30x57 * | |
| AT651U | 22,1x30x57 * | |

Note: In case of different connections, please contact our offices * SPECIAL CONNECTION: PRICE AVAILABLE ON SPECIFIC REQUEST

KEY



| ACTUATOR MODEL | KEY DIMENSIONS D x K x l min. | | | | | | | | | |
|----------------|-------------------------------|----------------|------------------|-------------|-------------|------------|------------|------------|-----------------|--|
| AT301U | 14,4x4x21 * | 19x6x38 * | | | | | | | | |
| AT401U | 20x6x46 * | 20x6x50 * (x4) | | | | | | | | |
| AT451U | | 24x6x46 * | | | | | | | | |
| AT551U | 25x8x60* (x4) | 28x8x61 * | 30x8x60* (x4) | | | | | | | |
| AT601U | 20x6x41 * | 23x8x61 * (x4) | 24x8x31 * (x4) | | 35x10x66 * | 36x10x70 * | 40x12x51 * | | | |
| AT651U | 28x8x60 * | | | 40x12x71 * | 42x10x70 * | 42x12x71 * | 45x14x64 * | 48x14x81 * | 50x14x100* (x4) | |
| AT701U | 30x8x61 * (x4) | 40x12x81 * | 45x14x64 * | 48x14x80 * | 50x12x121 * | 58x16x80 * | | | | |
| AT751U | 42x10x80 * | 45x14x81 * | 48x14x81 * | 50x12x121 * | | | | | | |
| AT801U | 40x12x70* | 48x14x80 * | | | | | | | | |
| AT1001U | 48x14x116 * | 58x16x115* | 75x20x116 * (x4) | | | | | | | |

Note: In case of different connections, please contact our offices * SPECIAL CONNECTION: PRICE AVAILABLE ON SPECIFIC REQUEST